

**SHEET NOTES.**

**TRASH ROUTE / STAGING PLAN, LEVEL 1.**

1. STAFF SHALL TRANSPORT CONTAINERS FROM TRASH ENCLOSURE TO TRASH STAGING AREA PRIOR TO PICK-UP.
2. STAFF SHALL MOVE CONTAINERS BACK TO TRASH ENCLOSURE ONCE CONTAINERS HAVE BEEN EMPTIED.

**GENERAL NOTES.**

1. ANY DESIGNS OR SOLUTIONS SHOWN IN DRAWING, EITHER DIRECT OR IMPLIED, ARE HEREBY CLARIFIED AS EXAMPLES AND SHALL NOT BE CONSIDERED COMPLETE DESIGNS FOR CONSTRUCTION. THESE DRAWINGS ARE INTENDED TO SUPPLEMENT THE SUBMITTAL PACKAGE FROM ARCHITECT.
2. ANY PARTIAL INFORMATION, OMISSIONS, OR INACCURATE DESCRIPTIONS OF WORK SHOWN IN DRAWINGS, WHICH ARE NECESSARY TO PERFORM THE SCOPE OF WORK, SHALL NOT RELIEVE THE CONTRACTOR FROM COMPLETION OF WORK. ALL WORK SHALL BE PERFORMED TO SATISFY THE MINIMUM REQUIREMENTS OF THE CURRENT APPLICABLE BUILDING CODES.
3. CONTRACTOR SHALL FIELD VERIFY ALL DIMENSIONS AND CONDITIONS PRIOR TO START OF CONSTRUCTION. THE ARCHITECT SHALL BE PROMPTLY NOTIFIED OF ANY INCONSISTENCIES AND/OR DISCREPANCIES.

**LEGEND.**

— STAFF TRASH ROUTE FROM TRASH ENCLOSURE TO TRASH STAGING AREA.

| PROJECTED COLLECTION SCHEDULE: TRASH ENCLOSURE |                       |            |
|--|-----------------------|------------|
| SERVICE:                                       | CONTAINER VOL / TYPE: | FREQUENCY: |
| DRY WASTE                                      | (5) 96-GALLON TOTES   | 1x/wk      |
| WET WASTE                                      | (1) 96-GALLON TOTE    | 1x/wk      |

NOTE: SEE ARCHITECTURAL DRAWINGS FOR ALL DIMENSIONS NOT NEEDED FOR PLACEMENT OF TRASH EQUIPMENT.

**TRASH ROUTE / STAGING PLAN**  
SITE PLAN AT GROUND LEVEL

SCALE: 1/32" = 1'-0"

| REV   | ISSUED FOR | DATE     |
|-------|------------|----------|
| REV 2 | SUP        | 10/19/21 |

**NOT FOR CONSTRUCTION**

**WAT KHMER KAMPUCHEA KROM**  
2740 RUBY AVENUE  
SAN JOSE, CALIFORNIA 95148  
APN: 652-29-014  
PROJECT FILE NO. SP20-024

**ANDREW MANN ARCHITECTURE**  
360 LANGTON STREET, SUITE 302  
SAN FRANCISCO, CALIFORNIA 94103  
TELEPHONE: 415-883-4134  
ANDREW@MANNARCHITECTURE.COM

**AMERICAN TRASH MANAGEMENT, INC**  
1500 Powell Street, Suite 220  
Emeryville, CA 94608  
415.292.5400  
www.trashmanage.com

SHEET TITLE:  
**TRASH ROUTE / STAGING PLAN**

ORIGINAL SHEET ISSUE DATE:  
10/18/21

SCALE: As Indicated  
DRAWN BY: BM

SHEET NUMBER:

**TR0.0**

DATE PRINTED:

| PROJECTED COLLECTION SCHEDULE: TRASH ENCLOSURE |                           |            |
|--|---------------------------|------------|
| SERVICE:                                       | CONTAINER VOL / TYPE:     | FREQUENCY: |
| DRY WASTE                                      | (5) 96-GALLON TOTES CARTS | 1x/wk      |
| WET WASTE                                      | (1) 96-GALLON TOTE CART   | 1x/wk      |

NOTE: SEE ARCHITECTURAL DRAWINGS FOR ALL DIMENSIONS NOT NEEDED FOR PLACEMENT OF TRASH EQUIPMENT.

**SHEET NOTES:**

**TRASH ENCLOSURE PLAN. GROUND LEVEL.**

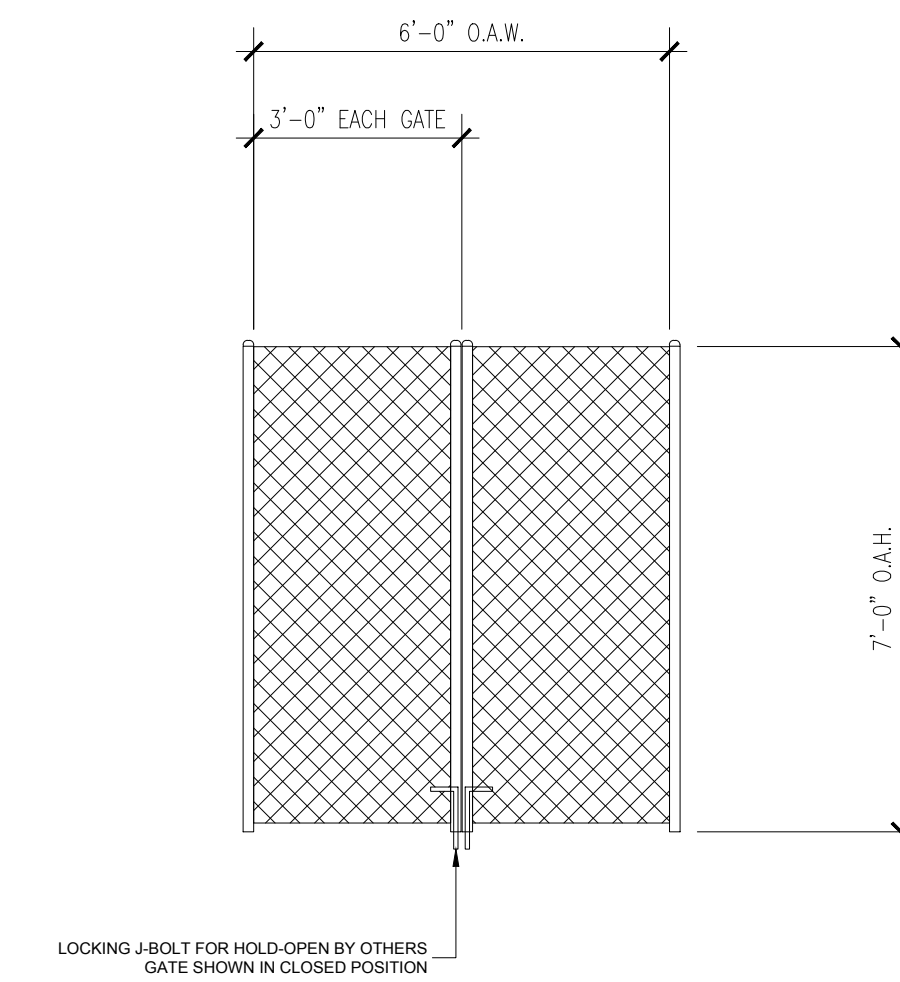
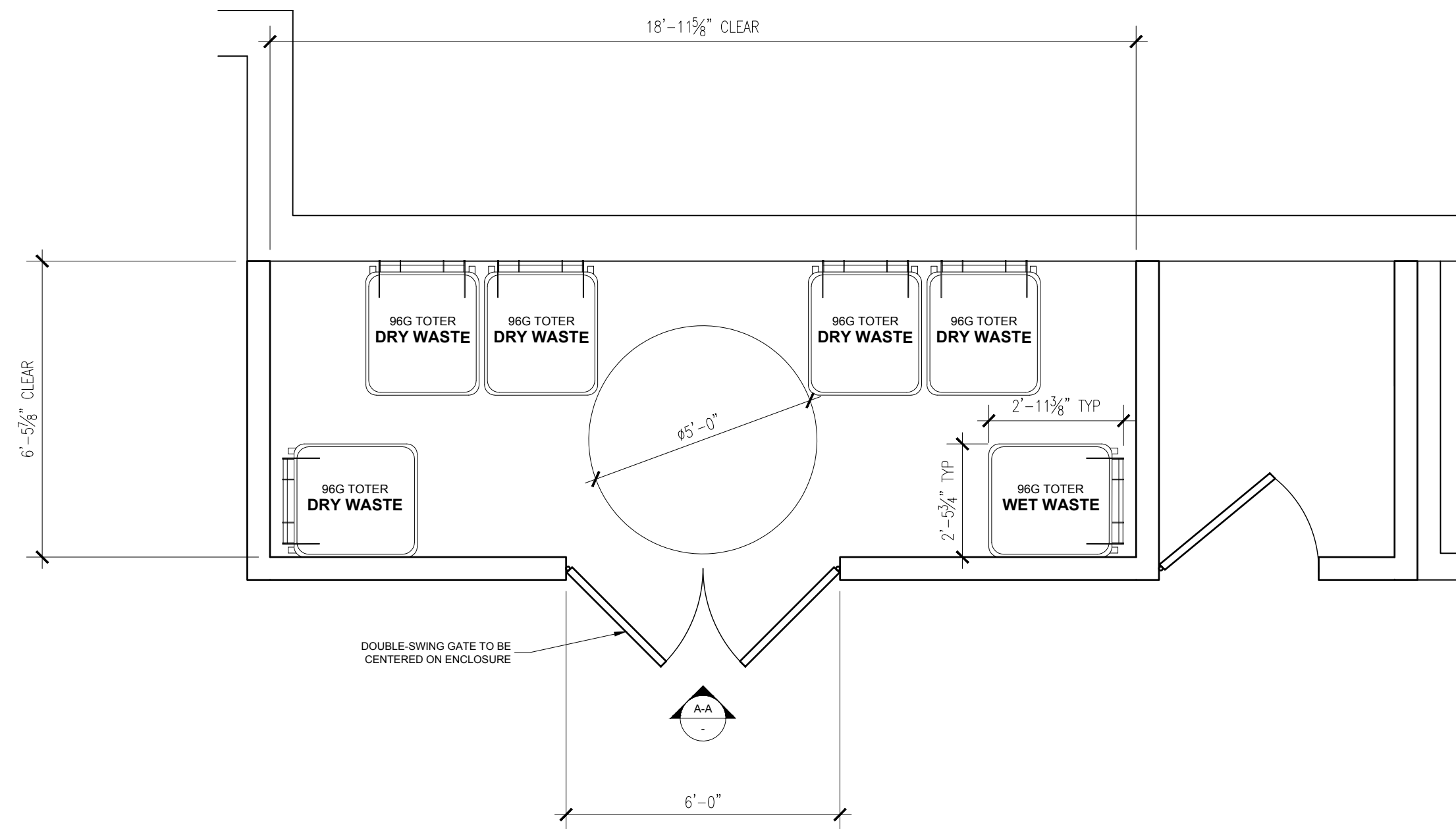
- TRASH ENCLOSURE BY OTHERS SHALL BE 1HR FIRE-RATED CONSTRUCTION - RESTRICTED ACCESS. MATERIAL SHOULD BE REINFORCED CMU.
- FLOOR SHALL BE FINISHED WITH WATERPROOF DECK COATING.
- 6'-0" WIDE DOUBLE-SWING GATE WITH LOCKING J-BOLTS FOR HOLD-OPENS. PROVIDE FLOOR SWEEPS AND HOLD-OPENS FOR TRANSFERRING CONTAINERS. DO NOT INSTALL THRESHOLD.
- ROOM SHALL BE MECHANICALLY VENTILATED WITH (1) CFM/SQ FT PER 2019 CBC.

**PATH OF TRAVEL / STAGING PLAN.**

- STAFF SHALL TRANSPORT CONTAINERS TO TRASH ENCLOSURE WITH TAYLOR-DUNN BIGFOOT CARRIER PRIOR TO PICK-UP.
- FRONT-LOAD COLLECTION VEHICLE TO ENTER SITE ON FOOTHILL BOULEVARD AND EXIT ON FOOTHILL BOULEVARD.
- HAULER WILL PULL CONTAINERS OUT OF ENCLOSURE TO FORK AND EMPTY CONTAINERS. HAULER WILL PUSH CONTAINERS BACK INTO ENCLOSURE ONCE EMPTIED.
- STAFF SHALL MOVE CONTAINERS BACK TO TRASH ROOMS ONCE CONTAINERS HAVE BEEN EMPTIED.

**GENERAL NOTES.**

- ANY DESIGNS OR SOLUTIONS SHOWN IN DRAWING, EITHER DIRECT OR IMPLIED, ARE HEREBY CLARIFIED AS EXAMPLES AND SHALL NOT BE CONSIDERED COMPLETE DESIGNS FOR CONSTRUCTION. THESE DRAWINGS ARE INTENDED TO SUPPLEMENT THE SUBMITTAL PACKAGE FROM ARCHITECT.
- ANY PARTIAL INFORMATION, OMISSIONS, OR INACCURATE DESCRIPTIONS OF WORK SHOWN IN DRAWINGS, WHICH ARE NECESSARY TO PERFORM THE SCOPE OF WORK, SHALL NOT RELIEVE THE CONTRACTOR FROM COMPLETION OF WORK. ALL WORK SHALL BE PERFORMED TO SATISFY THE MINIMUM REQUIREMENTS OF THE CURRENT APPLICABLE BUILDING CODES.
- CONTRACTOR SHALL FIELD VERIFY ALL DIMENSIONS AND CONDITIONS PRIOR TO START OF CONSTRUCTION. THE ARCHITECT SHALL BE PROMPTLY NOTIFIED OF ANY INCONSISTENCIES AND/OR DISCREPANCIES.



SECTION A-A  
6'-0" WIDE DOUBLE-SWING GATE

SCALE: 3/4" = 1'-0"

**TRASH ENCLOSURE PLAN**  
GROUND LEVEL

| REV   | ISSUED FOR | DATE     |
|-------|------------|----------|
| REV 2 | SUP        | 10/19/21 |

**NOT FOR CONSTRUCTION**

**WAT KHMER KAMPUCHEA KROM**  
 2740 RUBY AVENUE  
 SAN JOSE, CALIFORNIA 95148  
 APN: 652-29-014  
 PROJECT FILE NO. SP20-024

**ANDREW MANN ARCHITECTURE**  
 360 LANGTON STREET, SUITE 302  
 SAN FRANCISCO, CALIFORNIA 94103  
 TELEPHONE: 415-883-4134  
 ANDREW@MANNARCHITECTURE.COM

**AMERICAN TRASH MANAGEMENT, INC**  
 1500 Powell Street, Suite 220  
 Emeryville, CA 94608  
 415.292.5400  
 www.trashmanage.com

SHEET TITLE:  
**TRASH ENCLOSURE PLAN**

ORIGINAL SHEET ISSUE DATE:  
 10/18/21

SCALE: As Indicated  
 DRAWN BY: BM

SHEET NUMBER:

**TR0.1**

**NOT FOR CONSTRUCTION**

**WAT KHMER KAMPUCHEA KROM**  
 2740 RUBY AVENUE  
 SAN JOSE, CALIFORNIA 95148  
 APN: 652-29-014  
 PROJECT FILE NO. SP20-024

**ANDREW MANN ARCHITECTURE**  
 360 LANGTON STREET, SUITE 302  
 SAN FRANCISCO, CALIFORNIA 94103  
 TELEPHONE: 415-883-4134  
 ANDREW@MANNARCHITECTURE.COM

**AMERICAN TRASH MANAGEMENT, INC**  
 1500 Powell Street, Suite 220  
 Emeryville, CA 94608  
 415.292.5400  
 www.trashmanage.com

SHEET TITLE:  
**SIDE LOADER COLLECTION VEHICLE MANEUVER**

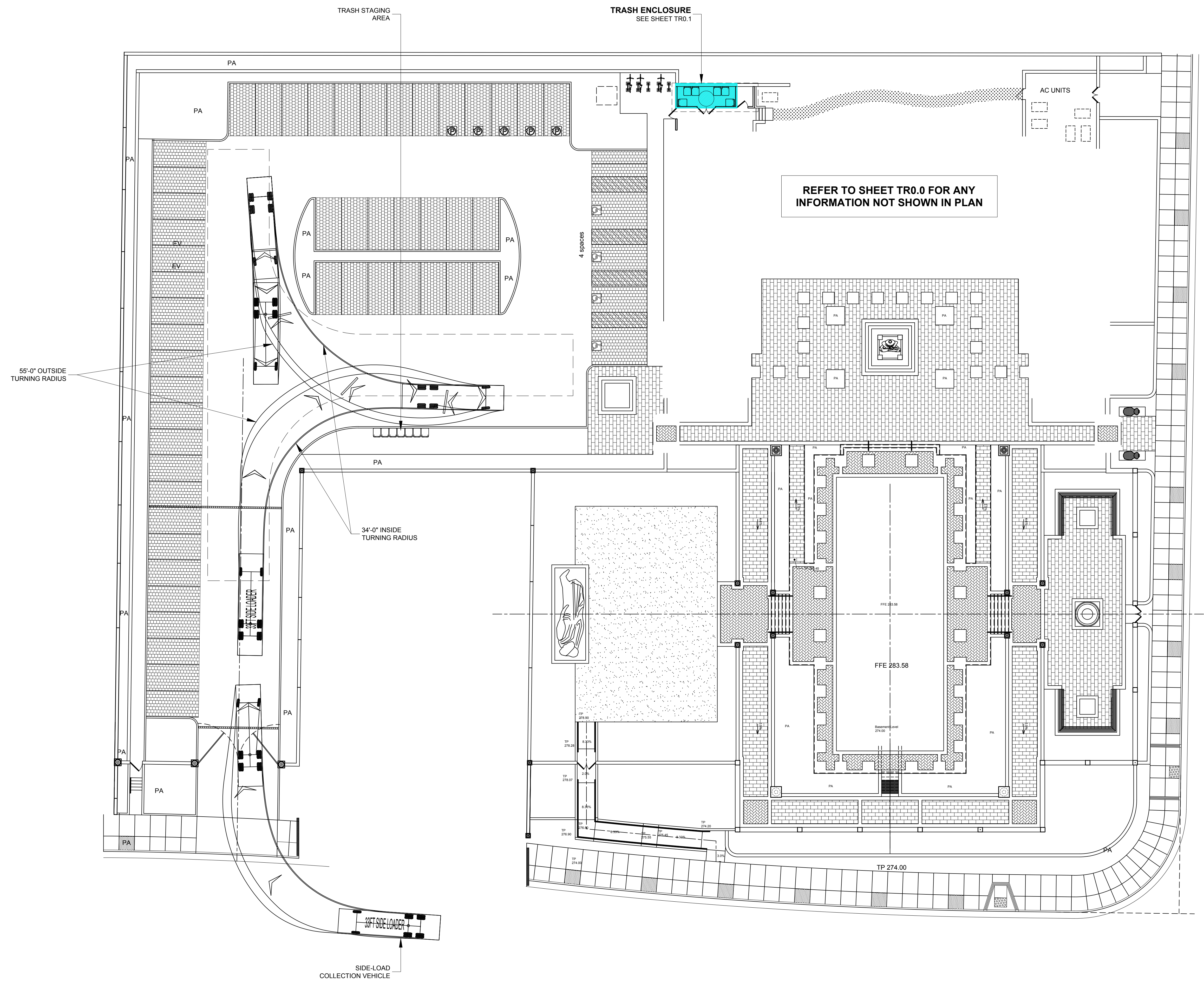
ORIGINAL SHEET ISSUE DATE:  
 10/18/21

SCALE: As Indicated  
 DRAWN BY: BM

SHEET NUMBER

**TR0.2**

DATE PRINTED:



**SIDE LOAD COLLECTION VEHICLE**  
 TRASH STAGING AREA

SCALE: NTS