

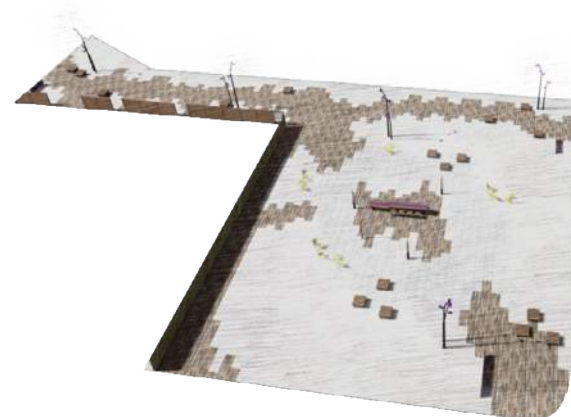


4.1 Proposed Design | Illustrative Plan + Spatial Organization

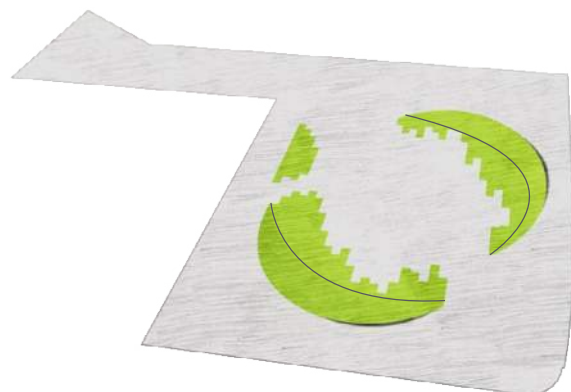
# RELAX<sub>at</sub> Pellier Park

The characteristic softness at Pellier is created by layering site elements and plant materials. The inspiration for our design of Pellier Park came from the agricultural history of the Valley and the shape of the prune itself. We imagined what the cut fruit before drying would look like if it was overlaid on the

site. Abstracting the basic components - pit, flesh, leaves, and stem - these become the layers that define the park organization. Drawing on the row patterns of agriculture, the raking of different materials across the park still allow the prune shape to be visible from tall buildings and planes above while softening the strict organization. The resulting landscape is comfortable, relaxing, buffered, and human-scaled.



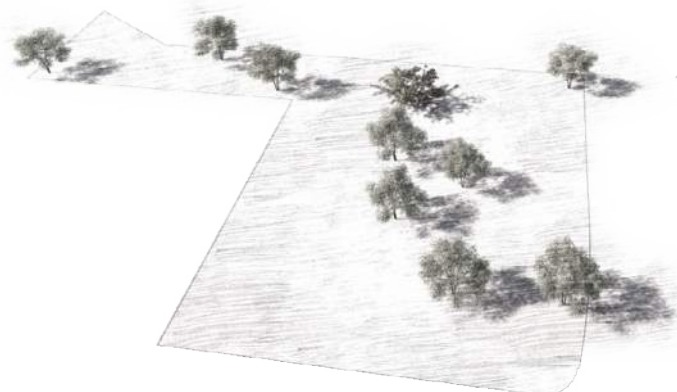
THE STEM + PIT  
Paving + Furnishing



THE FLESH  
Sloped lawn



THE LEAVES  
Understory row planting



THE STEM  
Flowering trees



THE LEAVES  
Shade trees



\*52.1



\*52.2



\*52.3



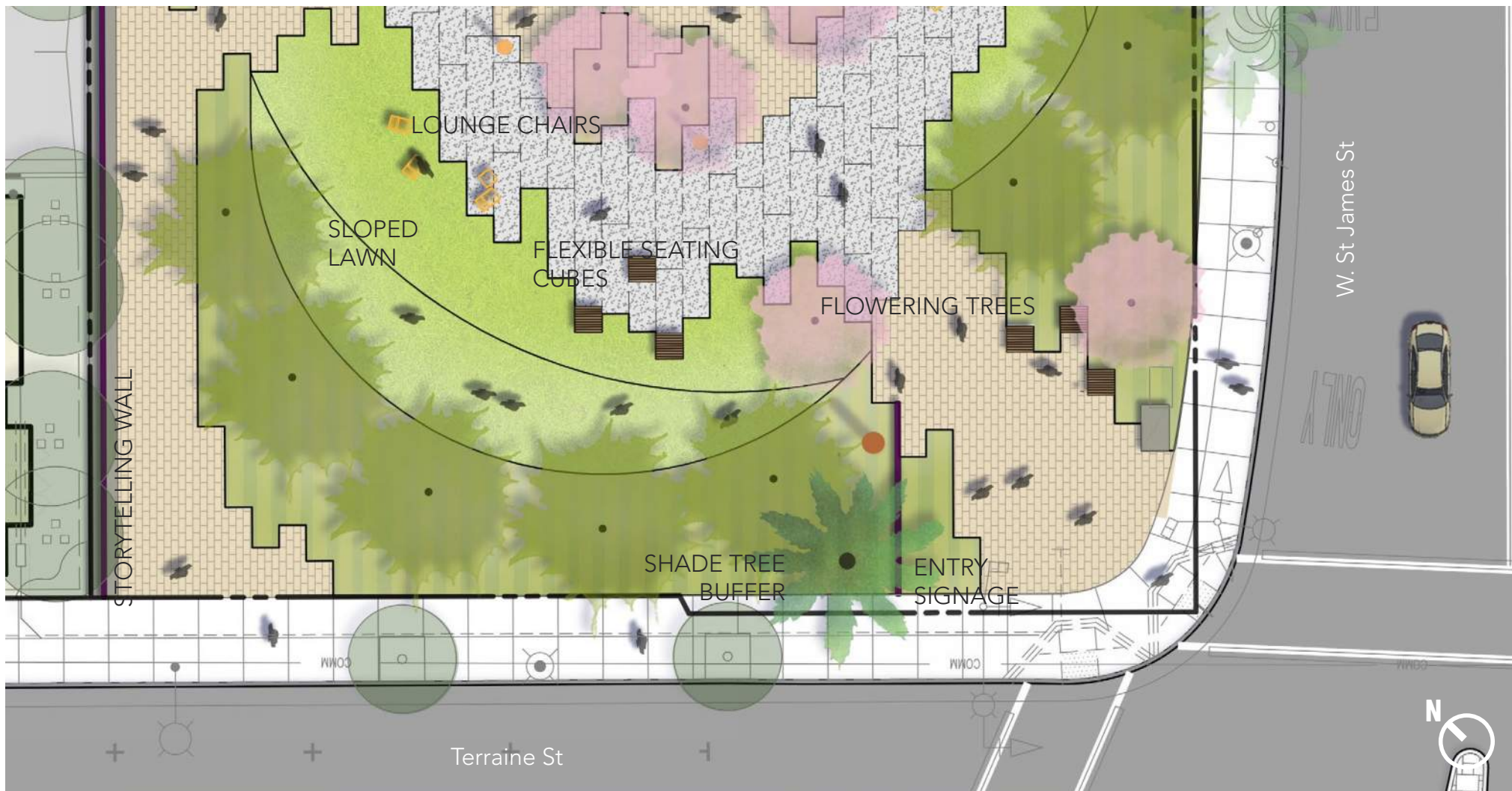
\*53.1



\*53.2

## 4.1 Proposed Design | Layers of Planting and Furnishing

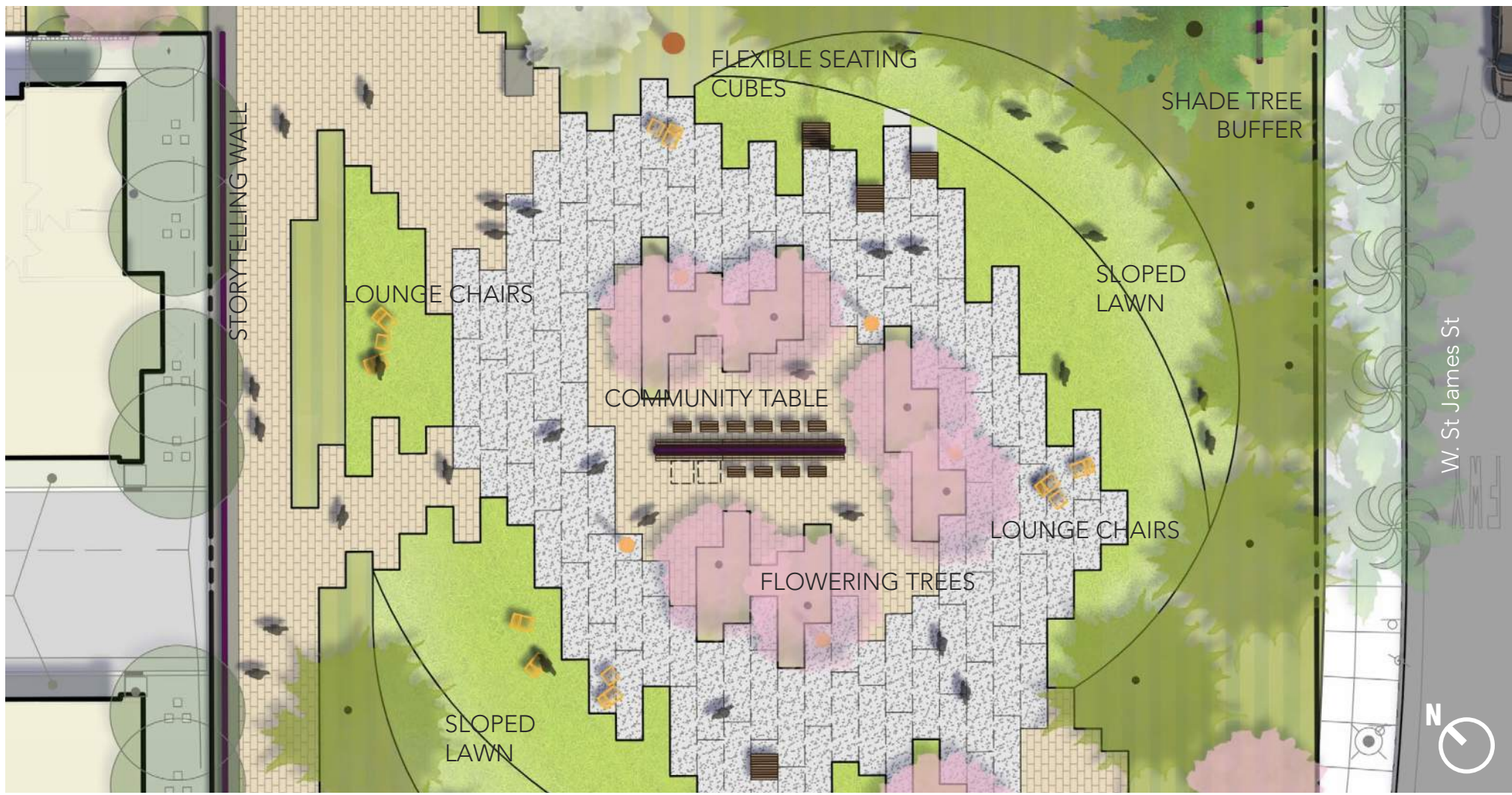
\*See Appendix A1 for Image Credit



The main entry point for Pellier Park is on the highly visible corner of Terraine and West St. James. Buffered on either side by the rows of understory and shade trees, the entry court welcomes visitors into the park with its signage and opportunities for seating. The drift of flowering trees begins at this corner and draws people into the core of the park and through to the paseo.

\*See Appendix A1 for Image Credit

4.1 Proposed Design | Entry Court



The center of the park is formed by a pair of arcing berms, providing a feeling of enclosure and creating an occupiable edge. The backside of the berms are planted with low understory and mid-level shade trees while the fronts are a comfortable sloped lawn for relaxing. The lawn continues at the base of the berms, spreading into the center and providing space for flexible lounge seating.

\*See Appendix A1 for Image Credit

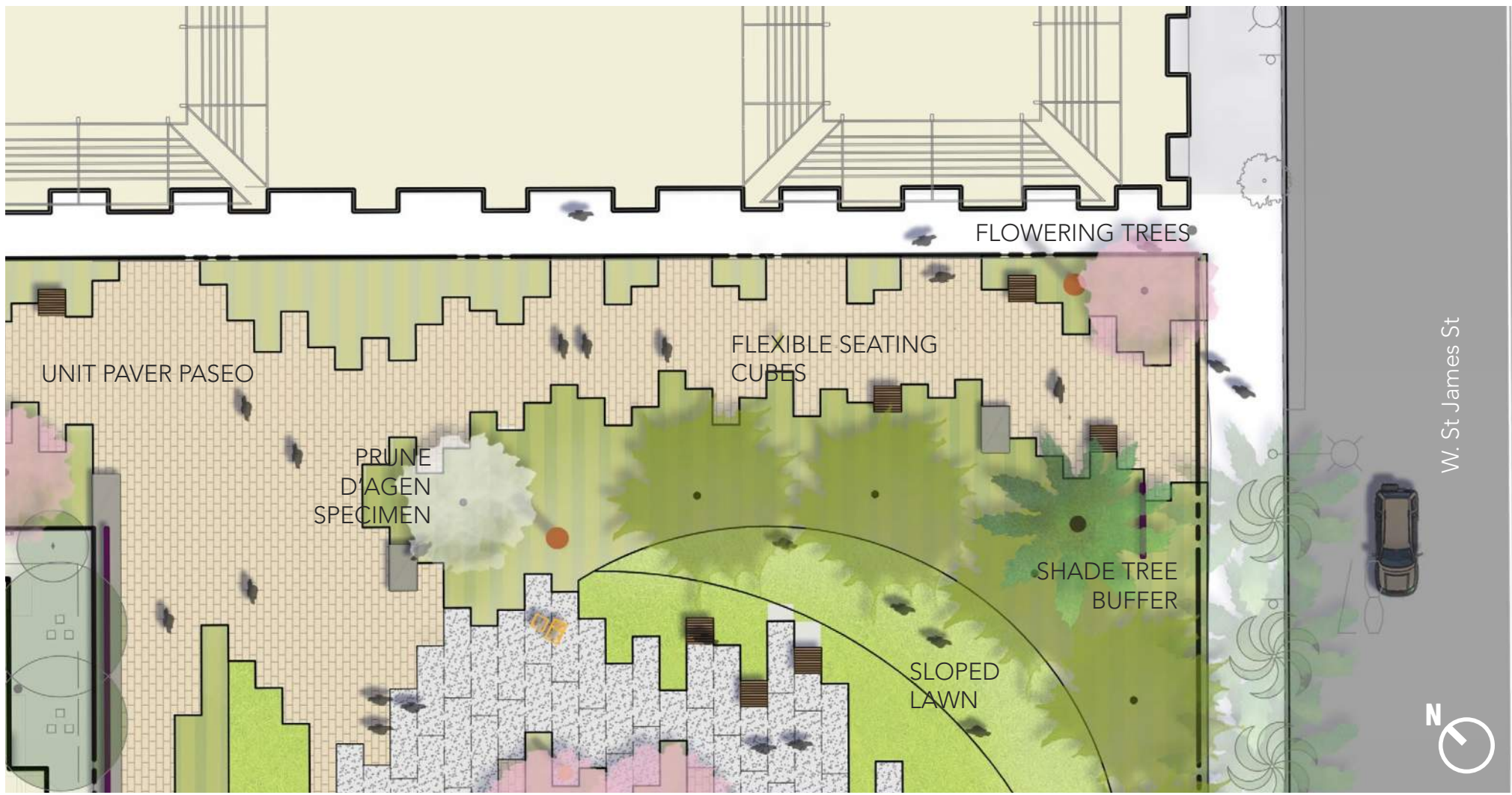
4.1 Proposed Design | Sloped Lawn



The paseo runs from north to south connecting Devine and West St James Street. These secondary entrances are equally important for circulation in the park and feature the plaques commemorating Pellier Park as a historic site. The meandering quality of the unit paver path mixed with soft vegetation draws people through the space while offering opportunities for seating. On the north end, Trumark town home residents have direct access onto the paseo while the fence screens the units from view.

\*See Appendix A1 for Image Credit

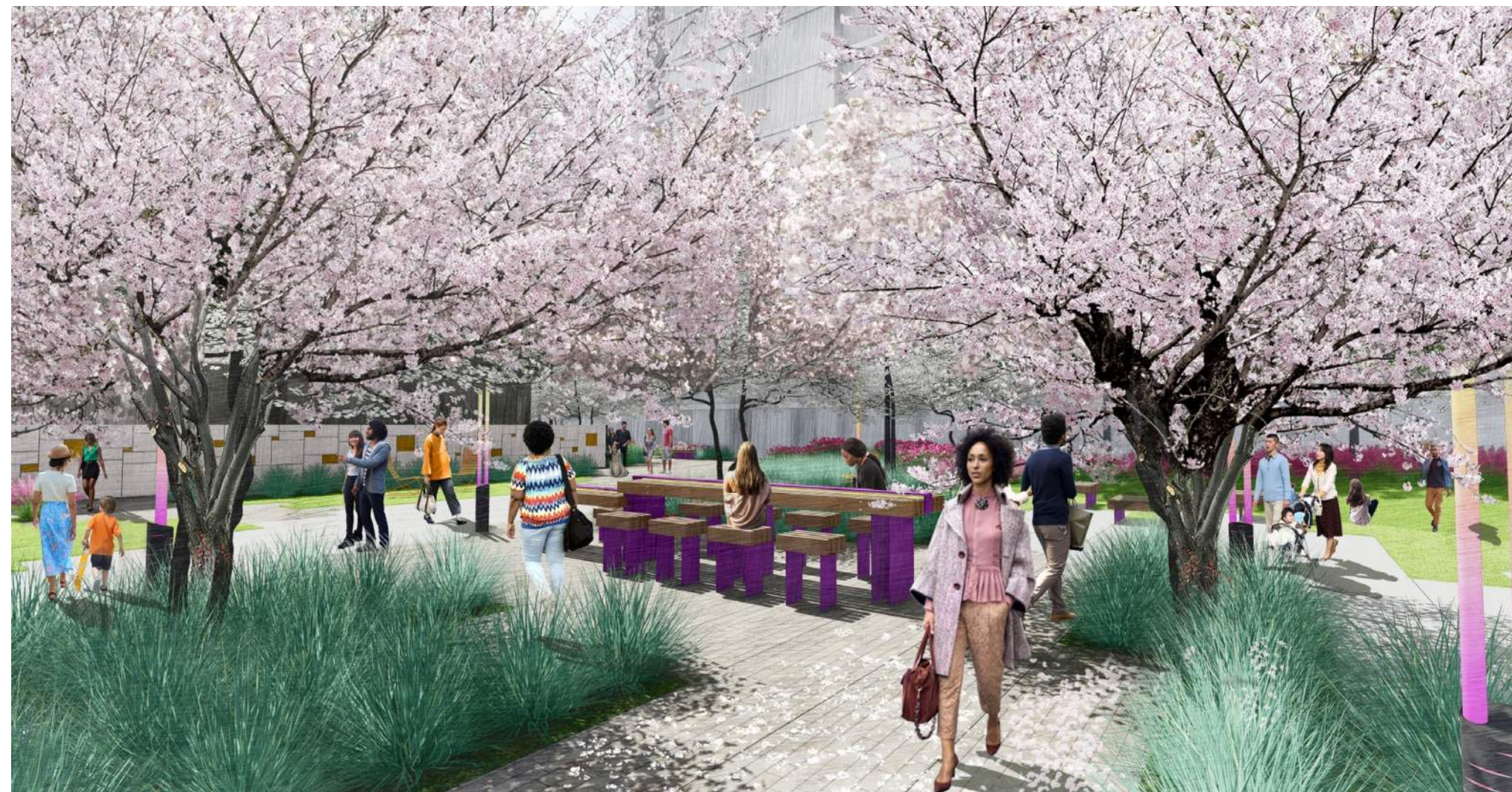
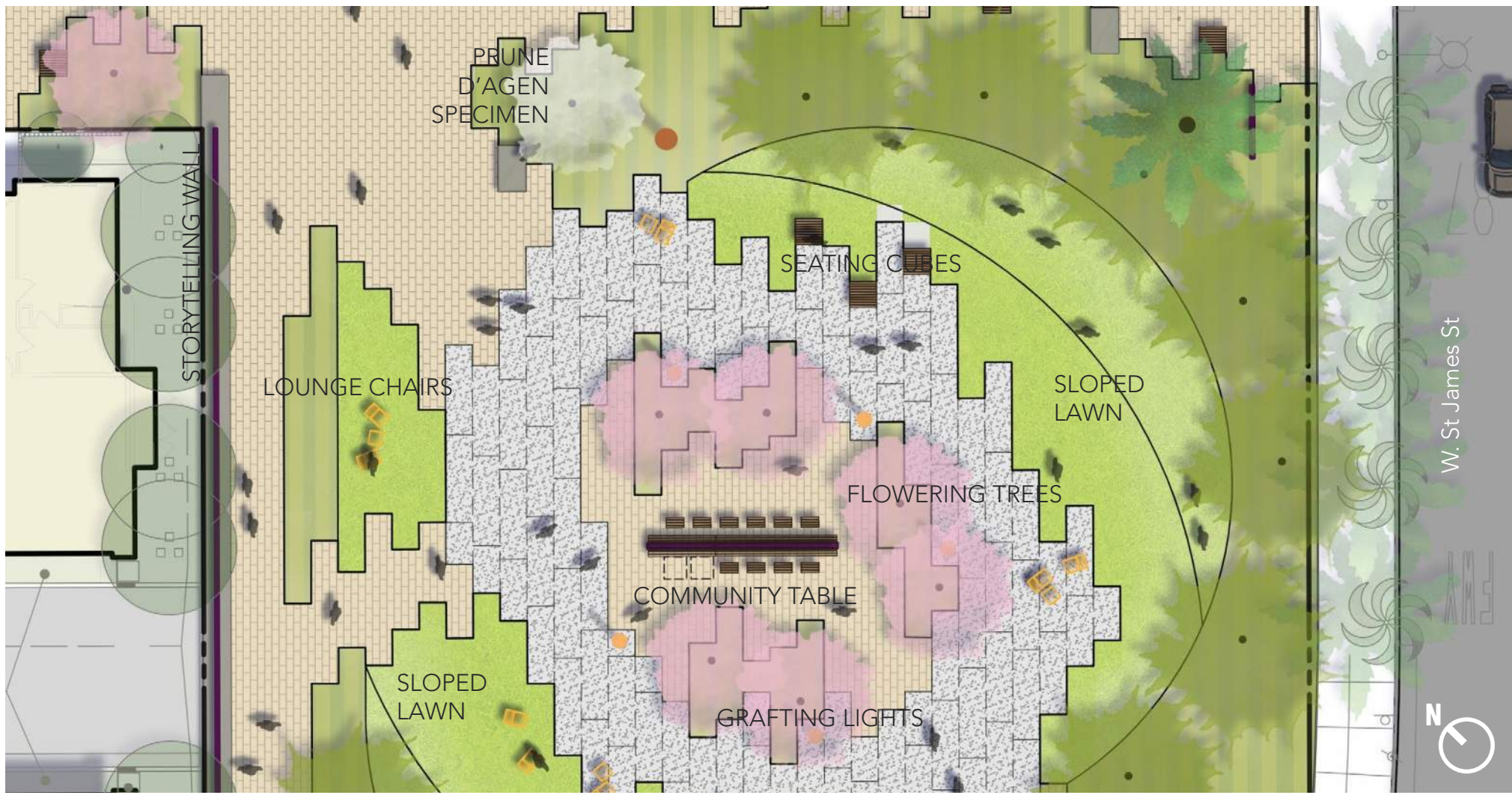
4.1 Proposed Design | Paseo North



The south end of the paseo opens up right across the street from Silvery Towers, receiving neighbors coming from there as well as people from Downtown and San Pedro Market. This end of the paseo will also be heavily trafficked by residents of City Heights coming off their lobby.

\*See Appendix A1 for Image Credit

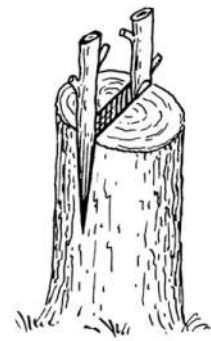
4.1 Proposed Design | Paseo South



At the very center of Pellier Park is the community grove. Anchored by the community table, this grove of flowering trees creates a calm, intimate gathering place for neighbors to come together. The table is designed with two heights to encourage adults and children alike while also providing an accessible area for wheelchairs. Viewed from above, this is the "pit" of the fruit with the concrete unit pavers floating in the field of concrete and highlighted by the custom grafting lights laid out in a grid around the space.

\*See Appendix A1 for Image Credit

4.1 Proposed Design | Community Grove



Highlighting the importance of the community grove as the central gathering place in the park, these custom light fixtures are located around the table area to provide subtle evening lighting. The inspiration for the lights is the process of grafting that was used to originally graft the French prune clipping onto the native rootstock.

These "grafting lights" reference this practice and explore the concept of grafting the modern onto the historical. The custom bar-height community table will also feature under lighting to fill the grove with a soft, purple glow and make it a comfortable gathering place at dusk.

#### 4.1 Proposed Design | Grafting Lights + Community Table





With history playing such an important role in Pellier Park, we wanted to build on the tradition of plaques started in the original 1970s park. The storytelling wall has been designed to serve as a location not only for the 22 donor plaques from before but also as a place for new plaques that tell more about the story of the Pellier family, the history of agriculture in the valley, and the memories of prunes shared by the community. More than a wall, we want this to be a beautiful feature along the edge of the park.



Plaque and Gate from original Pellier Park

The design of the wall panels will draw inspiration from the espalier tradition of branching structure, with stone integrated into the base referencing natural materials typically found in cultivated areas. The plaques will be displayed in a cohesive time line reflecting Pellier's history mixed with cultural references to the prune gathered from community input, and future events.

\*See Appendix A1 for Image Credit