



SAN JOSE  
**PARKS, RECREATION &  
NEIGHBORHOOD SERVICES**

**Fee Study Task Force  
Meeting #5, February 17, 2022**

**Part II  
General Plan and Department  
*Goals***

# Agenda



- Part I - General Plan 101
- Part II – Service Level Goals
- Part III - Population Projections
- Part IV - Pros and Cons of a Plan Based and/or Service Level Study

# High Quality Facilities, Policy PR-1.1

Provide 3.5 acres [of parkland] per 1,000 population of neighborhood/community serving parkland through a combination of 1.5 acres of public park *and* 2.0 acres of recreational school grounds open to the public per 1,000 San José residents.

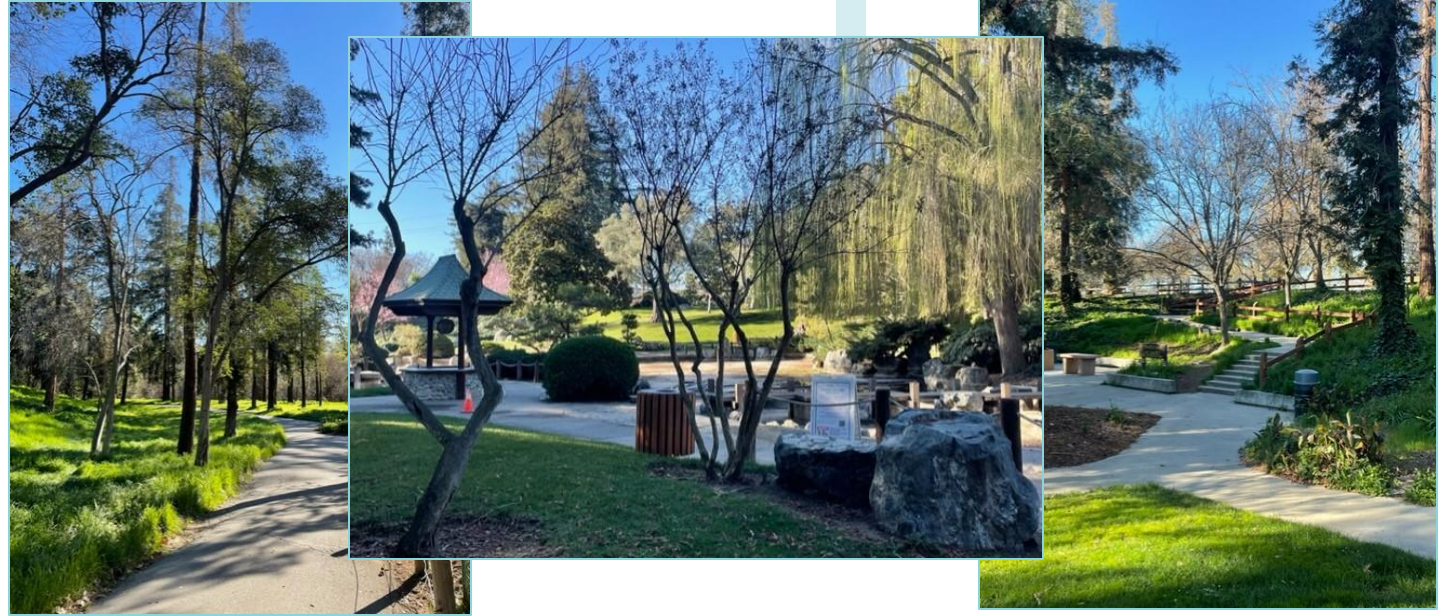


William Lewis Manley Park in Communications Hill



# High Quality Facilities, Policy PR-1.2

Provide 7.5 acres [of parkland] per 1,000 population of citywide/ regional park and open space lands through a combination of facilities provided by the City of San José and other public land agencies.



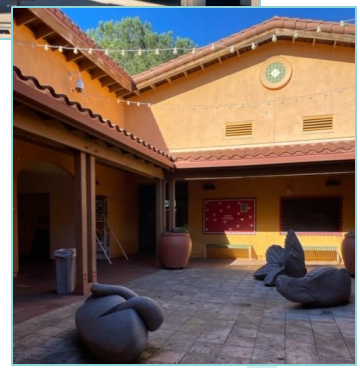
Kelly Park – 172 acres



# High Quality Facilities, Policy PR-1.3



Mayfair Community Center

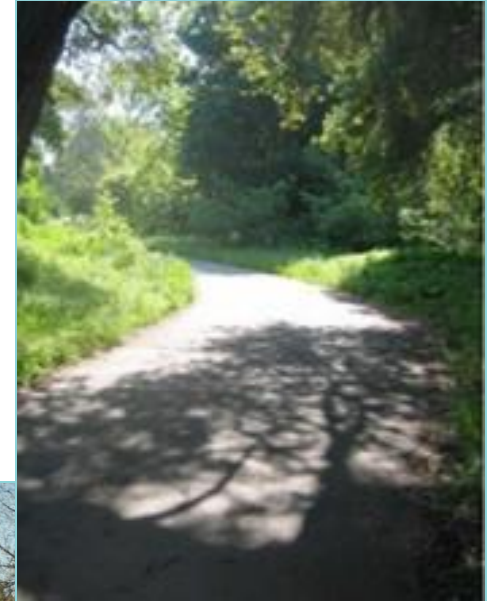


Provide 500 square feet [of community center space] per 1,000 population of community center space.

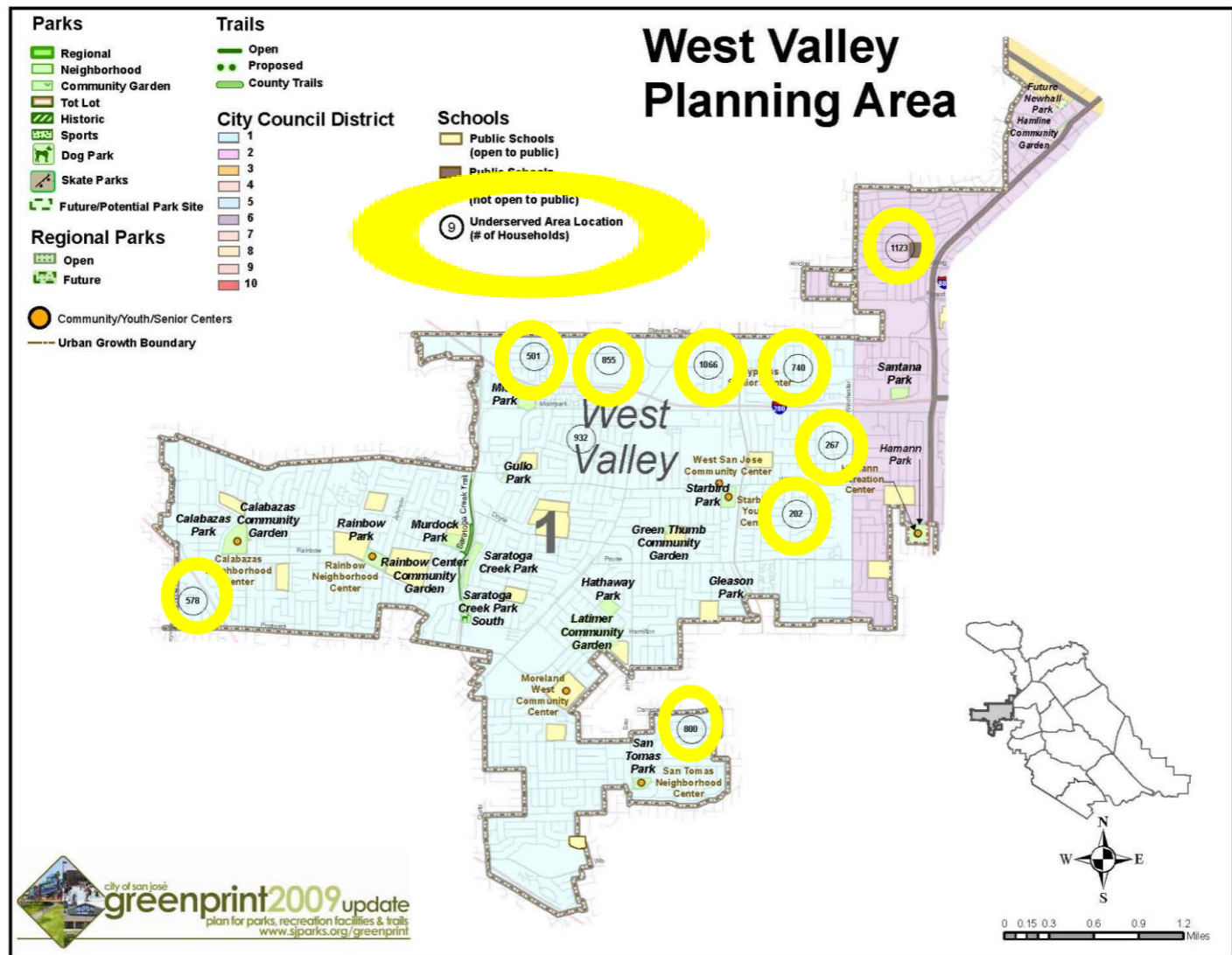
# Trail Network

## TN-2.12

- Develop a trail network that extends a minimum of 100 miles.



# 2009 Greenprint and “underserved areas”



# Ten Minute Walk Campaign



We're building a nationwide movement to improve access to parks & green spaces, while transforming communities, and getting people to the places where they live some of their best moments.

The “10-Minute Walk Campaign” is a nationwide movement to ensure that everyone has safe access to a quality park or green space within a 10-minute walk.

A ten-minute walk is commonly considered to be about half a mile.



# ActivateSJ – Equity & Access

## ACTIVATESJ STRATEGIC PLAN (2020-2040)

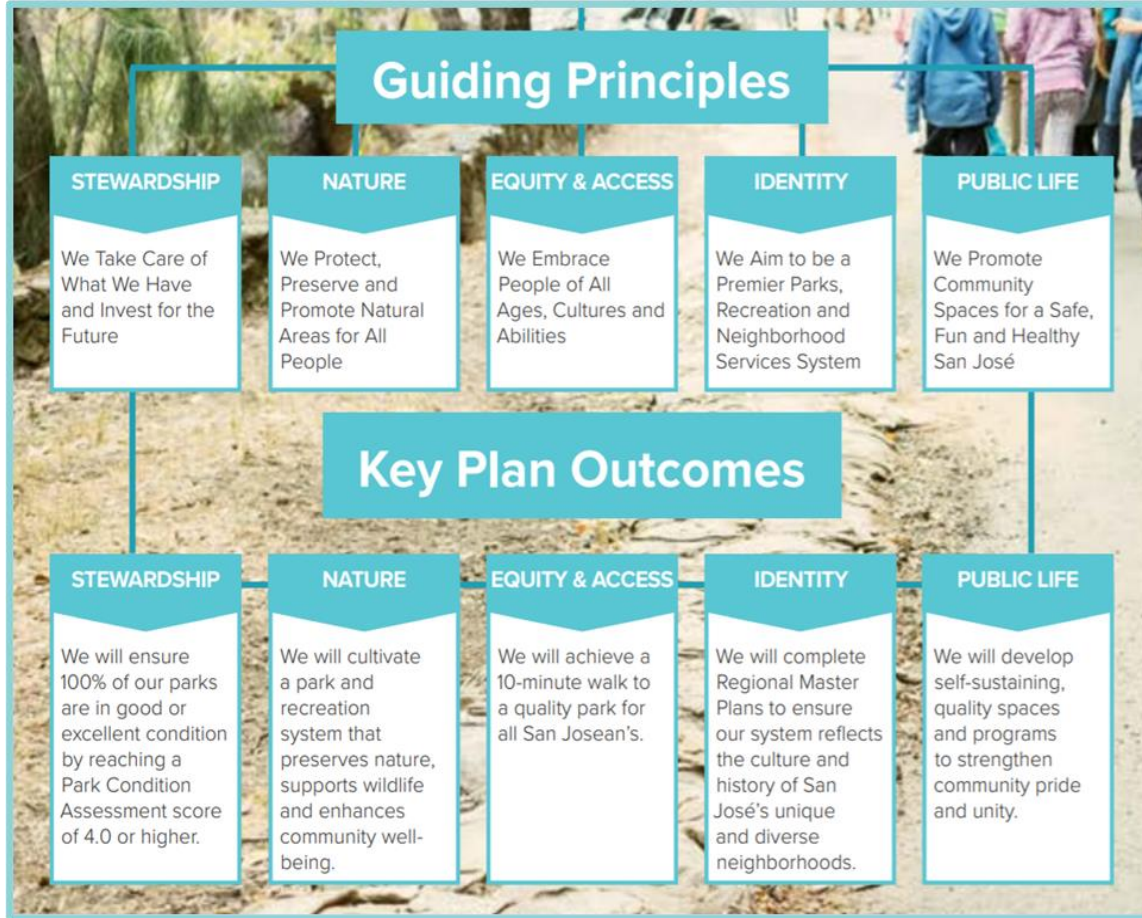
A Park and Recreation System that builds community and inspires belonging through exceptional experiences and destinations

**SAN JOSE**  
PARKS, RECREATION & NEIGHBORHOOD SERVICES  
Building Community Through Fun

Si necesita este documento traducido a otro idioma, póngase en contacto con [ActivateSJ@sanjoseca.gov](mailto:ActivateSJ@sanjoseca.gov).

Nếu quý vị cần dịch tài liệu này sang ngôn ngữ khác, xin vui lòng liên hệ [ActivateSJ@sanjoseca.gov](mailto:ActivateSJ@sanjoseca.gov).

Almaden Lake Park Egg Hunt



## EQUITY & ACCESS

We will achieve a 10-minute walk to a quality park for all San Josean's.

# Goals Summarized

- For every 1,000 people, provide
  - 3.5 acres of neighborhood/community parkland
  - 7.5 acres of citywide/regional parkland
  - 500 square feet of community center
- Build 100 miles of trails
- Locate new parks within a 10-minute walk of residences

**Questions?**