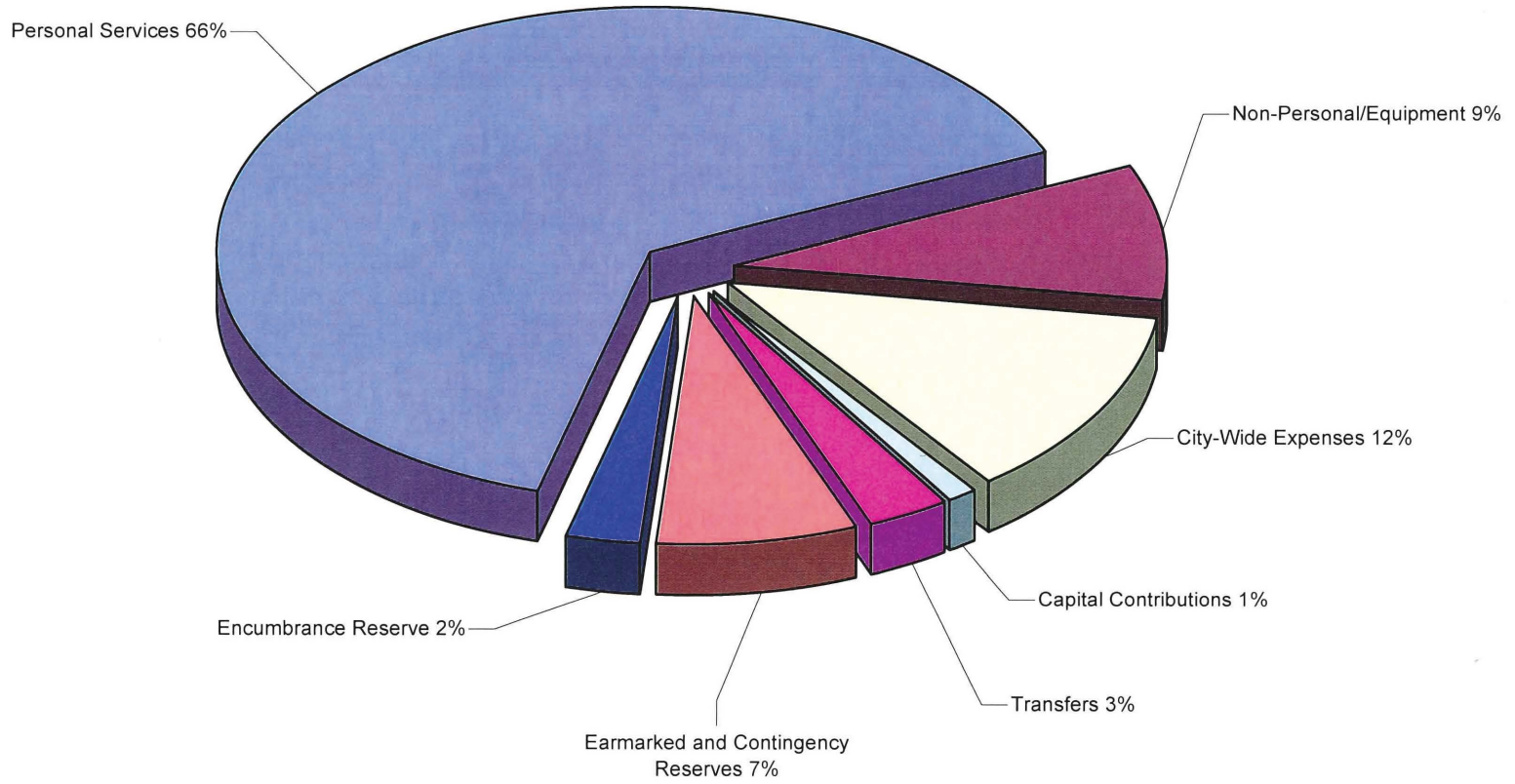


CITY OF SAN JOSE
2011-2012 ADOPTED OPERATING BUDGET
SUMMARY OF GENERAL FUND USES BY CATEGORY



TOTAL GENERAL FUND USES \$906,458,009

CITY OF SAN JOSE
2011-2012 ADOPTED OPERATING BUDGET

SUMMARY OF GENERAL FUND USES BY CATEGORY

USE OF FUNDS	1 2009-2010 Actuals	2 2010-2011 Adopted Budget	3 2010-2011 Modified Budget*	4 2011-2012 Forecast Budget	5 Adopted Increase/ (Decrease)	6 2011-2012 Adopted Budget	2 TO 6 % Increase/ (Decrease)
DEPARTMENTAL							
Personal Services	608,960,197	612,369,745	612,806,746	661,427,789	(64,506,095)	596,921,694	(2.5%)
Non-Personal/Equipment	80,368,467	85,899,111	84,072,953	81,827,413	(626,953)	81,200,460	(5.5%)
Departmental Total	689,328,664	698,268,856	696,879,699	743,255,202	(65,133,048)	678,122,154	(2.9%)
NON-DEPARTMENTAL							
City-Wide Expenses	92,285,521	118,906,594	207,739,909	82,488,961	30,451,595	112,940,556	(5.0%)
Capital Contributions	12,587,567	8,934,514	8,276,357	6,973,000	2,722,000	9,695,000	8.5%
Transfers	25,424,995	29,038,636	28,538,763	25,723,798	(630,000)	25,093,798	(13.6%)
Earmarked Reserves	N/A	43,813,155	45,877,253	10,818,986	19,843,595	30,662,581	(30.0%)
Ending Fund Balance	N/A	N/A	12,931,000	N/A	N/A	N/A	N/A
Contingency Reserve	N/A	29,309,000	29,309,000	26,309,000	3,000,000	29,309,000	0.0%
Encumbrance Reserve	20,634,920	25,823,874	20,634,920	20,634,920	0	20,634,920	(20.1%)
Total Non-Departmental	150,933,003	255,825,773	353,307,202	172,948,665	55,387,190	228,335,855	(10.7%)
TOTAL EXPENDITURES	\$840,261,667	\$954,094,629	\$1,050,186,901	\$916,203,867	(\$9,745,858)	\$906,458,009	(5.0%)

* As of June 30, 2011