



200 East Santa Clara St, 3<sup>rd</sup> Fl  
San Jose, CA 95113

Planning Division  
**Community Meeting NOTICE**  
**GP22-001 & C22-014**  
**September 19, 2022**  
**6:00 P.M.**

We are notifying you about a community meeting on a nearby development. Please learn about how to effectively participate at [www.sanjoseca.gov/DevelopmentHearingGuide](http://www.sanjoseca.gov/DevelopmentHearingGuide). In response to COVID-19, this public meeting will take place on Zoom. To participate, see instructions on the agenda at: <https://www.sanjoseca.gov/PlanningMeetings>.

Zoom meeting link: <https://sanjoseca.zoom.us/j/83639056365>

Zoom meeting phone number: +1 213 338 8477 or +1 408 638 0968 or 877 853 5257 (Toll Free) or 888 475 4499 (Toll Free)

Meeting ID: 836 3905 6365

Interpretation services are available upon request. Please request at least 3 days in advance of the meeting date by emailing [planningsupportstaff@sanjoseca.gov](mailto:planningsupportstaff@sanjoseca.gov) and indicate which language is requested.

TO:

## Proposed Project File Nos. GP22-001 & C22-014

General Plan Amendment to change the 2040 General Plan Land Use/Transportation Diagram designation from Public/Quasi Public (PQP) to Heavy Industrial (HI) and a Conforming Conventional Rezoning from R-1-8 Residence District (8DU/Acre) to Heavy Industrial (HI) on a 3.6-gross acre site.

**Project Applicant:** Valley Oak Partners

**Meeting Purpose:** To hear community feedback

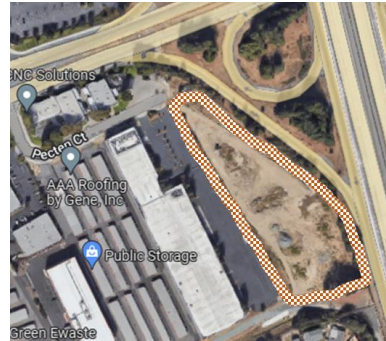
For Americans with Disabilities Act accommodation, please call 408-535-1260 (Voice) or 408-294-9337 (TTY) at least two days before the hearing.

Para informacion en Español, comuniquese con Jennifer Provedor al 408-793-4100 y visite [www.bit.ly/SJ-GuíaEspañol](http://www.bit.ly/SJ-GuíaEspañol).

Muốn biết tin tức bằng tiếng Việt, xin quý vị liên lạc Nhu Nguyen ở số 408-793-4305 và truy cập [www.bit.ly/SJ-hướngdẫn](http://www.bit.ly/SJ-hướngdẫn).

For questions/comments, contact project manager Karen Gauss at 408-535-7956 or [karen.gauss@sanjoseca.gov](mailto:karen.gauss@sanjoseca.gov).

For questions/comments regarding the scope of the Initial Study should be sent to Nhu Nguyen at 408-793-4174 or [nhu.nguyen@sanjoseca.gov](mailto:nhu.nguyen@sanjoseca.gov).



Project Location:  
Easterly Terminus of Pecten Ct

The file is available for review Monday through Friday 9:00 a.m.-12:00 p.m. | 1:00-5:00 p.m. by submitting an email request to [karen.gauss@sanjoseca.gov](mailto:karen.gauss@sanjoseca.gov) Additional information at: [www.sjpermits.org](http://www.sjpermits.org)