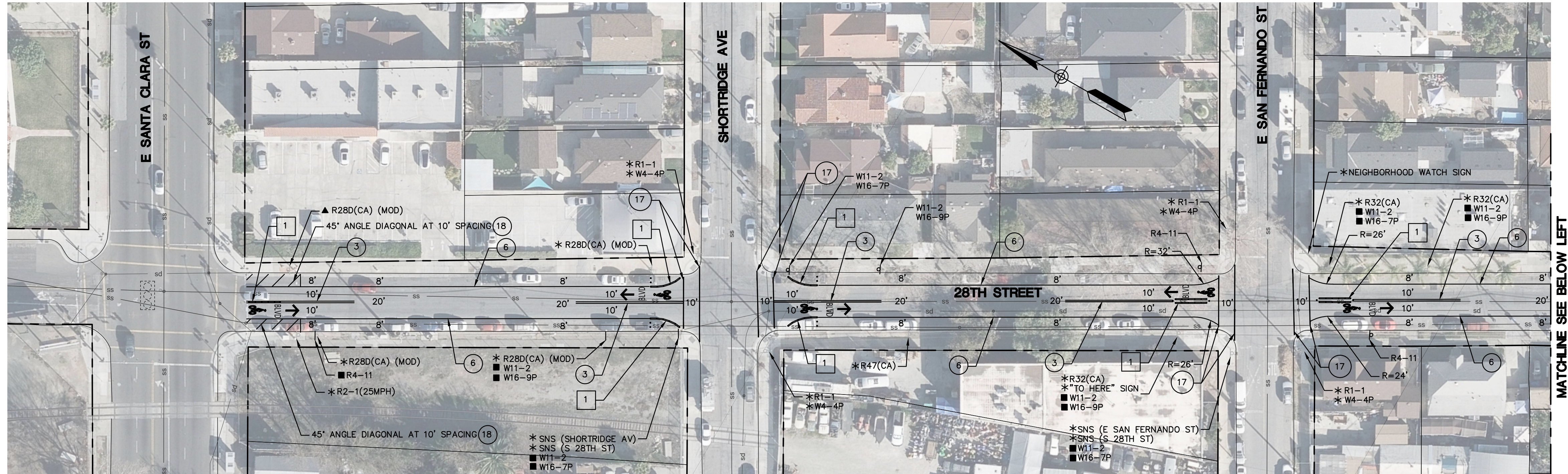
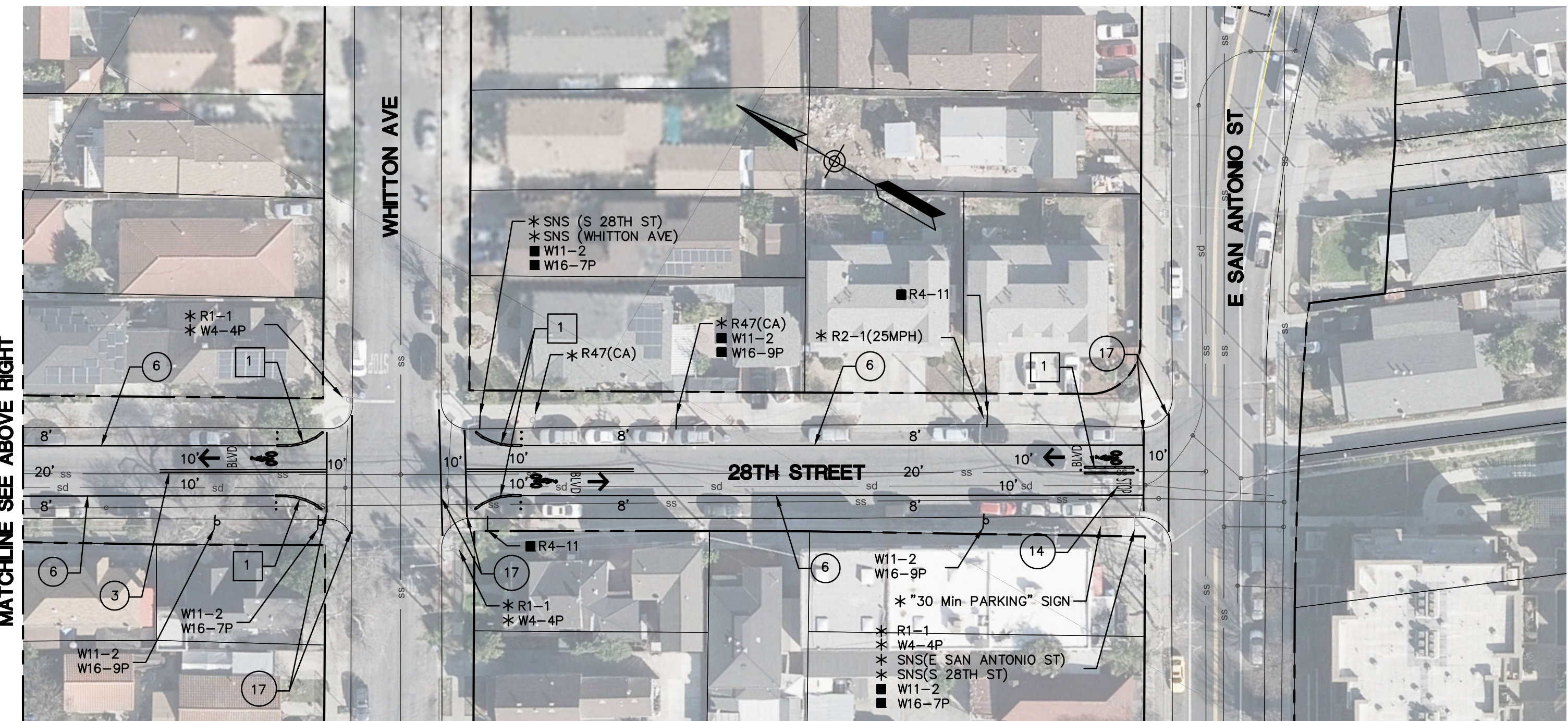


**NOTE:**

- 1 INSTALL STATEWIDE FG 300 CURB SYSTEM WITH FLEXIBLE POSTS OR EQUAL AS APPROVED BY THE CITY OF SAN JOSE.



MATCHLINE SEE BELOW LEFT

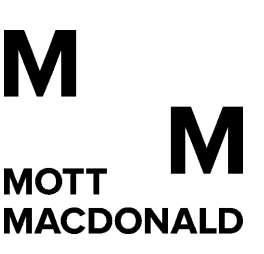


MATCHLINE SEE ABOVE RIGHT

STRIPING LEGEND		
STRIPING ELEMENT	STRIPING ELEMENT	STRIPING ELEMENT
① STATE DETAIL 9 (MOD, TYPE C MARKER)	⑪ STATE DETAIL 39	⑳ STATE DETAIL 40
② STATE DETAIL 12 (MOD, TYPE C MARKER)	⑫ STATE DETAIL 39A	㉑ BICYCLE LOOP DETECTOR SYMBOL
③ STATE DETAIL 22	⑬ RESERVED FOR FUTURE USE	㉒ STATE DETAIL 39A (MOD, 4" WIDE)
④ RESERVED FOR FUTURE USE	⑭ ARROWS / MESSAGES	㉓ YIELD LINE
⑤ STATE DETAIL 25	⑮ CHATTER BARS	㉔ GREEN PAVEMENT ENHANCEMENT
⑥ STATE DETAIL 27B	⑯ RESERVED FOR FUTURE USE	㉕ RESERVED FOR FUTURE USE
⑦ STATE DETAIL 29	⑰ SOLID 12" WHITE	㉖ SOLID 24" YELLOW
⑧ STATE DETAIL 32	⑱ SOLID 12" YELLOW	㉗ STATE DETAIL 41
⑨ STATE DETAIL 37B	⑲ SOLID 24" WHITE	㉘ RESERVED FOR FUTURE USE
⑩ STATE DETAIL 38	㉚ STATE DETAIL 26 (MOD, 24' SPC)	㉙ RESERVED FOR FUTURE USE

**28TH STREET PARKING IMPACTS TABLE**

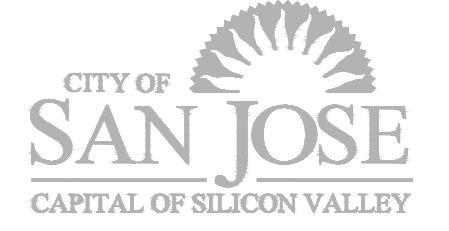
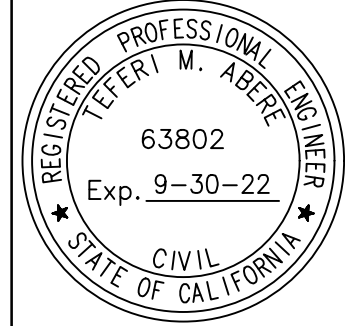
PARKING SPACES LOST	9
PARKING SPACES GAINED	0
NET TOTAL (LOSS)	9



**CITY OF SAN JOSE**  
**EN MOVIMENTO BICYCLE BOULEVARD**  
**28TH ST BETWEEN E. SANTA CLARA ST & E. SAN ANTONIO ST**  
**SIGNING AND STRIPING**

7			
6			
5			
4			
3			
2			
1			
	REVISIONS	INITIALS	DATE

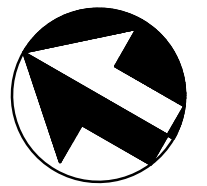
DEPT. OF PUBLIC WORKS	DEPT. OF TRANSPORTATION
MATERIALS LAB _____	TRAFFIC OPS. _____
CONSTRUCTION _____	GEOMETRICS _____
SURVEY _____	TRAFFIC SIGNAL OPS. _____
SANITARY _____	MAINTENANCE _____
STORM _____	
ELECTRICAL _____	
ROADS & BRIDGES _____	



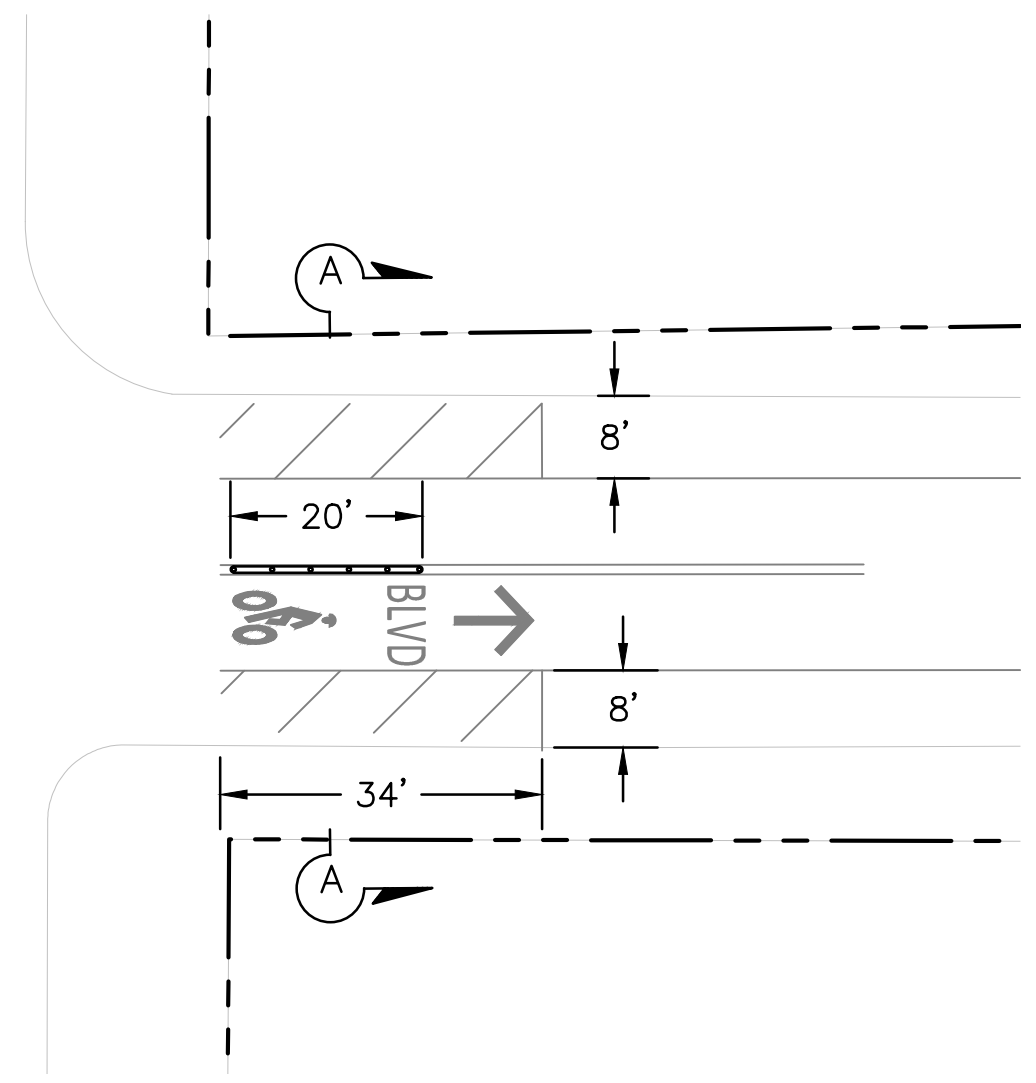
DEPARTMENT OF PUBLIC WORKS SAN JOSE, CALIFORNIA	
DESIGNED BY J. CHO	MATT CANO DIRECTOR OF PUBLIC WORKS
CHECKED BY T. ABERE	
PROJ MGR T. ABERE	
DATE 06/17/2022	
SCALE 1" = 40'	
SHEET NO. 6 OF 30 SHEETS	

Friday, June 17, 2022 2:01:08 PM

Drawing: C:\users\jcho90539\irms37000\06-03-28th ST\_BONITA AVE-01-SS-01.dwg Jun 17, 2022, 2:01pm

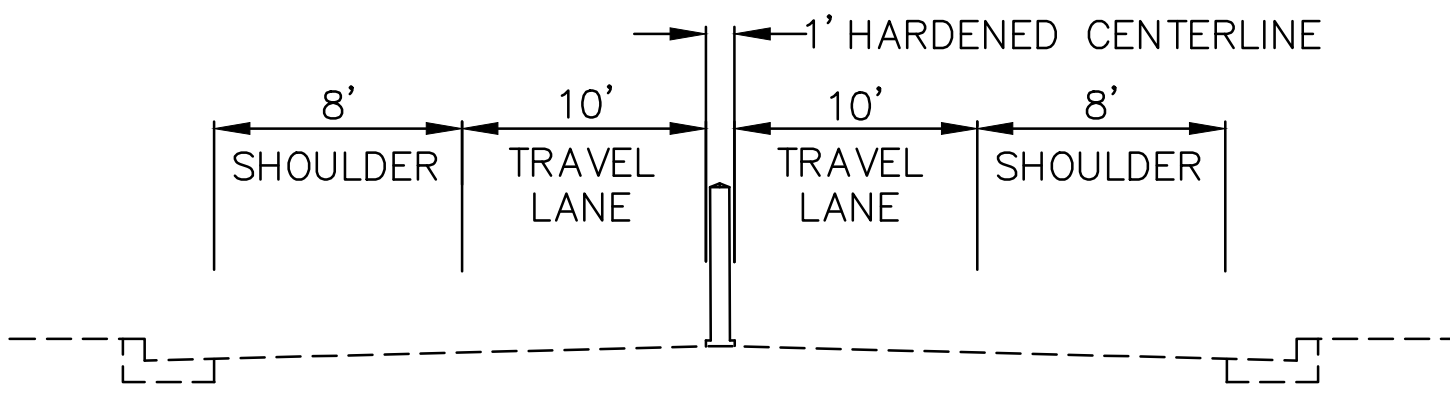


E SANTA CLARA ST



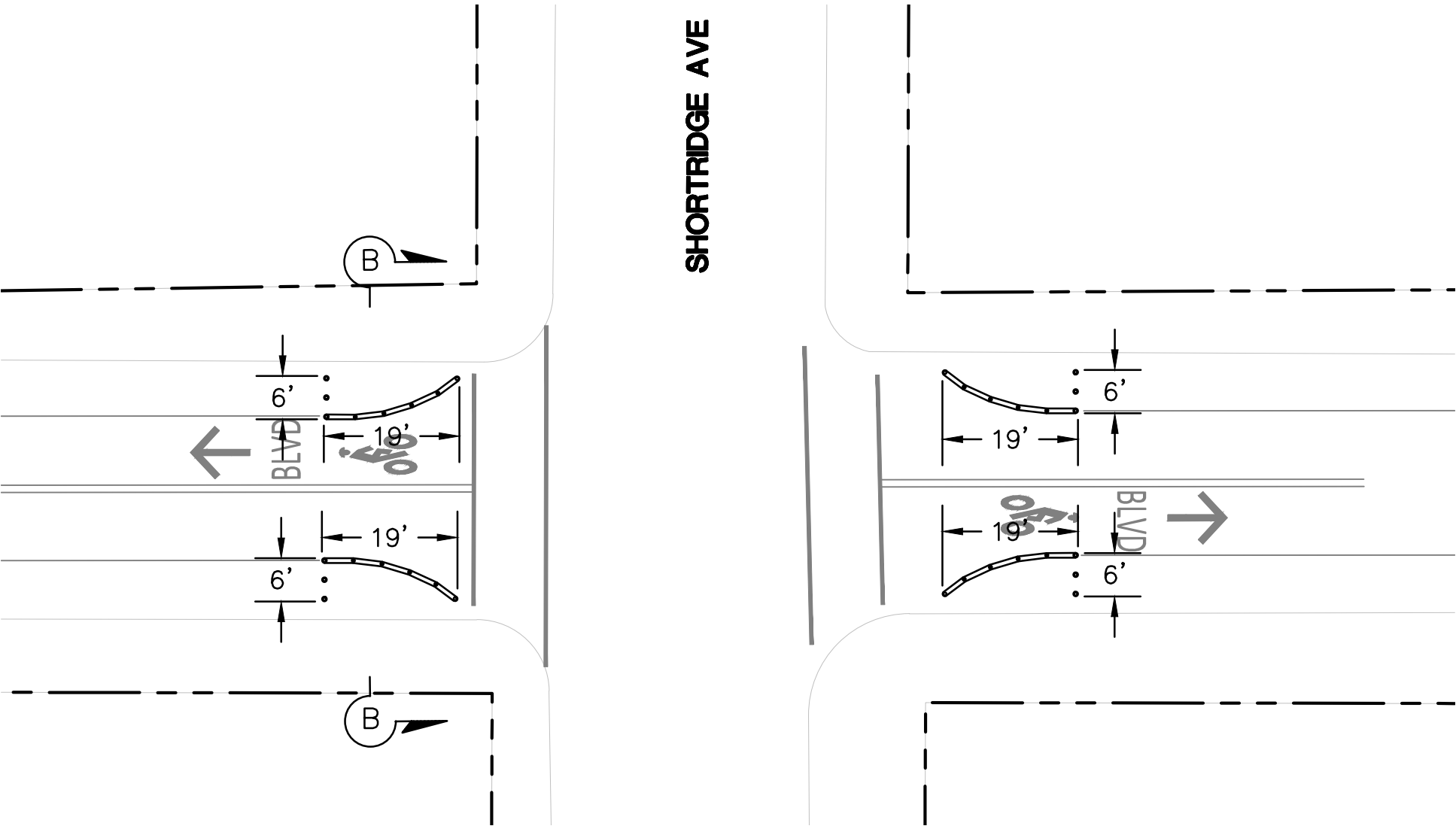
DETAIL 12

INTERSECTION LAYOUT - 28TH ST AND E. SANTA CLARA ST  
SCALE: 1"=20'



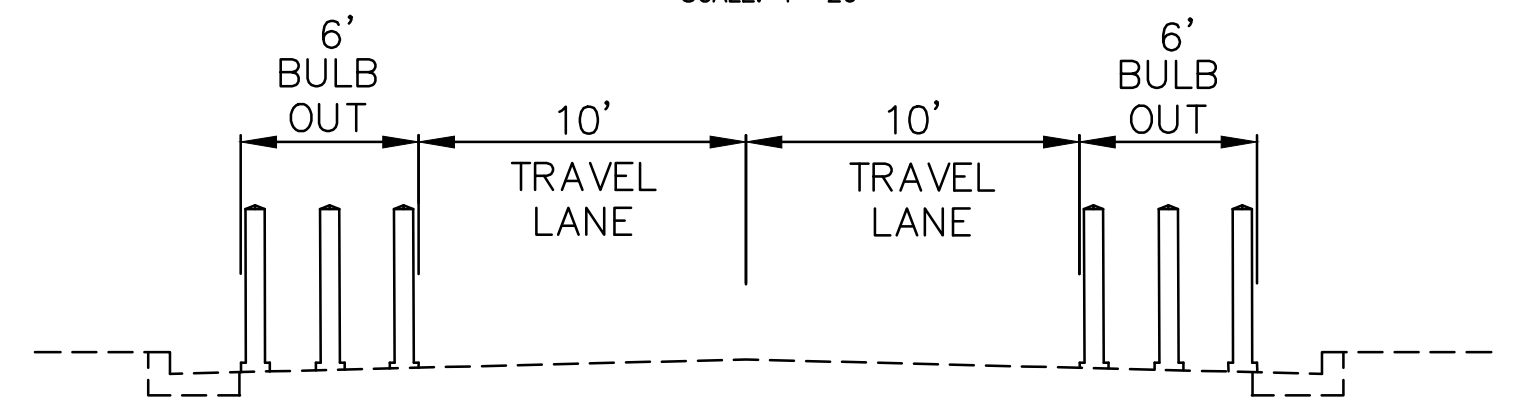
SECTION A-A  
NTS

SHORTRIDGE AVE



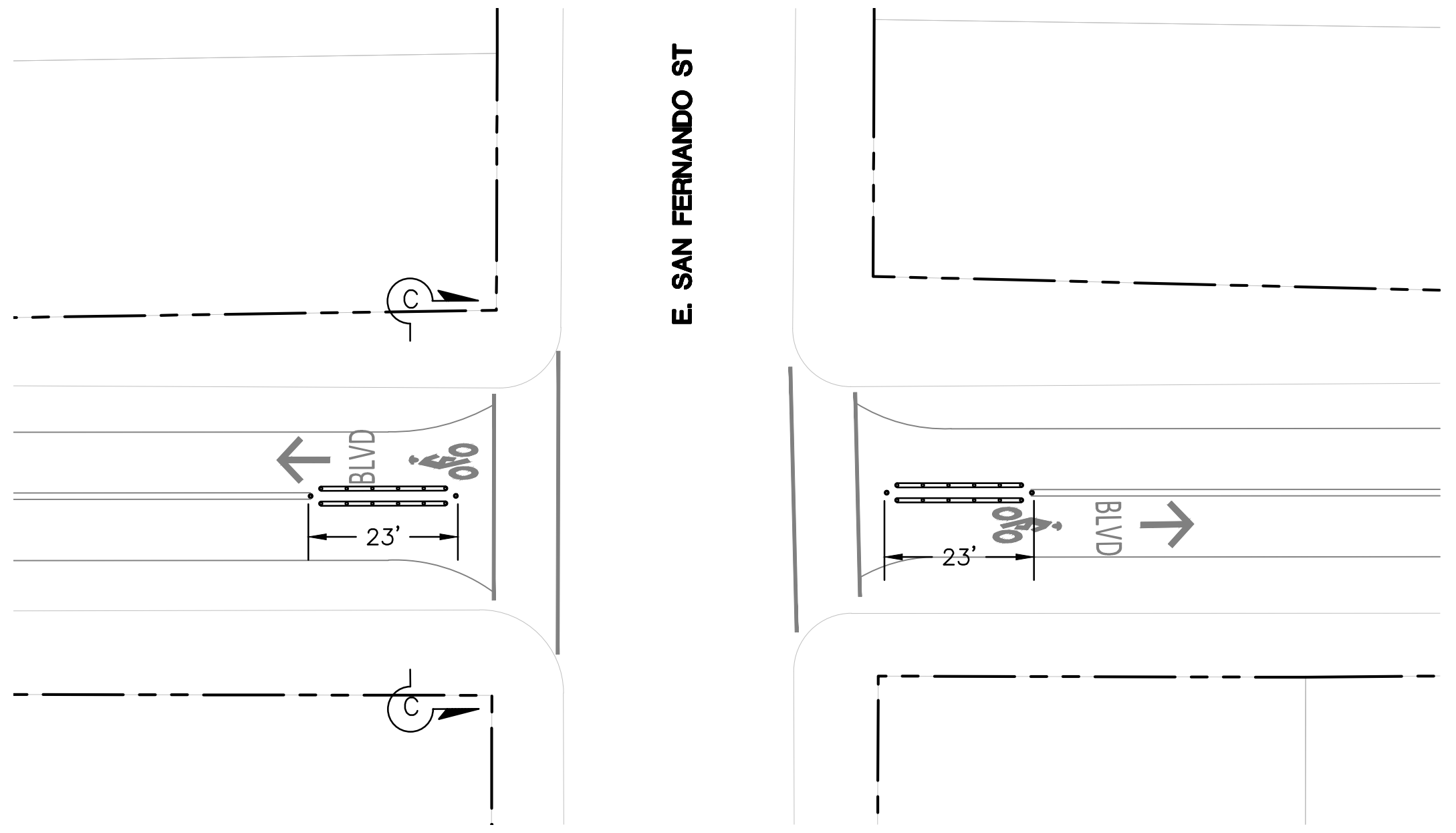
DETAIL 13

INTERSECTION LAYOUT - 28TH ST AND SHORTRIDGE AVE  
SCALE: 1"=20'



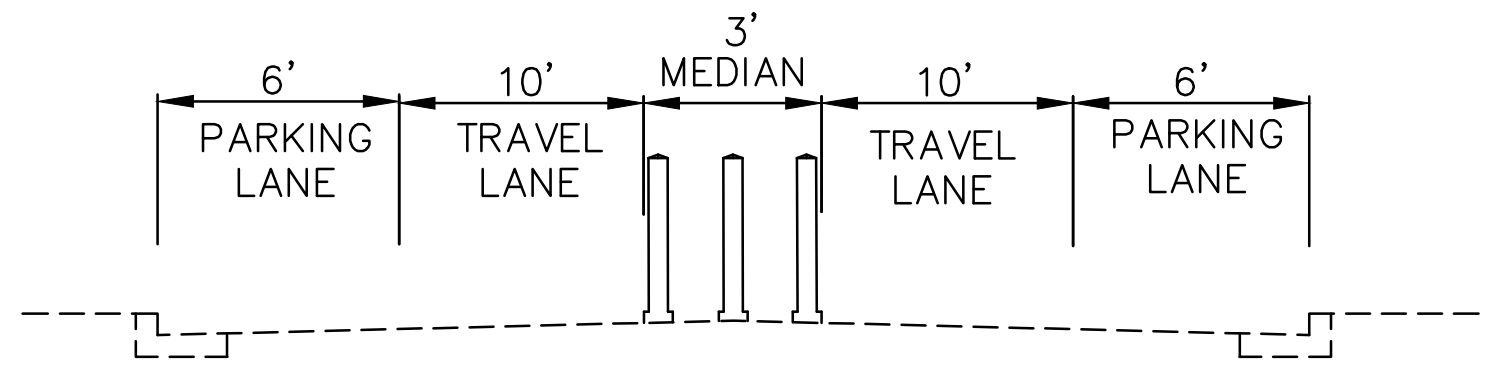
SECTION B-B  
NTS

E SAN FERNANDO ST



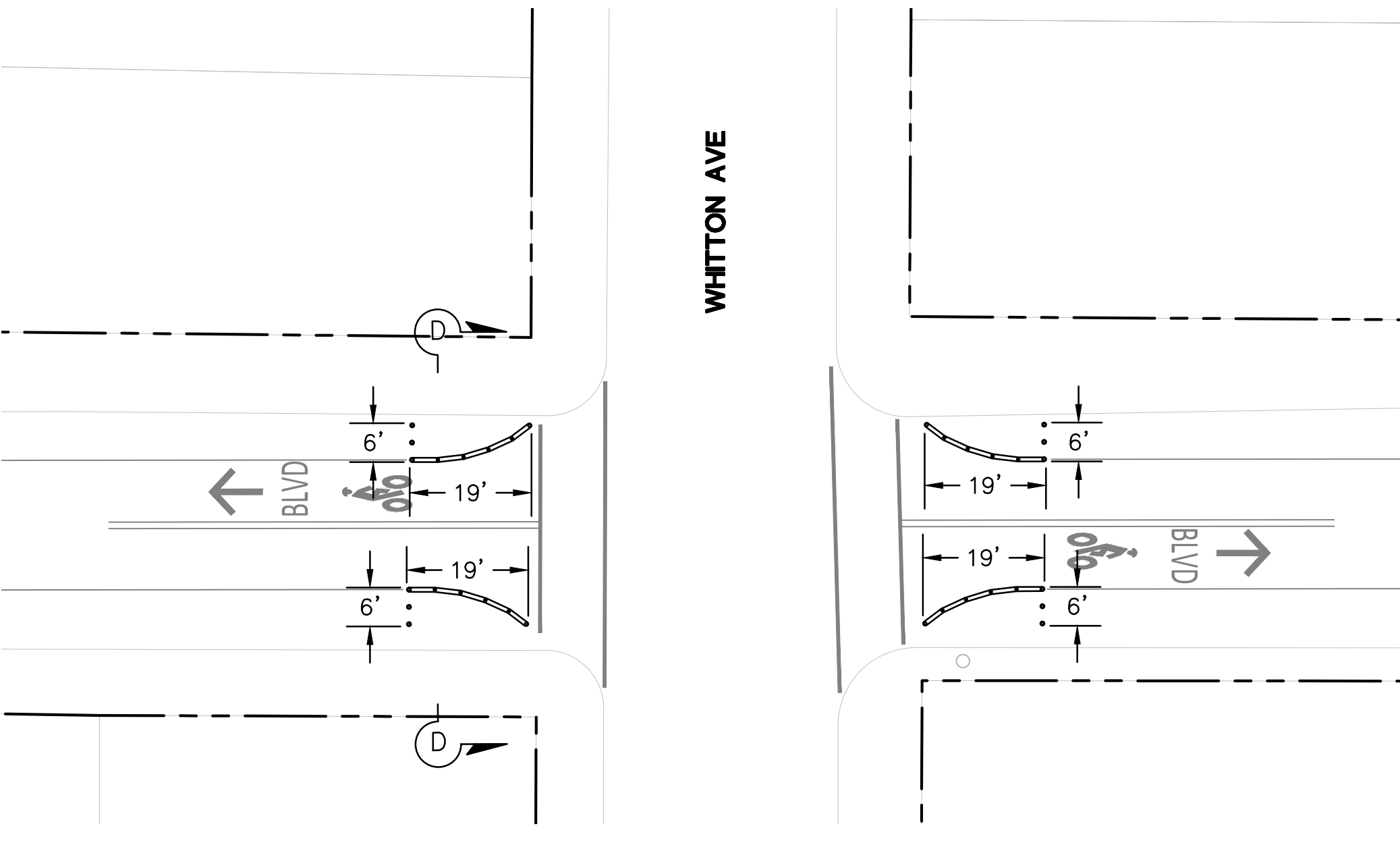
DETAIL 14

INTERSECTION LAYOUT - 28TH ST AND E. SAN FERNANDO ST  
SCALE: 1"=20'



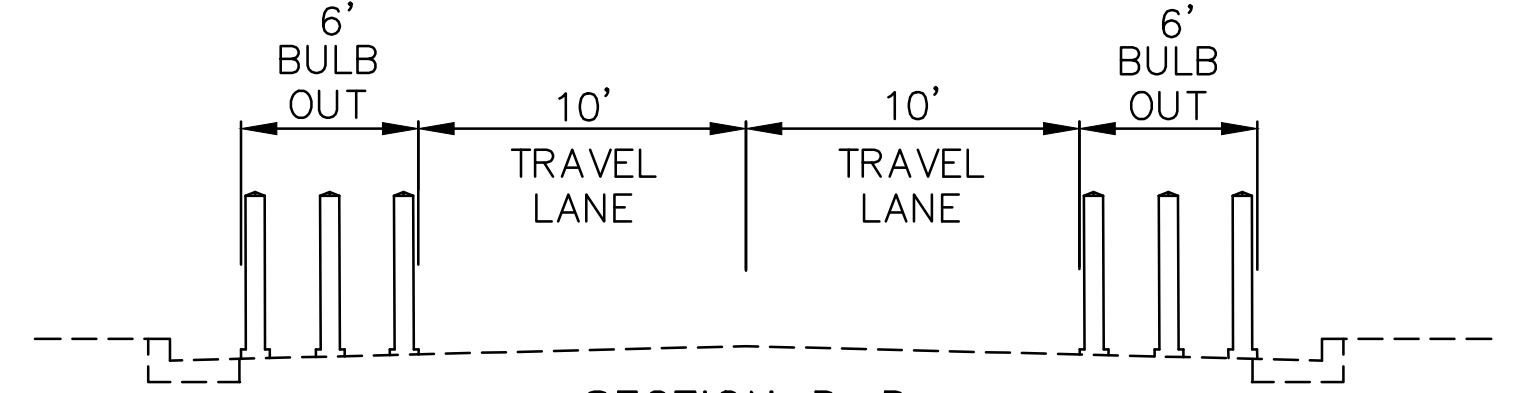
SECTION C-C  
NTS

WHITTON AVE



DETAIL 15

INTERSECTION LAYOUT - 28TH ST AND WHITTON AVE  
SCALE: 1"=20'



SECTION D-D  
NTS

Friday, June 17, 2022 7:00:39 PM

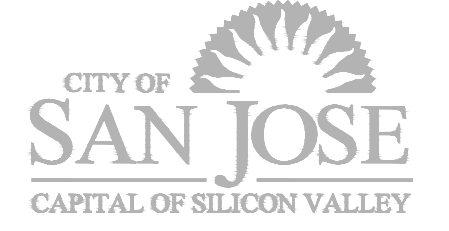
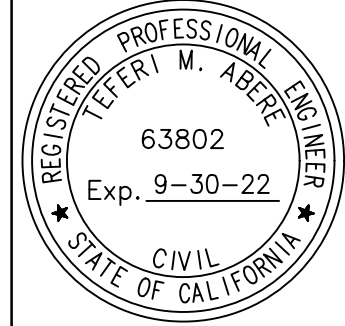


CITY OF SAN JOSE  
EN MOVIMENTO BICYCLE BOULEVARD  
28TH ST BETWEEN E SANTA CLARA ST & E SAN ANTONIO ST  
SIGNING AND STRIPING

7			
6			
5			
4			
3			
2			
1			
	REVISIONS	INITIALS	DATE

DEPT. OF PUBLIC WORKS	
MATERIALS LAB	
CONSTRUCTION	
SURVEY	
SANITARY	
STORM	
ELECTRICAL	
ROADS & BRIDGES	

DEPT. OF TRANSPORTATION	
TRAFFIC OPS.	
GEOMETRICS	
TRAFFIC SIGNAL OPS.	
MAINTENANCE	

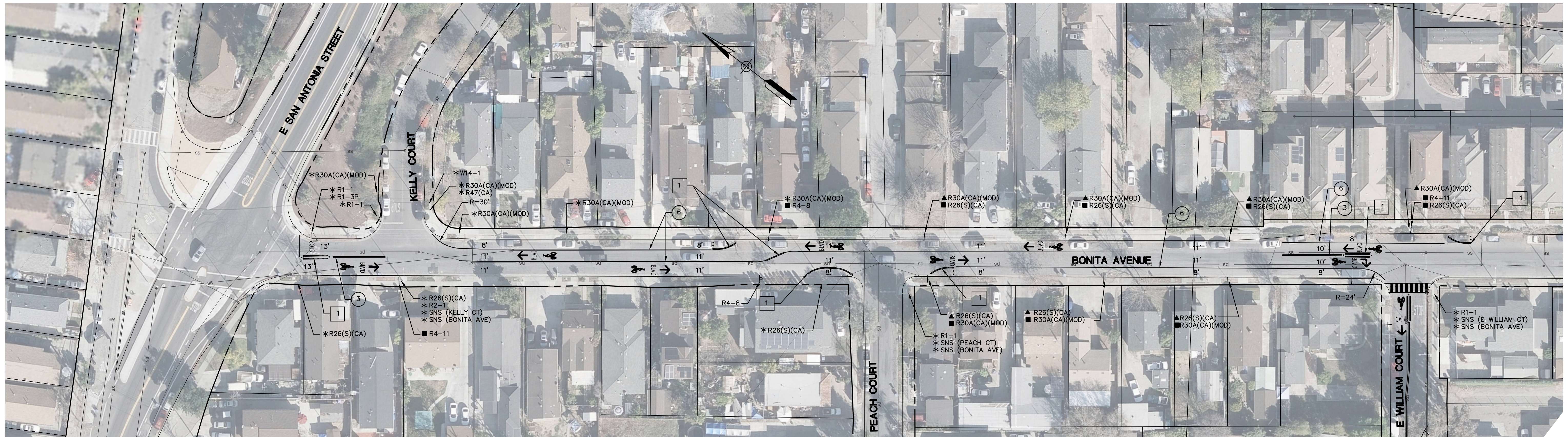


DEPARTMENT OF PUBLIC WORKS SAN JOSE, CALIFORNIA	
DESIGNED BY J. CHO	MATT CANO DIRECTOR OF PUBLIC WORKS
CHECKED BY T. ABERE	
PROJ MGR T. ABERE	
DATE 06/17/2022	
SCALE NOT TO SCALE	
SHEET NO. 19 OF 30 SHEETS	

Drawing: C:\users\Jordan Cho\Documents\37000\19-03-28th ST\_BONITA AVE-03-CD-01.dwg  
Jun 17, 2022, 7:00pm

**NOTE:**

- 1 INSTALL STATEWIDE FG 300 CURB SYSTEM WITH FLEXIBLE POSTS OR EQUAL AS APPROVED BY THE CITY OF SAN JOSE.



**STRIPING LEGEND**

STRIPING ELEMENT	STRIPING ELEMENT	STRIPING ELEMENT
① STATE DETAIL 9 (MOD, TYPE C MARKER)	⑩ STATE DETAIL 39	⑳ STATE DETAIL 40
② STATE DETAIL 12 (MOD, TYPE C MARKER)	⑪ STATE DETAIL 39A	㉑ BICYCLE LOOP DETECTOR SYMBOL
③ STATE DETAIL 22	⑫ RESERVED FOR FUTURE USE	㉒ STATE DETAIL 39A (MOD, 4" WIDE)
④ RESERVED FOR FUTURE USE	⑬ ARROWS / MESSAGES	㉓ YIELD LINE
⑤ STATE DETAIL 25	⑭ CHATTER BARS	㉔ GREEN PAVEMENT ENHANCEMENT
⑥ STATE DETAIL 27B	⑮ RESERVED FOR FUTURE USE	㉕ RESERVED FOR FUTURE USE
⑦ STATE DETAIL 29	⑯ SOLID 12" WHITE	㉖ SOLID 24" YELLOW
⑧ STATE DETAIL 32	⑰ SOLID 12" YELLOW	㉗ STATE DETAIL 41
⑨ STATE DETAIL 37B	⑱ SOLID 24" WHITE	㉘ RESERVED FOR FUTURE USE
⑩ STATE DETAIL 38	㉚ STATE DETAIL 26 (MOD, 24' SPC)	㉙ RESERVED FOR FUTURE USE

**BONITA AVE PARKING IMPACTS TABLE**

PARKING SPACES LOST	20
PARKING SPACES GAINED	10
NET TOTAL (LOSS)	10

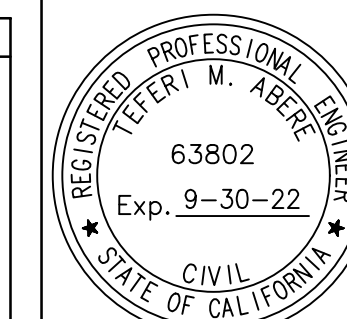


**CITY OF SAN JOSE**  
**EN MOVIMENTO BICYCLE BOULEVARD**  
**BONITA AVE BETWEEN E. SAN ANTONIO ST & E. WILLIAM CT**  
**SIGNING AND STRIPING**

REVISIONS	INITIALS	DATE
7		
6		
5		
4		
3		
2		
1		

DEPT. OF PUBLIC WORKS  
 MATERIALS LAB \_\_\_\_\_  
 CONSTRUCTION \_\_\_\_\_  
 SURVEY \_\_\_\_\_  
 SANITARY \_\_\_\_\_  
 STORM \_\_\_\_\_  
 ELECTRICAL \_\_\_\_\_  
 ROADS & BRIDGES \_\_\_\_\_

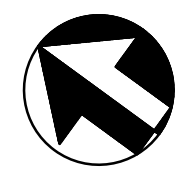
DEPT. OF TRANSPORTATION  
 TRAFFIC OPS. \_\_\_\_\_  
 GEOMETRICS \_\_\_\_\_  
 TRAFFIC SIGNAL OPS. \_\_\_\_\_  
 MAINTENANCE \_\_\_\_\_



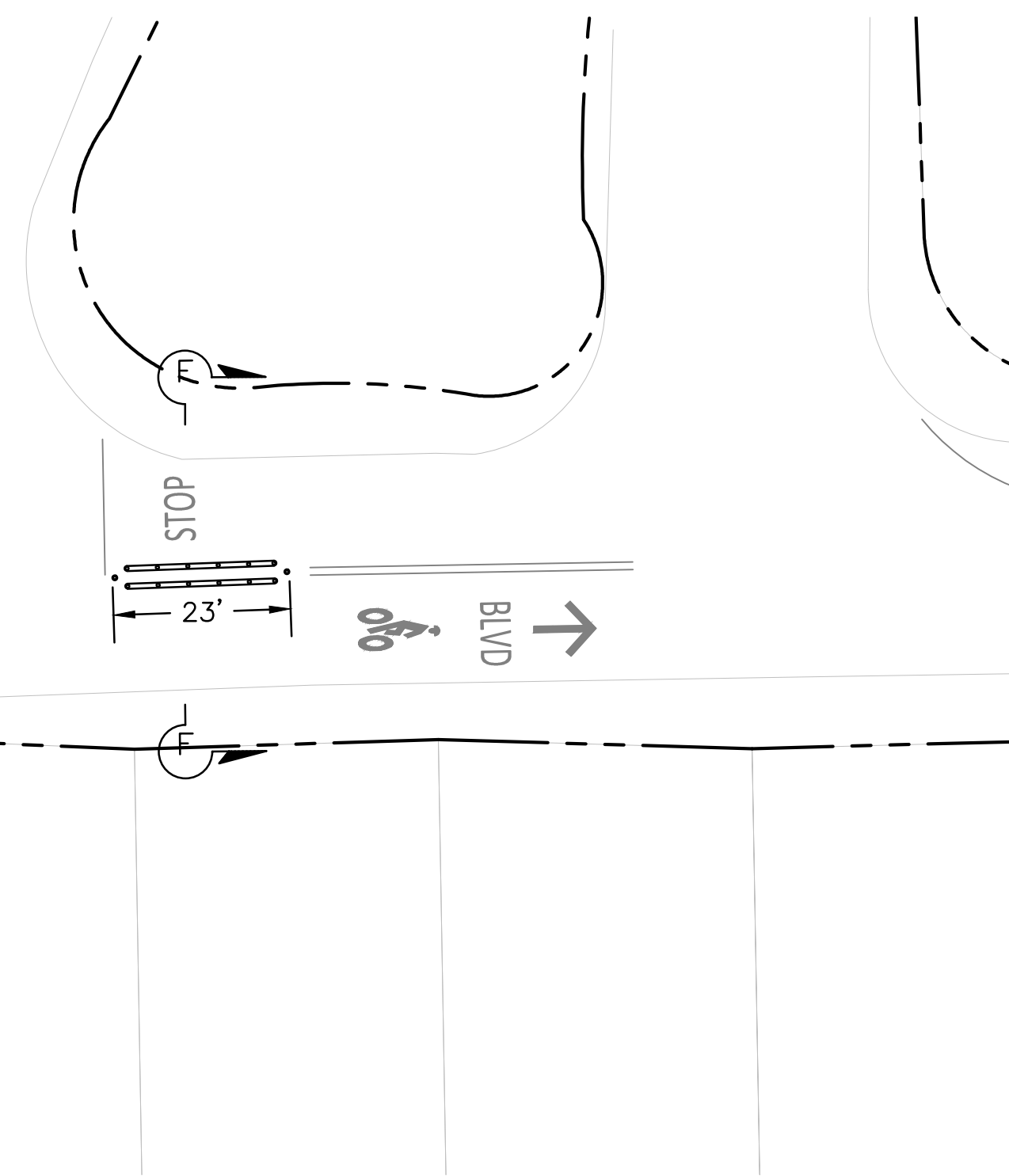
**DEPARTMENT OF PUBLIC WORKS**  
**SAN JOSE, CALIFORNIA**

DESIGNED BY J. CHO  
 CHECKED BY T. ABERE  
 PROJ MGR T. ABERE  
 DATE 06/17/2022  
 SCALE 1" = 40'  
 SHEET NO. 7 OF 30 SHEETS

MATT CANO  
 DIRECTOR OF PUBLIC WORKS

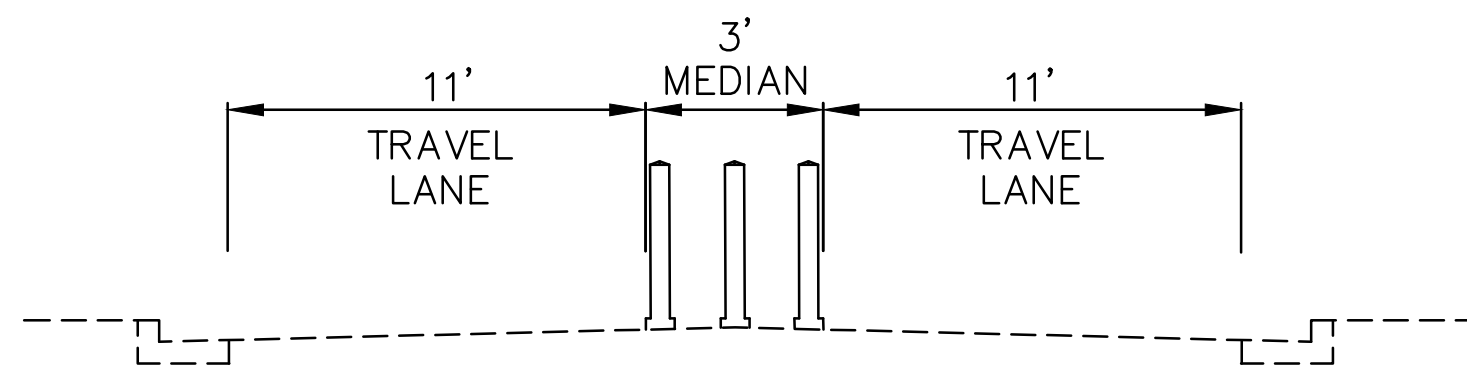


E. SAN ANTONIO ST

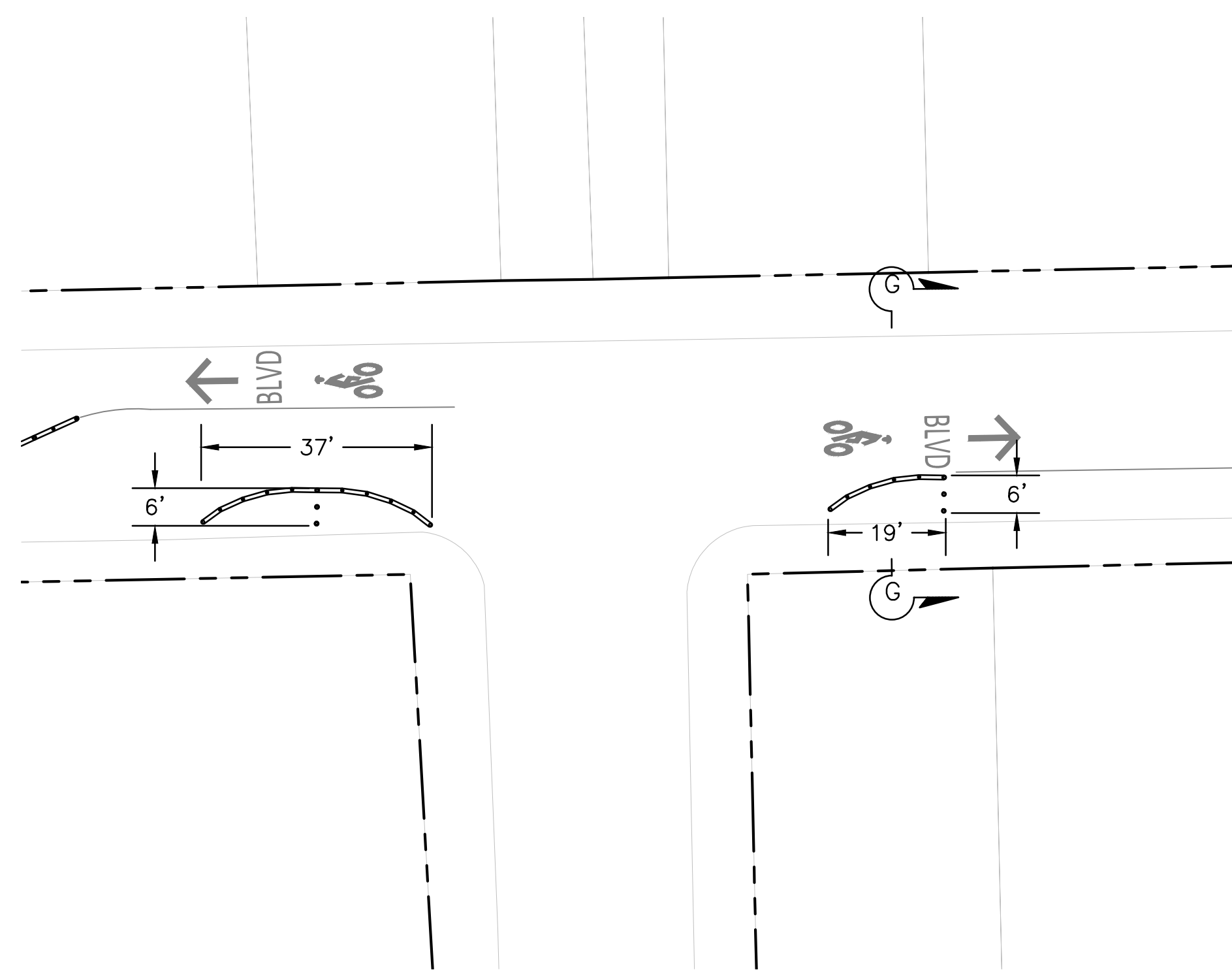


DETAIL 16

INTERSECTION LAYOUT - BONITA AVE AND E. SAN ANTONIO ST  
SCALE: 1"=20'

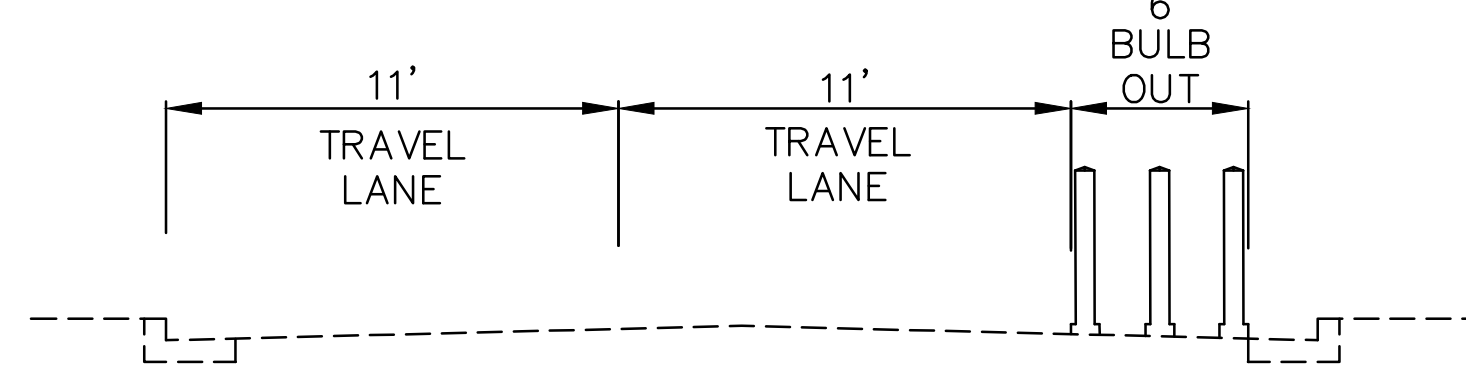


SECTION F-F  
NTS

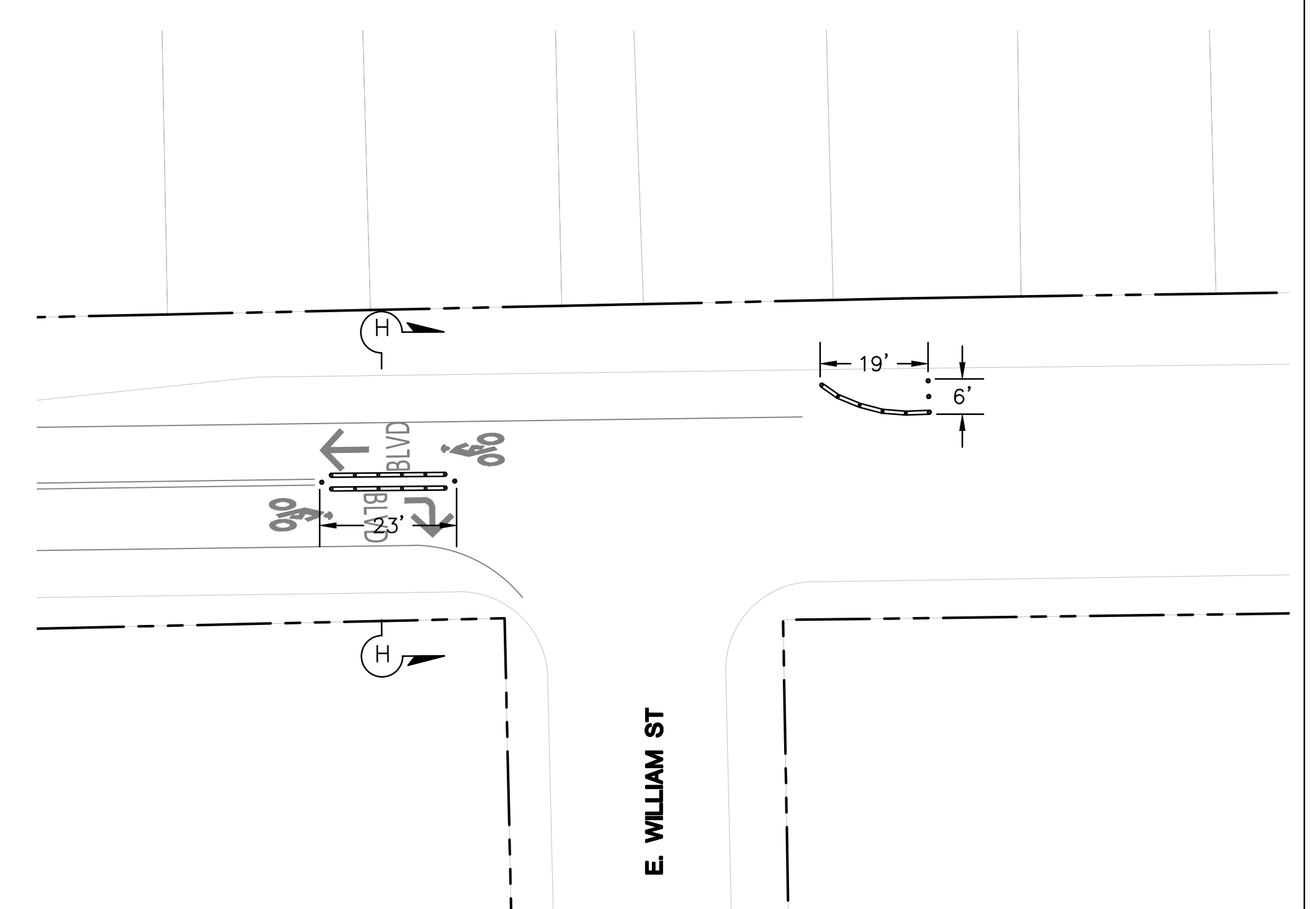


DETAIL 17

INTERSECTION LAYOUT - BONITA AVE AND PEACH CT  
SCALE: 1"=20'

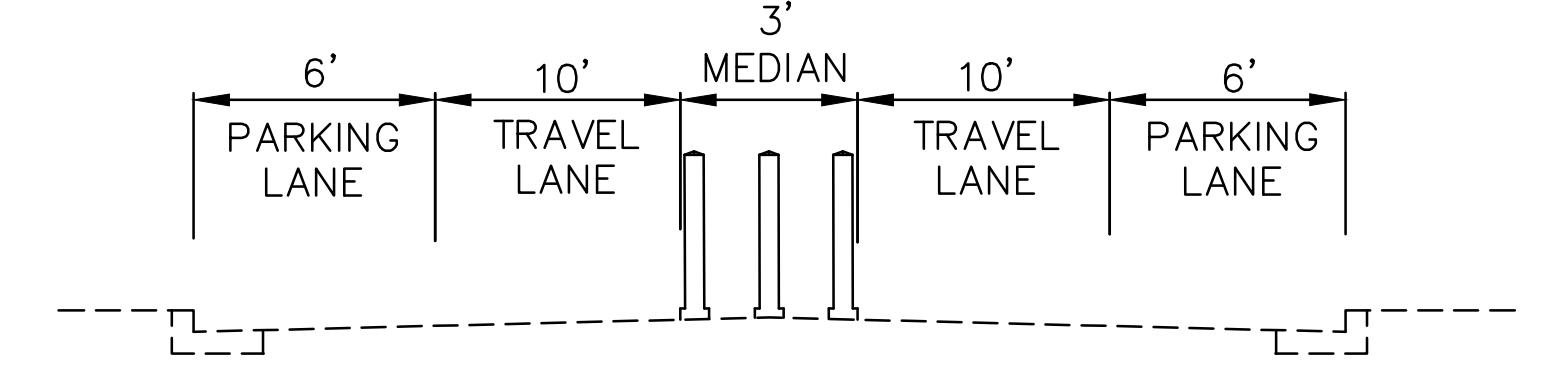


SECTION G-G  
NTS



DETAIL 18

INTERSECTION LAYOUT - BONITA AVE AND E. WILLIAM ST  
SCALE: 1"=20'



SECTION H-H  
NTS

Friday, June 17, 2022 7:05:15 PM

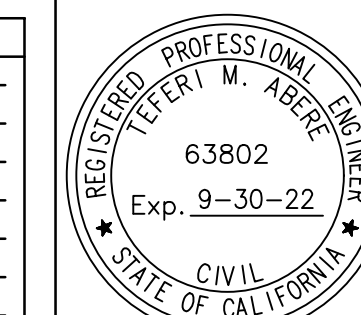


CITY OF SAN JOSE  
EN MOVIMENTO BICYCLE BOULEVARD  
BONITA AVE BETWEEN E SAN ANTONIO ST & E WILLIAM CT  
SIGNING AND STRIPING

NO.	REVISIONS	INITIALS	DATE
7			
6			
5			
4			
3			
2			
1			

DEPT. OF PUBLIC WORKS	
MATERIALS LAB	
CONSTRUCTION	
SURVEY	
SANITARY	
STORM	
ELECTRICAL	
ROADS & BRIDGES	

DEPT. OF TRANSPORTATION	
TRAFFIC OPS.	
GEOMETRICS	
TRAFFIC SIGNAL OPS.	
MAINTENANCE	



DEPARTMENT OF PUBLIC WORKS SAN JOSE, CALIFORNIA	
DESIGNED BY J. CHO	MATT CANO DIRECTOR OF PUBLIC WORKS
CHECKED BY T. ABERE	
PROJ MGR T. ABERE	
DATE 06/17/2022	
SCALE NOT TO SCALE	
SHEET NO. 20 OF 30 SHEETS	

Drawing: C:\Users\jchoe0539\dms37000\20-03-28th ST\_BONITA\_AVE-04-CD-02.dwg  
Jun 17, 2022, 7:05pm