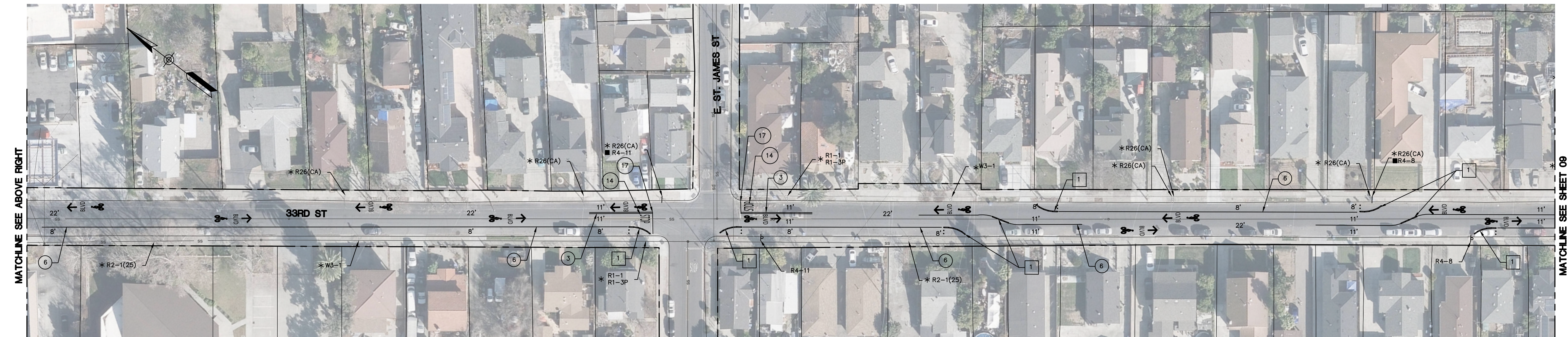
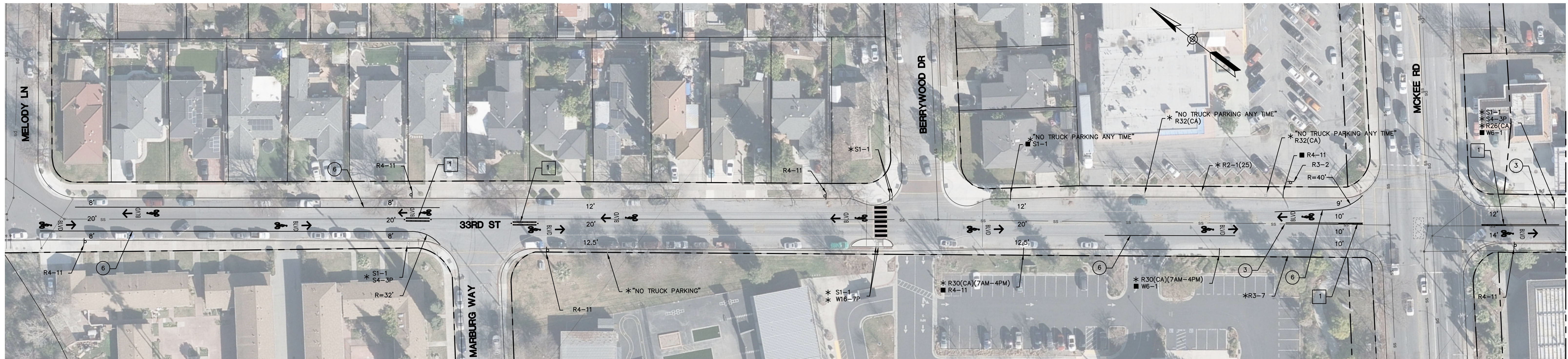


NOTE:

1 INSTALL STATEWIDE FG 300 CURB SYSTEM WITH FLEXIBLE POSTS OR EQUAL AS APPROVED BY THE CITY OF SAN JOSE.



STRIPING LEGEND		
STRIPING ELEMENT	STRIPING ELEMENT	STRIPING ELEMENT
① STATE DETAIL 9 (MOD, TYPE C MARKER)	⑩ STATE DETAIL 39	⑳ STATE DETAIL 40
② STATE DETAIL 12 (MOD, TYPE C MARKER)	⑪ STATE DETAIL 39A	㉑ BICYCLE LOOP DETECTOR SYMBOL
③ STATE DETAIL 22	⑫ RESERVED FOR FUTURE USE	㉒ STATE DETAIL 39A (MOD, 4" WIDE)
④ RESERVED FOR FUTURE USE	⑬ ARROWS / MESSAGES	㉓ YIELD LINE
⑤ STATE DETAIL 25	⑭ CHATTER BARS	㉔ GREEN PAVEMENT ENHANCEMENT
⑥ STATE DETAIL 27B	⑮ RESERVED FOR FUTURE USE	㉕ RESERVED FOR FUTURE USE
⑦ STATE DETAIL 29	⑯ SOLID 12" WHITE	㉖ SOLID 24" YELLOW
⑧ STATE DETAIL 32	⑰ SOLID 12" YELLOW	㉗ STATE DETAIL 41
⑨ STATE DETAIL 37B	⑱ SOLID 24" WHITE	㉘ RESERVED FOR FUTURE USE
⑩ STATE DETAIL 38	㉚ STATE DETAIL 26 (MOD, 24' SPC)	㉙ RESERVED FOR FUTURE USE

33RD STREET BETWEEN MELODY LN AND ALUM ROCK AVE PARKING IMPACTS TABLE

PARKING SPACES LOST	21
PARKING SPACES GAINED	8
NET TOTAL (LOSS)	13

REVISIONS	INITIALS	DATE
7		
6		
5		
4		
3		
2		
1		

DEPT. OF PUBLIC WORKS
MATERIALS LAB _____
CONSTRUCTION _____
SURVEY _____
SANITARY _____
STORM _____
ELECTRICAL _____
ROADS & BRIDGES _____

DEPT. OF TRANSPORTATION
TRAFFIC OPS. _____
GEOMETRICS _____
TRAFFIC SIGNAL OPS. _____
MAINTENANCE _____



DEPARTMENT OF PUBLIC WORKS SAN JOSE, CALIFORNIA	
DESIGNED BY J. CHO	MATT CANO DIRECTOR OF PUBLIC WORKS
CHECKED BY T. ABERE	
PROJ MGR T. ABERE	
DATE 06/17/2022	
SCALE 1" = 40'	
SHEET NO. 8 OF 30 SHEETS	

Friday, June 17, 2022 2:14:58 PM

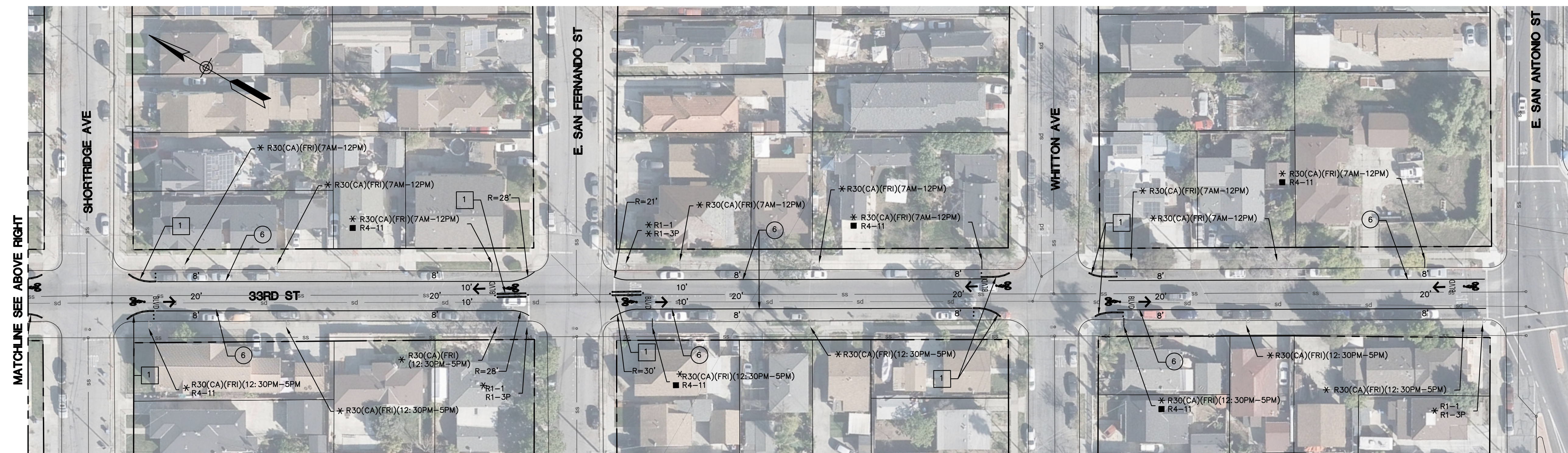
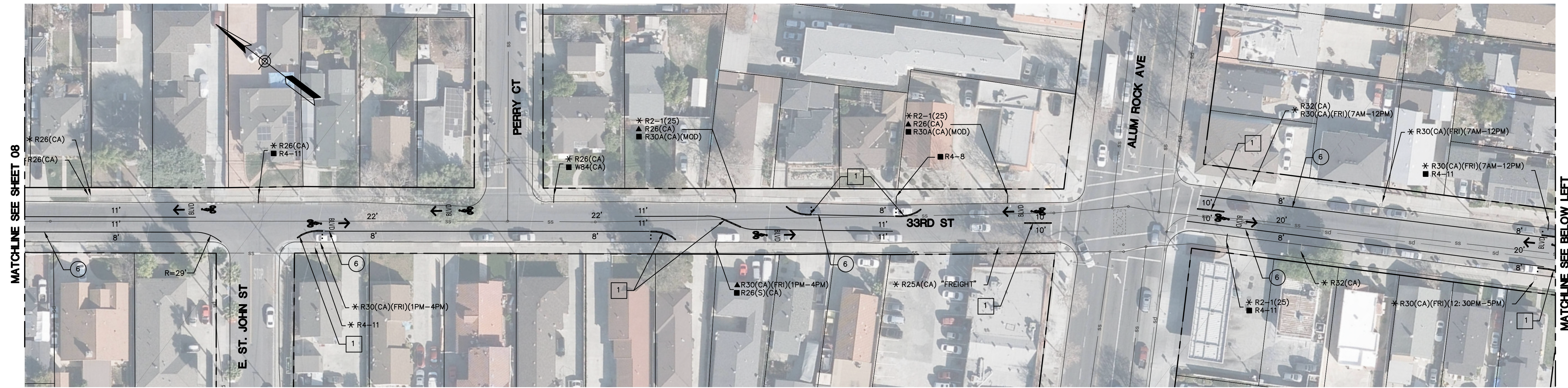


CITY OF SAN JOSE
EN MOVIMENTO BICYCLE BOULEVARD
33RD ST BETWEEN MELODY LN TO E. SAN ANTONIO ST
SIGNING AND STRIPING

Drawing: C:\Users\jchoe0539\dms37000\08-04-33rd ST-01-SS-01.dwg Jun 17, 2022, 2:14pm

NOTE:

1 INSTALL STATEWIDE FG 300 CURB SYSTEM WITH FLEXIBLE POSTS OR EQUAL AS APPROVED BY THE CITY OF SAN JOSE.



STRIPING LEGEND

STRIPING ELEMENT	STRIPING ELEMENT	STRIPING ELEMENT
① STATE DETAIL 9 (MOD, TYPE C MARKER)	⑩ STATE DETAIL 39	⑳ STATE DETAIL 40
② STATE DETAIL 12 (MOD, TYPE C MARKER)	⑪ STATE DETAIL 39A	㉑ BICYCLE LOOP DETECTOR SYMBOL
③ STATE DETAIL 22	⑫ RESERVED FOR FUTURE USE	㉒ STATE DETAIL 39A (MOD, 4" WIDE)
④ RESERVED FOR FUTURE USE	⑬ ARROWS / MESSAGES	㉓ YIELD LINE
⑤ STATE DETAIL 25	⑭ CHATTER BARS	㉔ GREEN PAVEMENT ENHANCEMENT
⑥ STATE DETAIL 27B	⑮ RESERVED FOR FUTURE USE	㉕ RESERVED FOR FUTURE USE
⑦ STATE DETAIL 29	⑯ SOLID 12" WHITE	㉖ SOLID 24" YELLOW
⑧ STATE DETAIL 32	⑰ SOLID 12" YELLOW	㉗ STATE DETAIL 41
⑨ STATE DETAIL 37B	⑱ SOLID 24" WHITE	㉘ RESERVED FOR FUTURE USE
⑩ STATE DETAIL 38	㉚ STATE DETAIL 26 (MOD, 24' SPC)	㉙ RESERVED FOR FUTURE USE

**33RD STREET BETWEEN ALUM ROCK AVE AND E. SAN ANTONIO ST
PARKING IMPACTS TABLE**

PARKING SPACES LOST	0
PARKING SPACES GAINED	0
NET TOTAL (LOSS)	0

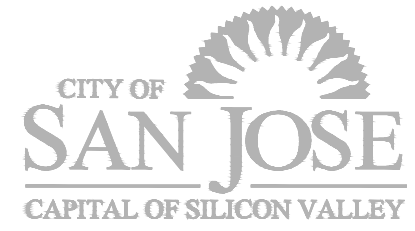


**CITY OF SAN JOSE
EN MOVIMENTO BICYCLE BOULEVARD
33RD ST BETWEEN MELODY LN TO E. SAN ANTONIO ST
SIGNING AND STRIPING**

REVISIONS	INITIALS	DATE
7		
6		
5		
4		
3		
2		
1		

DEPT. OF PUBLIC WORKS
MATERIALS LAB _____
CONSTRUCTION _____
SURVEY _____
SANITARY _____
STORM _____
ELECTRICAL _____
ROADS & BRIDGES _____

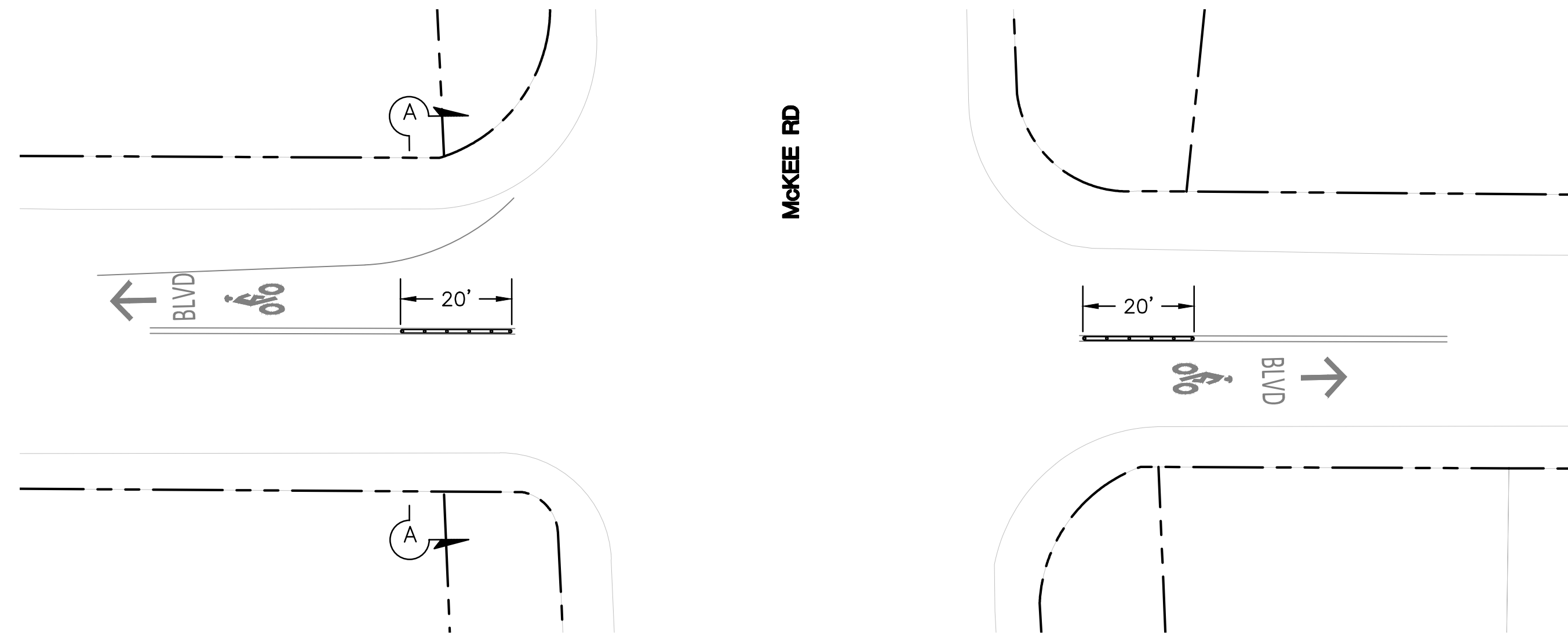
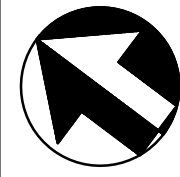
DEPT. OF TRANSPORTATION
TRAFFIC OPS. _____
GEOMETRICS _____
TRAFFIC SIGNAL OPS. _____
MAINTENANCE _____



DEPARTMENT OF PUBLIC WORKS
SAN JOSE, CALIFORNIA
DESIGNED BY J. CHO
CHECKED BY T. ABERE
PROJ MGR T. ABERE
DATE 06/17/2022
SCALE 1" = 40'
SHEET NO. 9 OF 30 SHEETS
MATT CANO
DIRECTOR OF PUBLIC WORKS

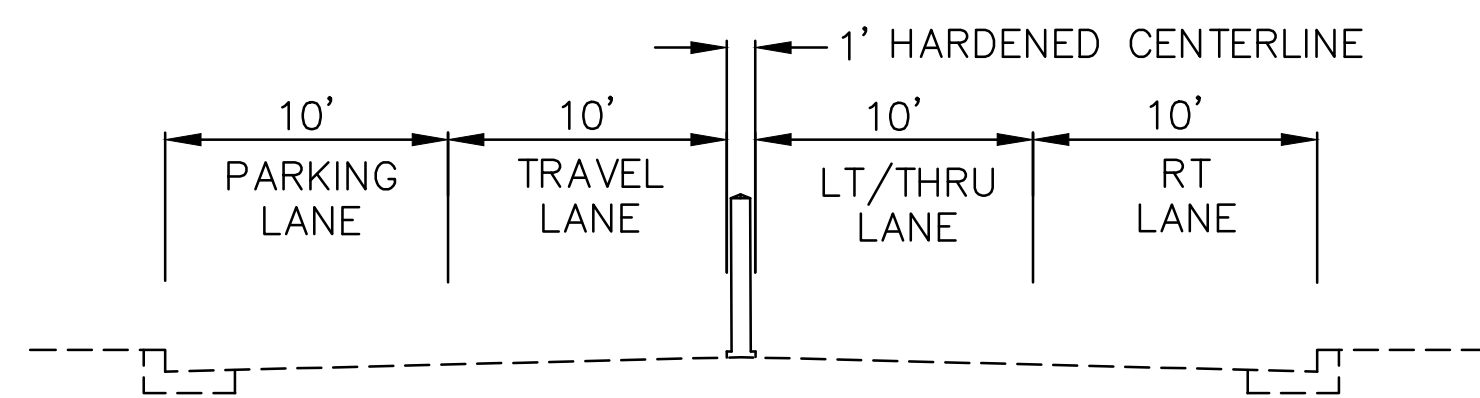
Friday, June 17, 2022 2:16:38 PM

Drawing: C:\Users\jchoe0539\dms37000\09-04-33rd ST-02-SS-02.dwg Jun 17, 2022, 2:16pm

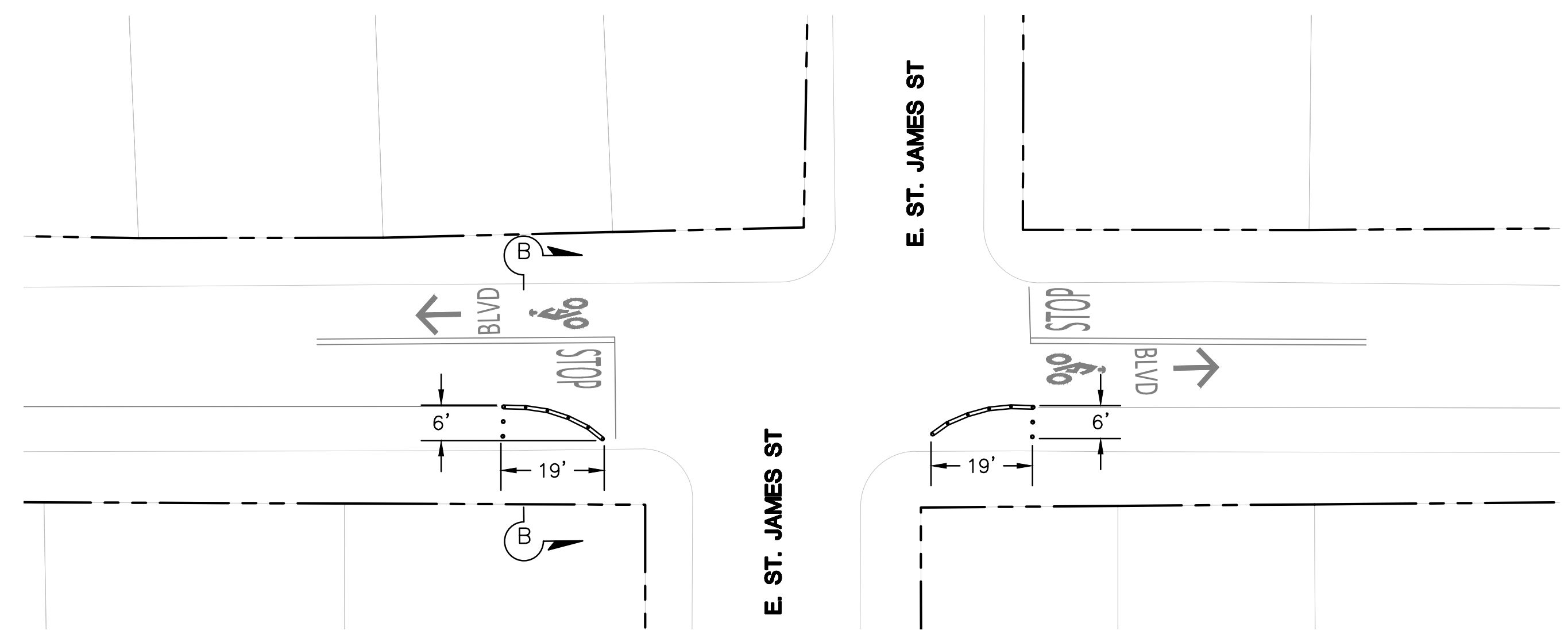


DETAIL 19

INTERSECTION LAYOUT - 33RD ST AND MCKEE RD
SCALE: 1"=20'

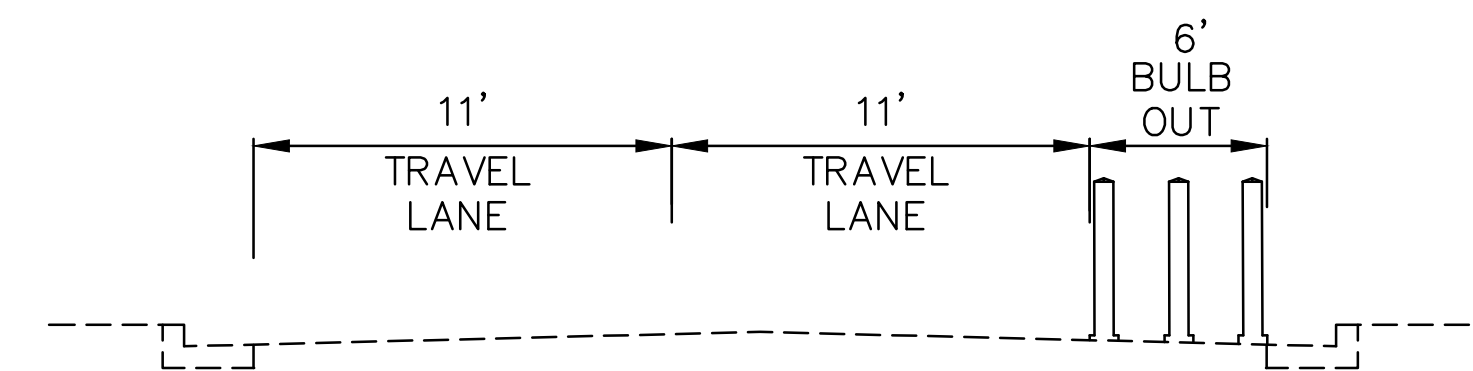


SECTION A-A
NTS

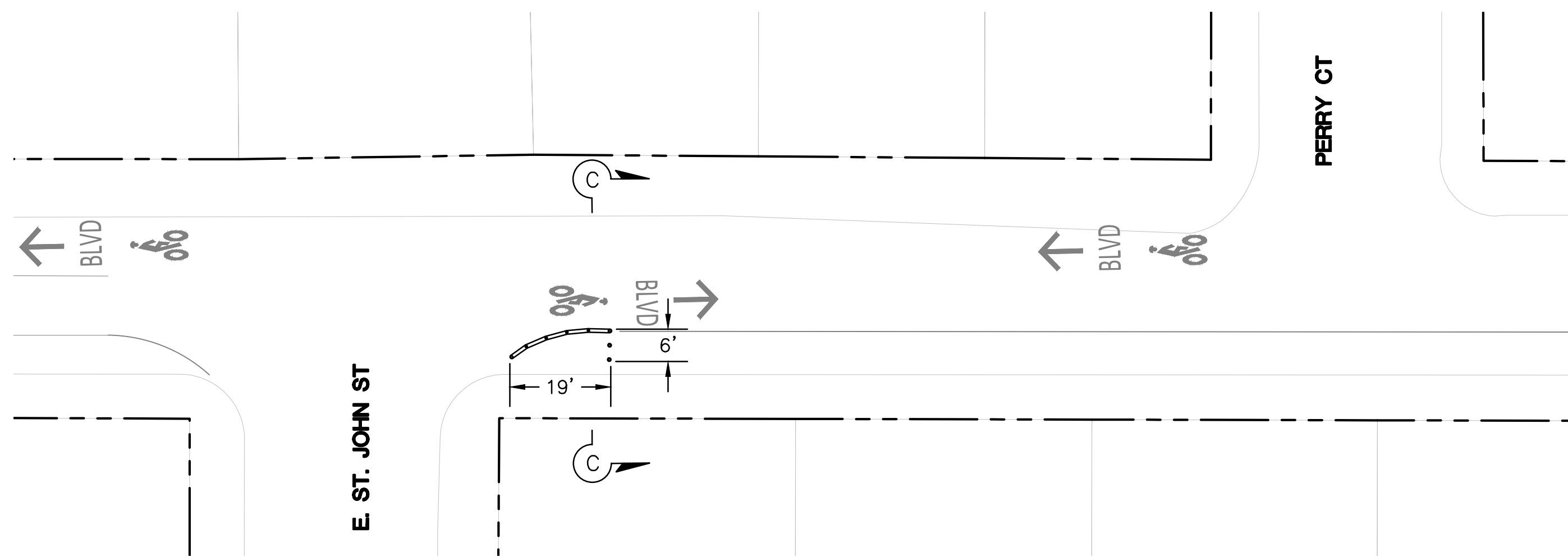


DETAIL 20

INTERSECTION LAYOUT - 33RD ST AND E. ST. JAMES ST
SCALE: 1"=20'

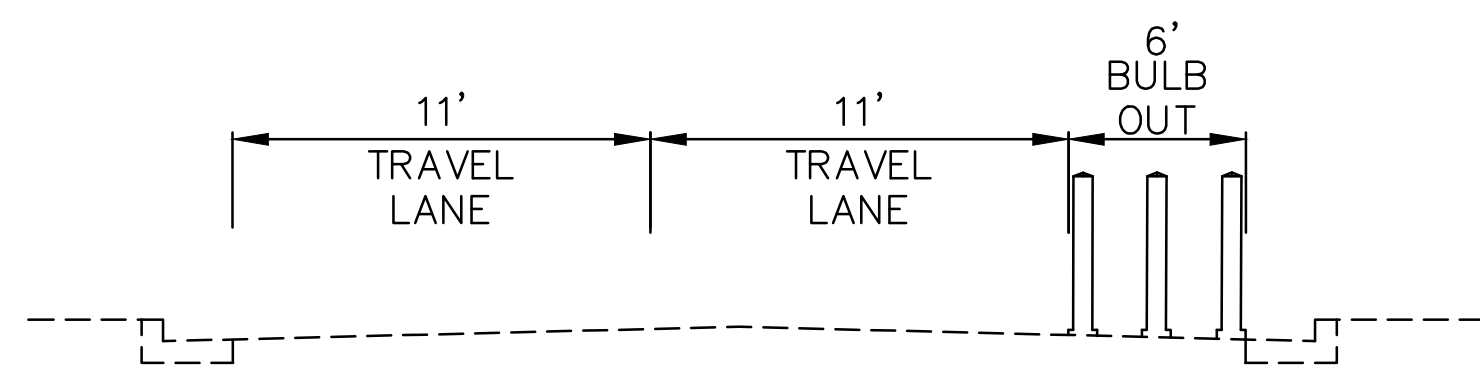


SECTION B-B
NTS

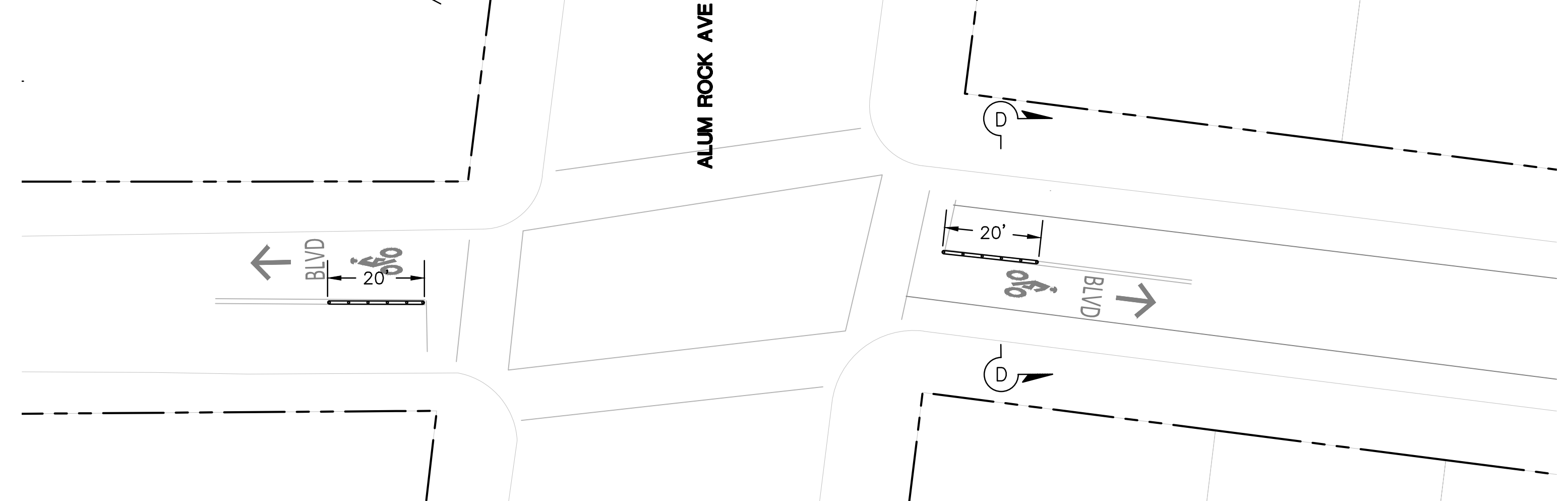


DETAIL 21

INTERSECTION LAYOUT - 33RD ST AND E. ST. JOHN ST
SCALE: 1"=20'

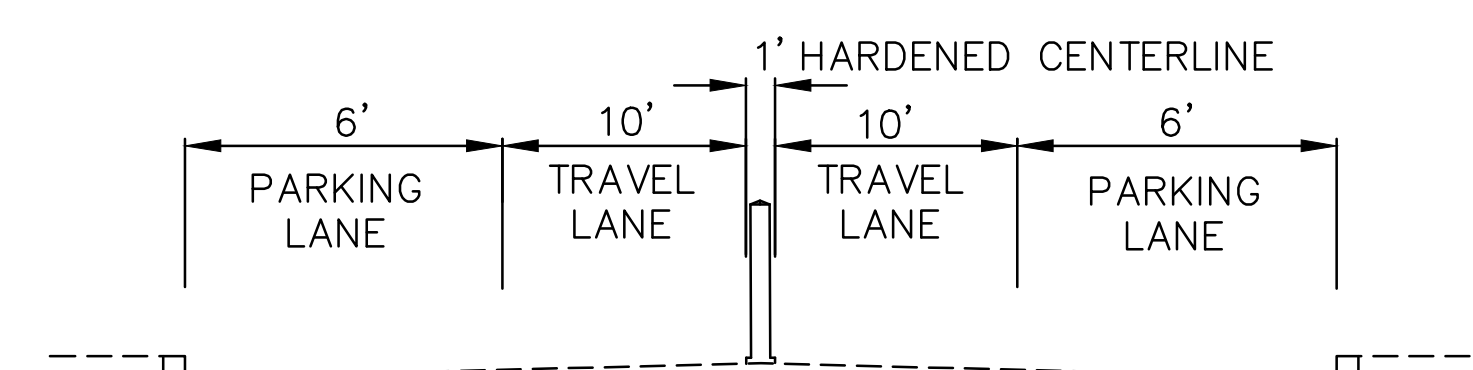


SECTION C-C
NTS



DETAIL 22

INTERSECTION LAYOUT - 33RD ST AND ALUM ROCK AVE
SCALE: 1"=20'



SECTION D-D
NTS

Friday, June 17, 2022 7:09:21 PM

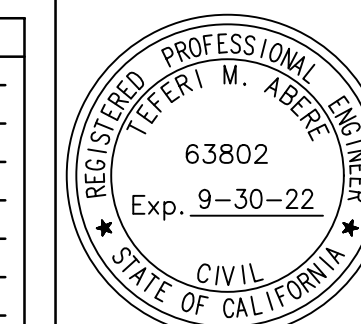


CITY OF SAN JOSE
EN MOVIMENTO BICYCLE BOULEVARD
33RD ST BETWEEN MELODY LN TO E. SAN ANTONIO ST
CONSTRUCTION DETAILS

7			
6			
5			
4			
3			
2			
1			
	REVISIONS	INITIALS	DATE

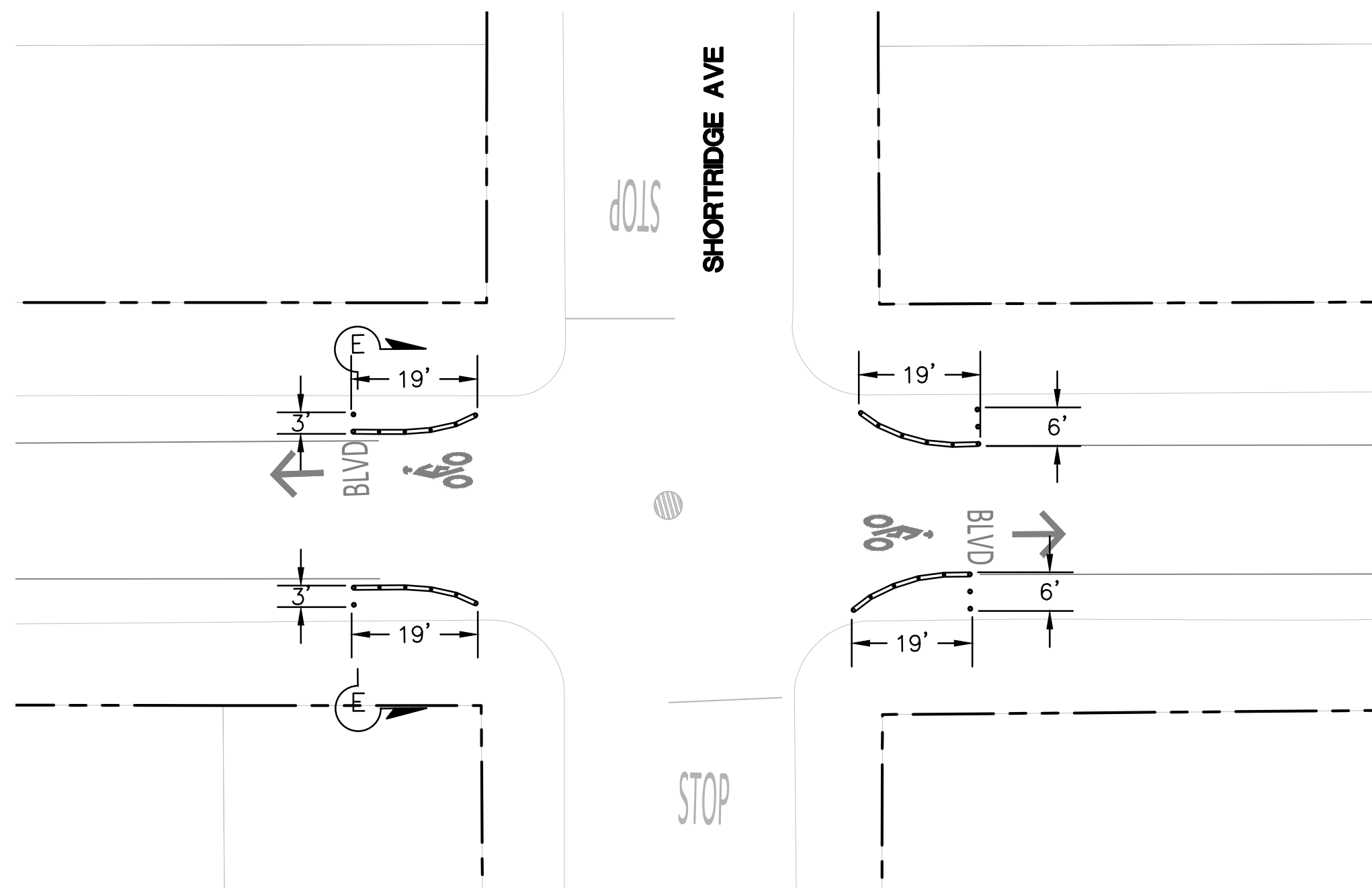
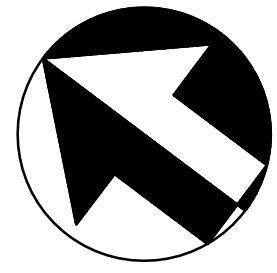
DEPT. OF PUBLIC WORKS
MATERIALS LAB _____
CONSTRUCTION _____
SURVEY _____
SANITARY _____
STORM _____
ELECTRICAL _____
ROADS & BRIDGES _____

DEPT. OF TRANSPORTATION
TRAFFIC OPS. _____
GEOMETRICS _____
TRAFFIC SIGNAL OPS. _____
MAINTENANCE _____



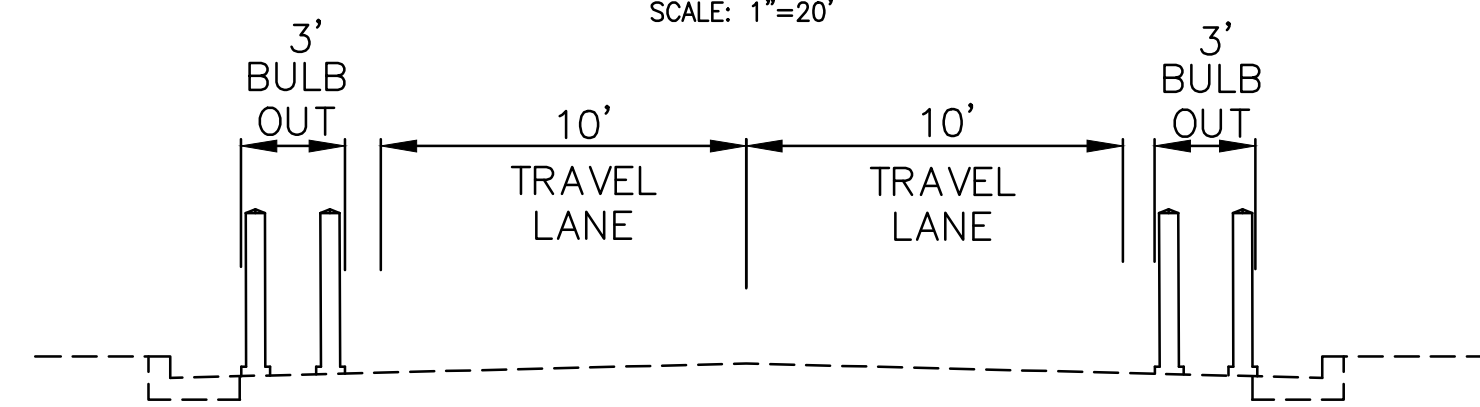
DEPARTMENT OF PUBLIC WORKS SAN JOSE, CALIFORNIA	
DESIGNED BY J. CHO	MATT CANO DIRECTOR OF PUBLIC WORKS
CHECKED BY T. ABERE	
PROJ MGR T. ABERE	
DATE 06/17/2022	
SCALE NOT TO SCALE	
SHEET NO. 21 OF 30 SHEETS	

Drawing: C:\Users\jchoe0539\dms37000\21-04-33rd ST-05-C0-01.dwg
Jun 17, 2022, 7:09pm

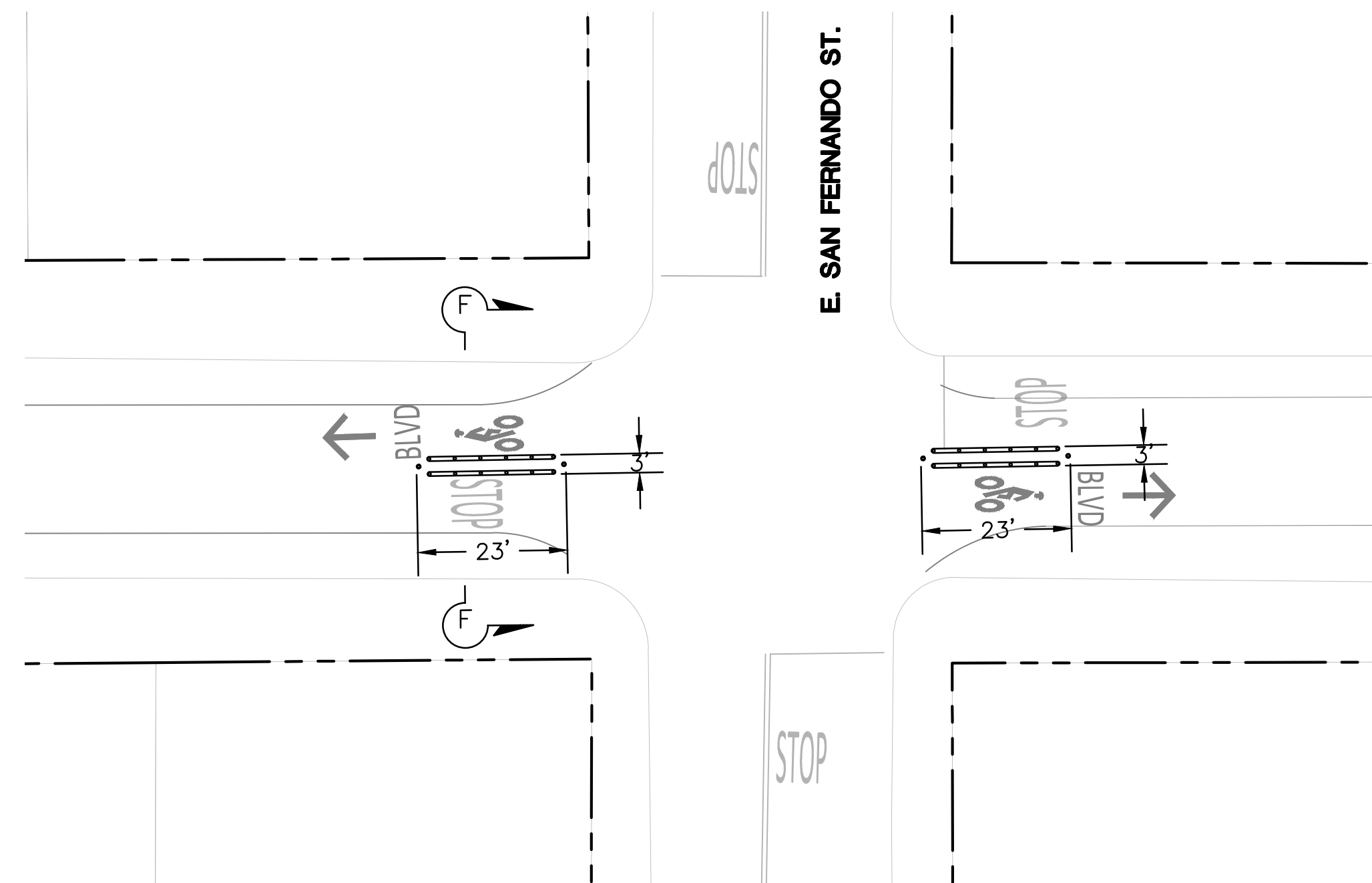


DETAIL 23

INTERSECTION LAYOUT - 33RD ST AND SHORTRIDGE AVE
SCALE: 1"=20'

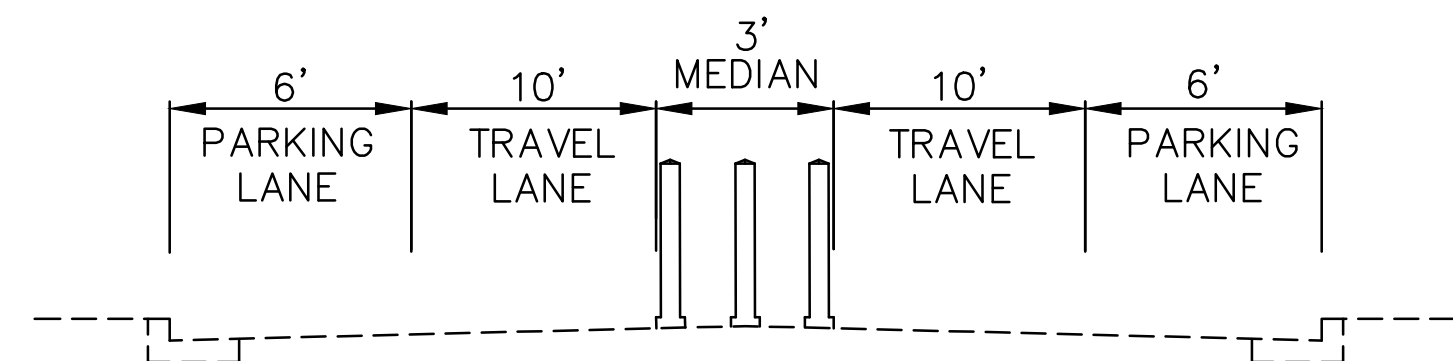


SECTION E-E
NTS

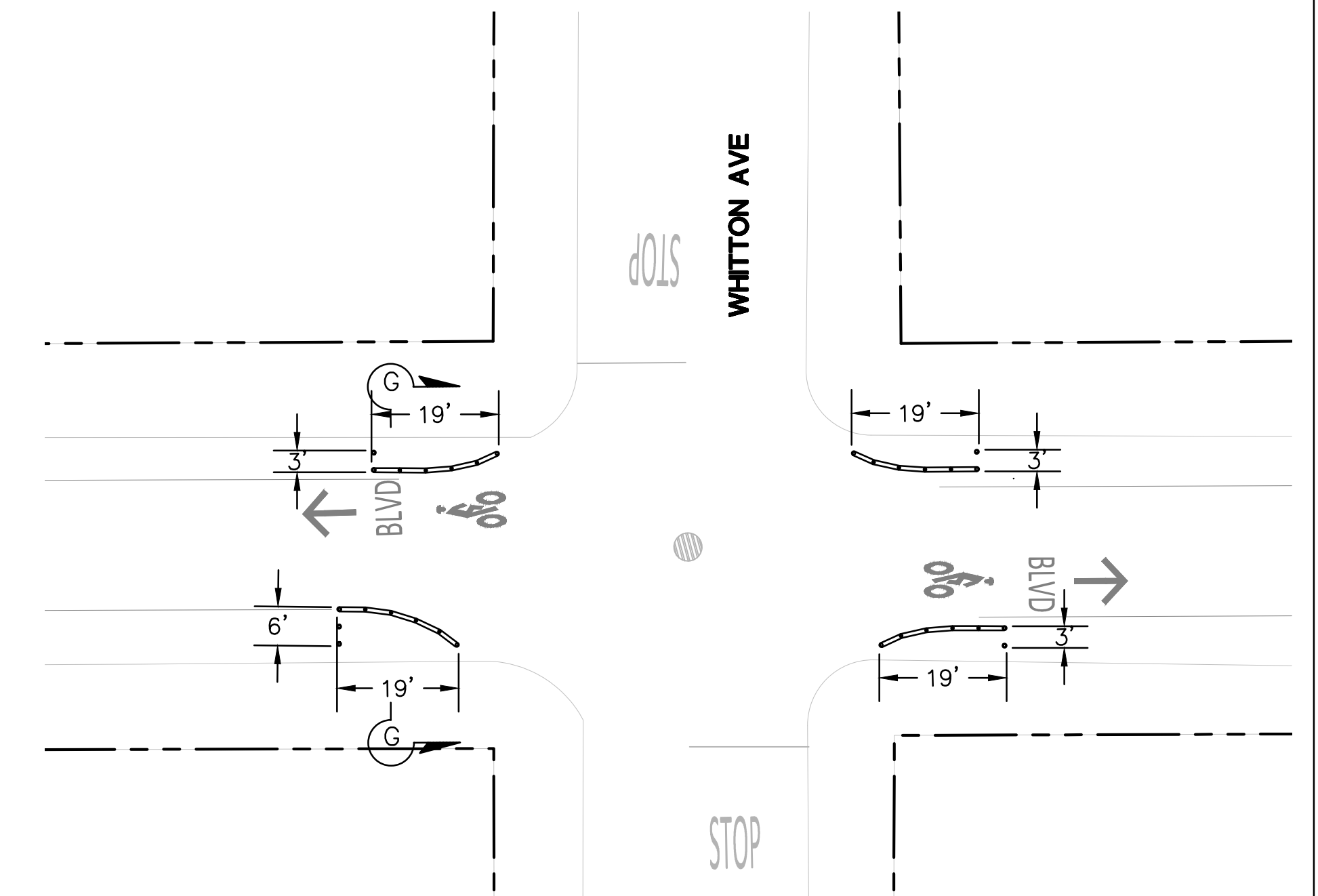


DETAIL 24

INTERSECTION LAYOUT - 33RD ST AND E. SAN FERNANDO ST
SCALE: 1"=20'

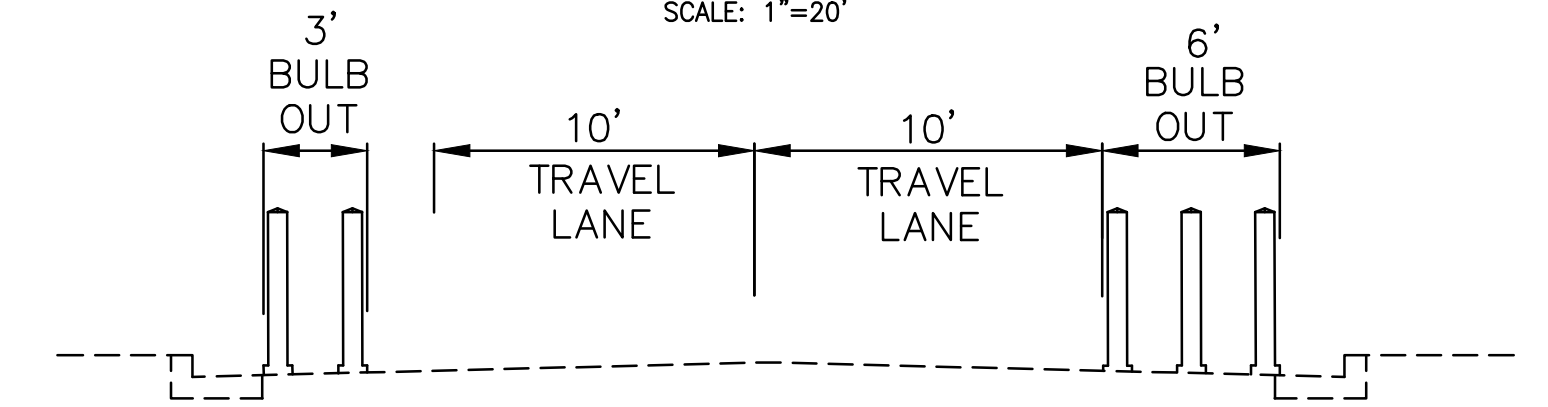


SECTION F-F
NTS



DETAIL 25

INTERSECTION LAYOUT - 33RD ST AND WHITTON AVE
SCALE: 1"=20'



SECTION G-G
NTS

Friday, June 17, 2022 7:12:30 PM
..... Jordan Cho

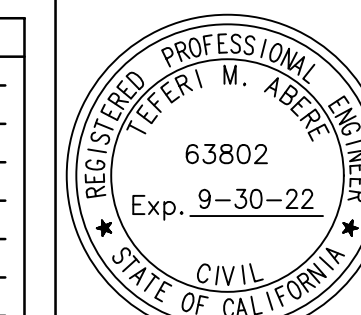


CITY OF SAN JOSE
EN MOVIMIENTO BICYCLE BOULEVARD
33RD ST BETWEEN MELODY LN TO E. SAN ANTONIO ST
CONSTRUCTION DETAILS

7			
6			
5			
4			
3			
2			
1			
	REVISIONS	INITIALS	DATE

DEPT. OF PUBLIC WORKS
MATERIALS LAB _____
CONSTRUCTION _____
SURVEY _____
SANITARY _____
STORM _____
ELECTRICAL _____
ROADS & BRIDGES _____

DEPT. OF TRANSPORTATION
TRAFFIC OPS. _____
GEOMETRICS _____
TRAFFIC SIGNAL OPS. _____
MAINTENANCE _____



DEPARTMENT OF PUBLIC WORKS SAN JOSE, CALIFORNIA	
DESIGNED BY J. CHO _____	MATT CANO DIRECTOR OF PUBLIC WORKS
CHECKED BY T. ABERE _____	
PROJ MGR T. ABERE _____	
DATE 06/17/2022	
SCALE NOT TO SCALE	
SHEET NO. 22 OF 30 SHEETS	

Drawing: C:\Users\jchoe0539\dms37000\22-04-04-33rd ST-04-C0-02.dwg
Jun 17, 2022, 7:12pm