

SJ



**DOWNTOWN  
TRANSPORTATION PLAN**

**SPUR Forum**  
Lend Your Voice to  
Shape Downtown's  
Transportation Future

**Wilson Tam and Eric Eidlin**  
**April 14, 2022**



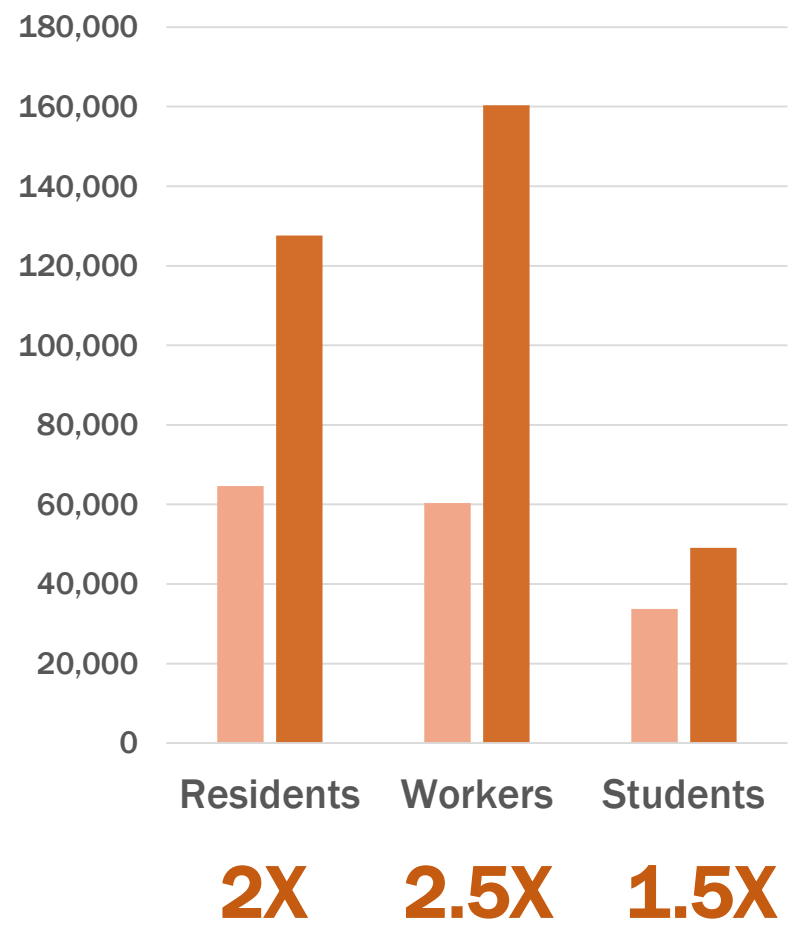
# Agenda

- **Downtown Transportation Plan overview and process**
- **Online open house results**
- **Discussion**





# Expected growth



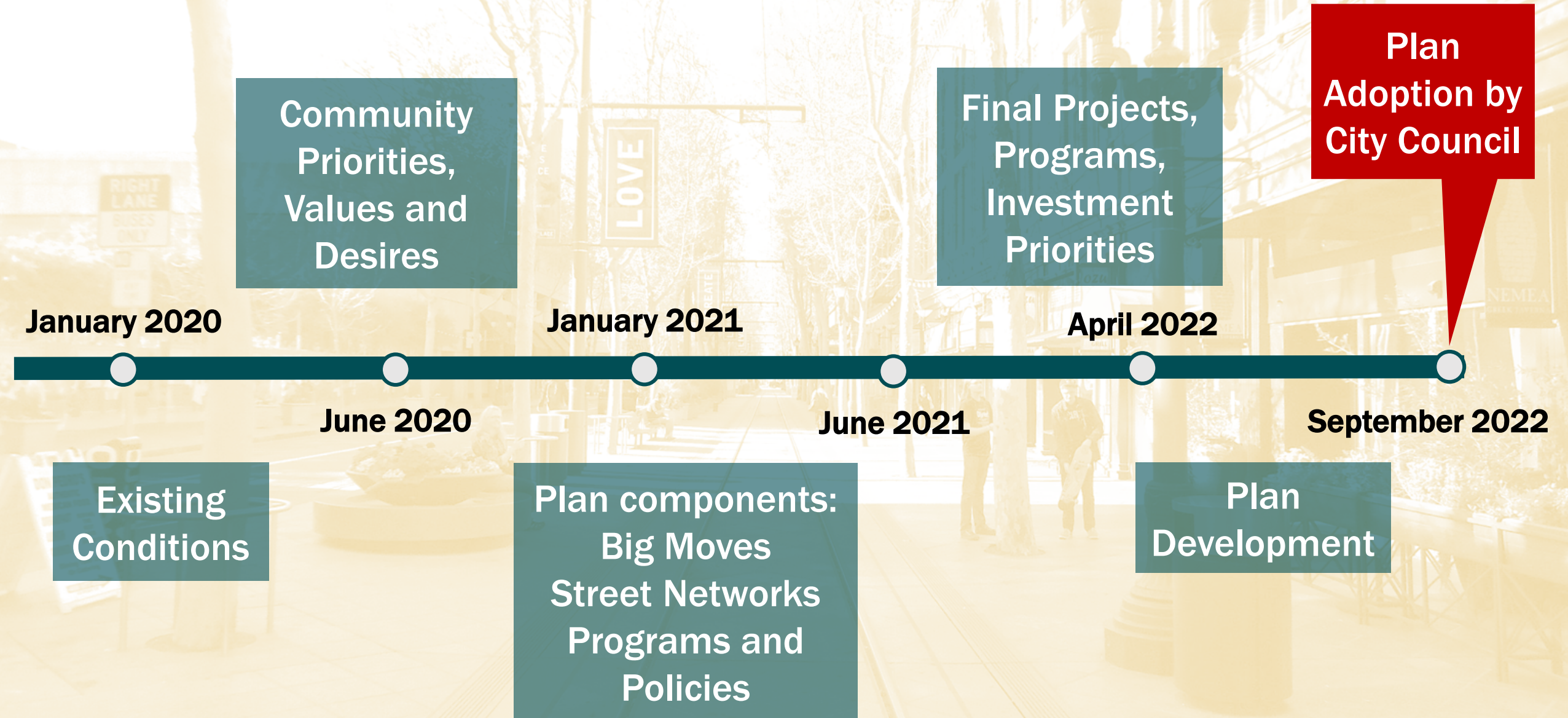
2019  
2040

- Project Boundary
- Commercial
- Downtown Mixed-Use
- Major Private Development
- Downtown Attractors





# Planning Process





# Community Engagement



- **Community Desires (Fall 2020)**

- Partnerships with community organizations
- Listening sessions (5)
- Community workshop
- Focus groups (4)
- Neighborhood/stakeholder meetings (6)
- Online survey

- **Strategies Development (2020-2021)**

- Partnerships with community organizations
- Speaker series (3)
- Neighborhood/stakeholder meetings (5)
- Online open house & survey
- Viva Calle (2)





# Online Open House (Jan-Feb 2022)

<https://www.movesanjosel.org/downtown-transportation-plan-open-house/>

## Street Networks



## Big Moves



## Guiding Principles



Welcome to the Online Open House

The logo for the San José Downtown Transportation Plan. It features the text 'SAN JOSÉ' in large, bold, dark blue letters, followed by 'DOWNTOWN TRANSPORTATION PLAN' in smaller, white, bold letters. To the right is a stylized graphic of a street grid in dark blue and yellow, with a small 'SJ' in the top right corner.

**SAN JOSÉ**  
**DOWNTOWN**  
**TRANSPORTATION PLAN**

WELCOME TO THE ONLINE OPEN HOUSE

03:13

A video player interface showing a play button, a progress bar, and a time display of 03:13. There are also icons for volume, closed captions, settings, and full screen.



# Community Desires

# Guiding Principles/ Goals

Reliable  
Transit

Santa  
Clara St

Safe  
Access

People  
First

Equity

Place

**50%**

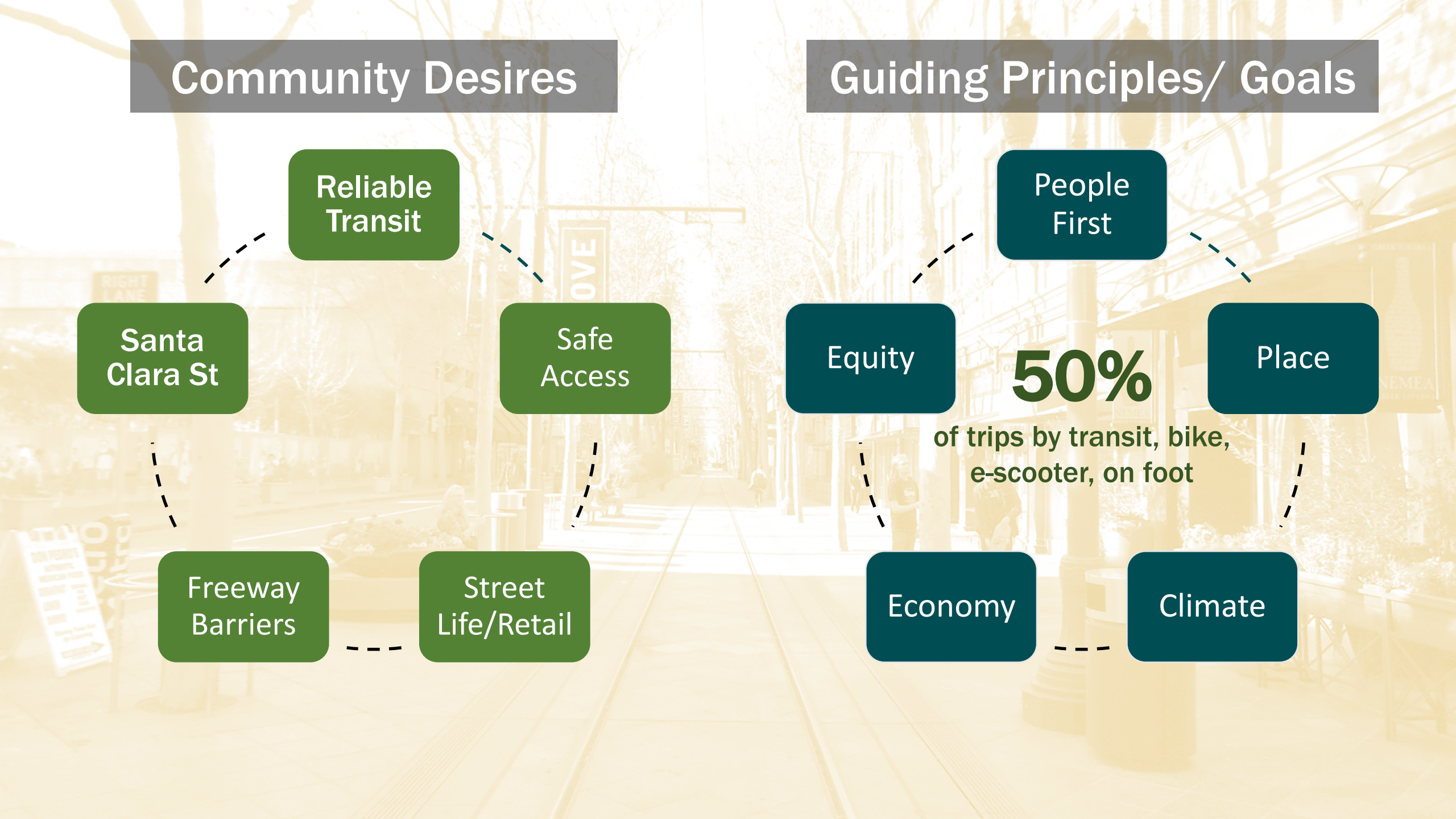
of trips by transit, bike,  
e-scooter, on foot

Freeway  
Barriers

Street  
Life/Retail

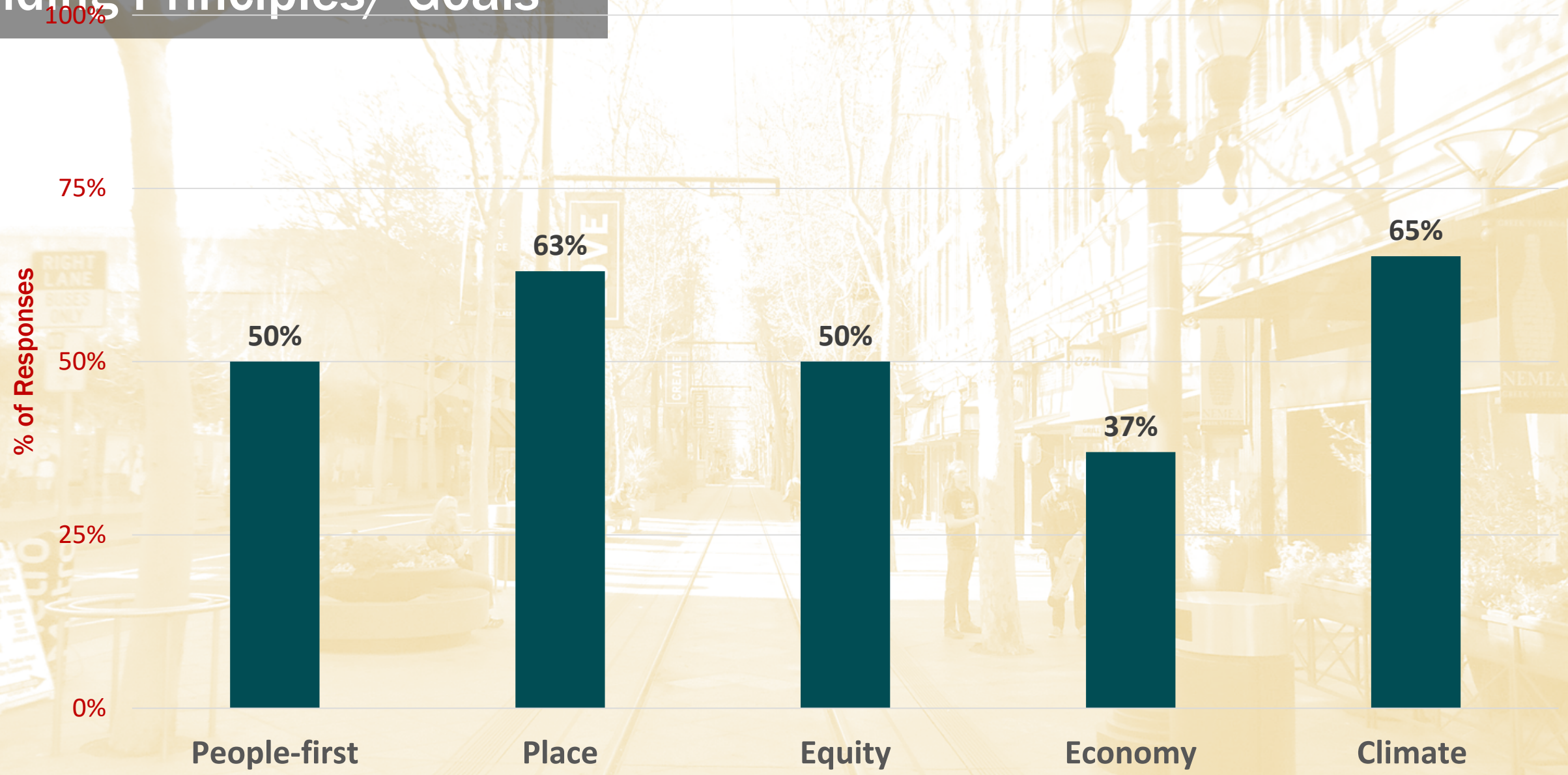
Economy

Climate





# Guiding Principles/ Goals



\*46 responses



# Plan Components

## Big Moves



Re-envisioning  
Santa Clara Street



Light Rail  
Realignment



Bike Superhighway



Bridging Freeway  
Barriers

## Street Network



Transit/ Biking/  
Walking/ Vehicle/  
Delivery



Commercial Loading

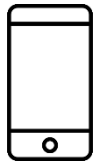


Passenger Loading/  
On-Street Parking

## Programs



Ridesharing



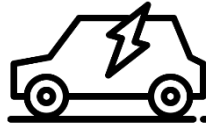
Technology



Subsidies/  
Benefits



Education/  
Marketing



Carshare/  
Electrification



Neighborhood  
Shuttle

## Policies



Parking Pricing/  
Time Restrictions



Development Review



Transit-First



# Big Move #1

## Enhancing Santa Clara Street

- Creating dedicated lanes for transit and other public services
- Significantly widening sidewalks
- Expanding outdoor space
- Converting it to a plaza-like street focusing on public life, transit access, and walking and biking, with restricted vehicle access.



# Big Move #2

## Closing Gaps in Downtown Trail Network



- Grade-separated rail corridor bikeway
- Japantown Highline: Elevated bikeway along rail tracks?





# Big Move #3

## Improving Downtown Light Rail

- Two-way light rail service on First Street?
- Grade-separated light rail through Downtown?



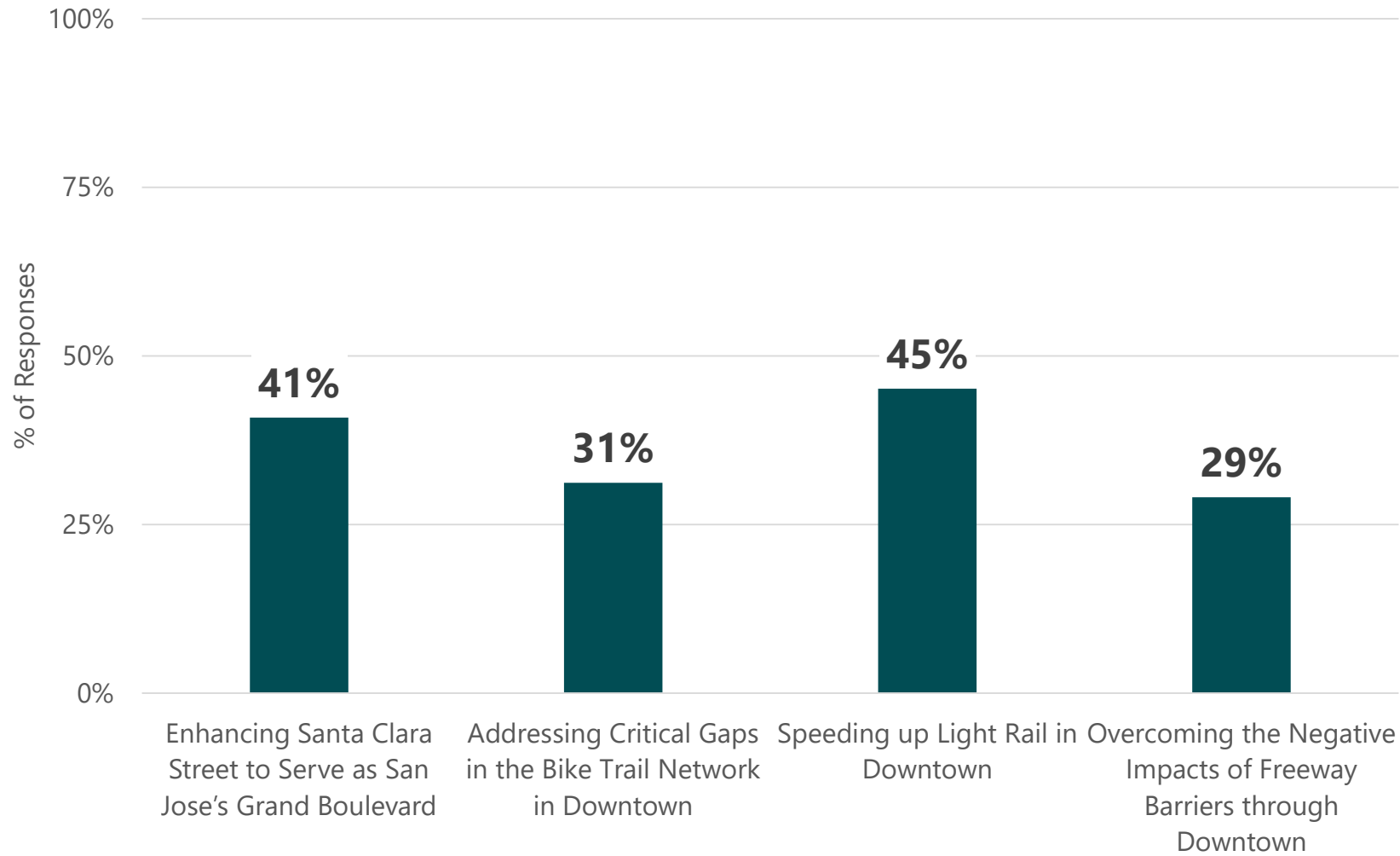


# Big Move #4 Fixing Freeway Barriers

- Consolidated freeway ramps to improve neighborhood connections?
- Urban park & plaza over I-280?
- Highway 87 urban boulevard?



# Which Big Moves to Prioritize (93 responses)



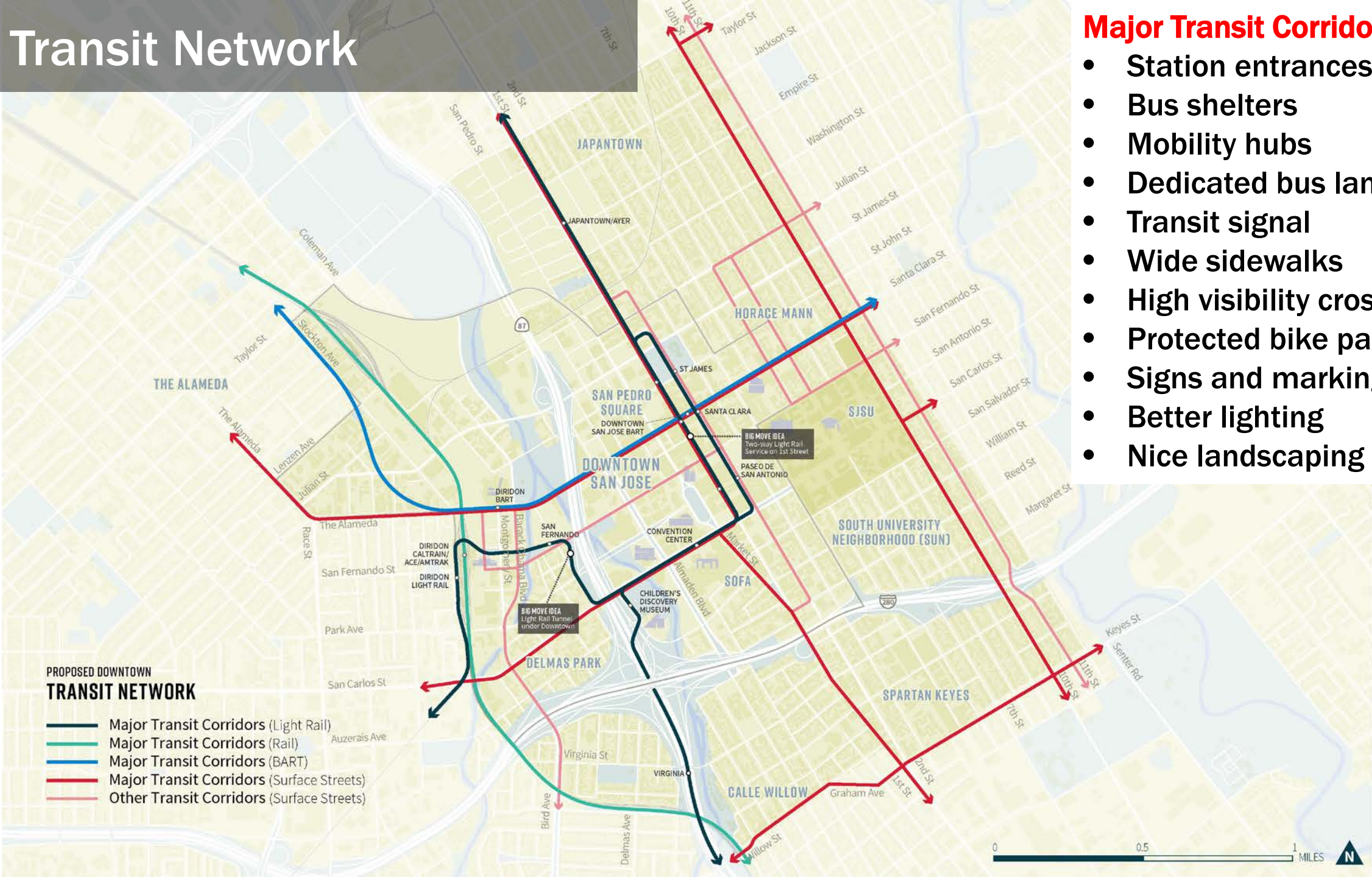
SkyCycles Proposal for London (Norman Foster and



# Transit Network

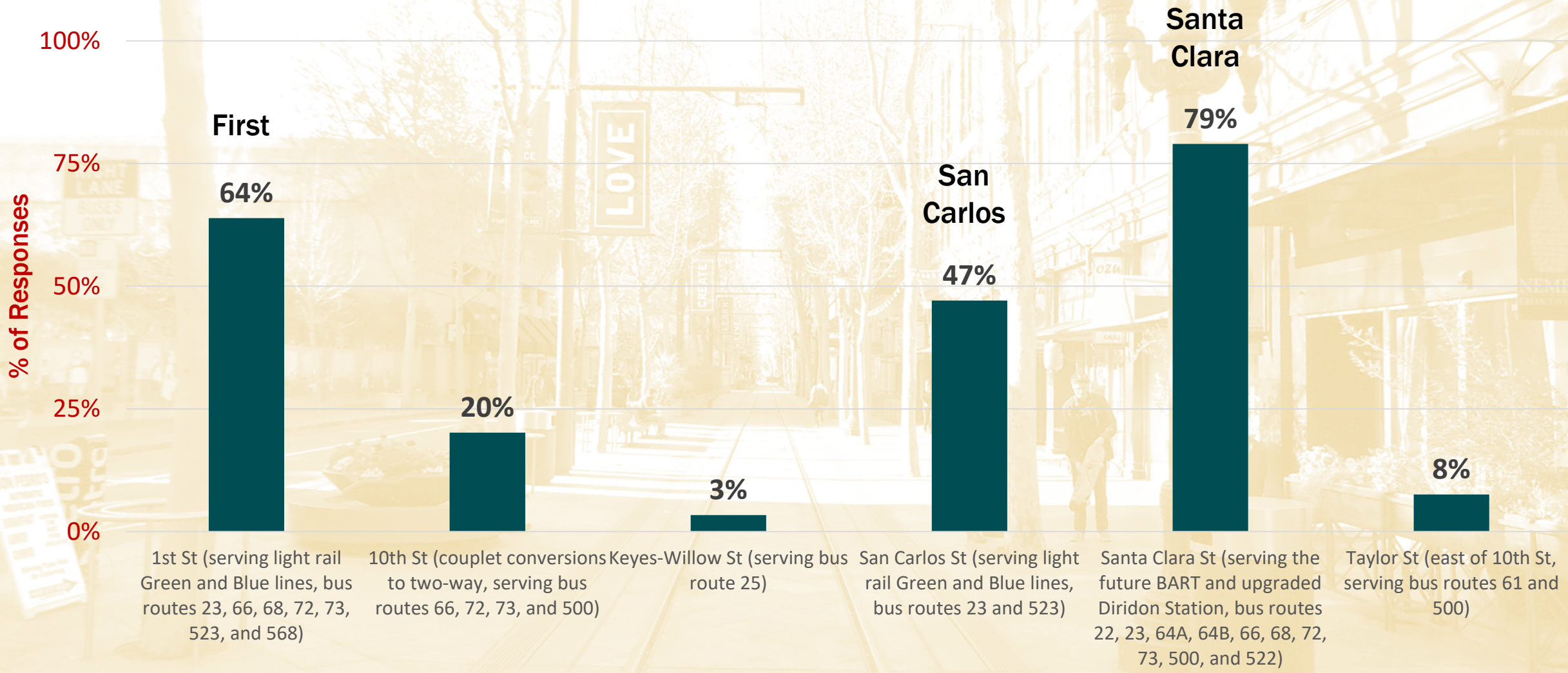
## Major Transit Corridors prioritize:

- Station entrances
- Bus shelters
- Mobility hubs
- Dedicated bus lanes
- Transit signal
- Wide sidewalks
- High visibility crosswalks
- Protected bike paths
- Signs and markings
- Better lighting
- Nice landscaping





# Most Helpful Transit Corridor



\*119 responses

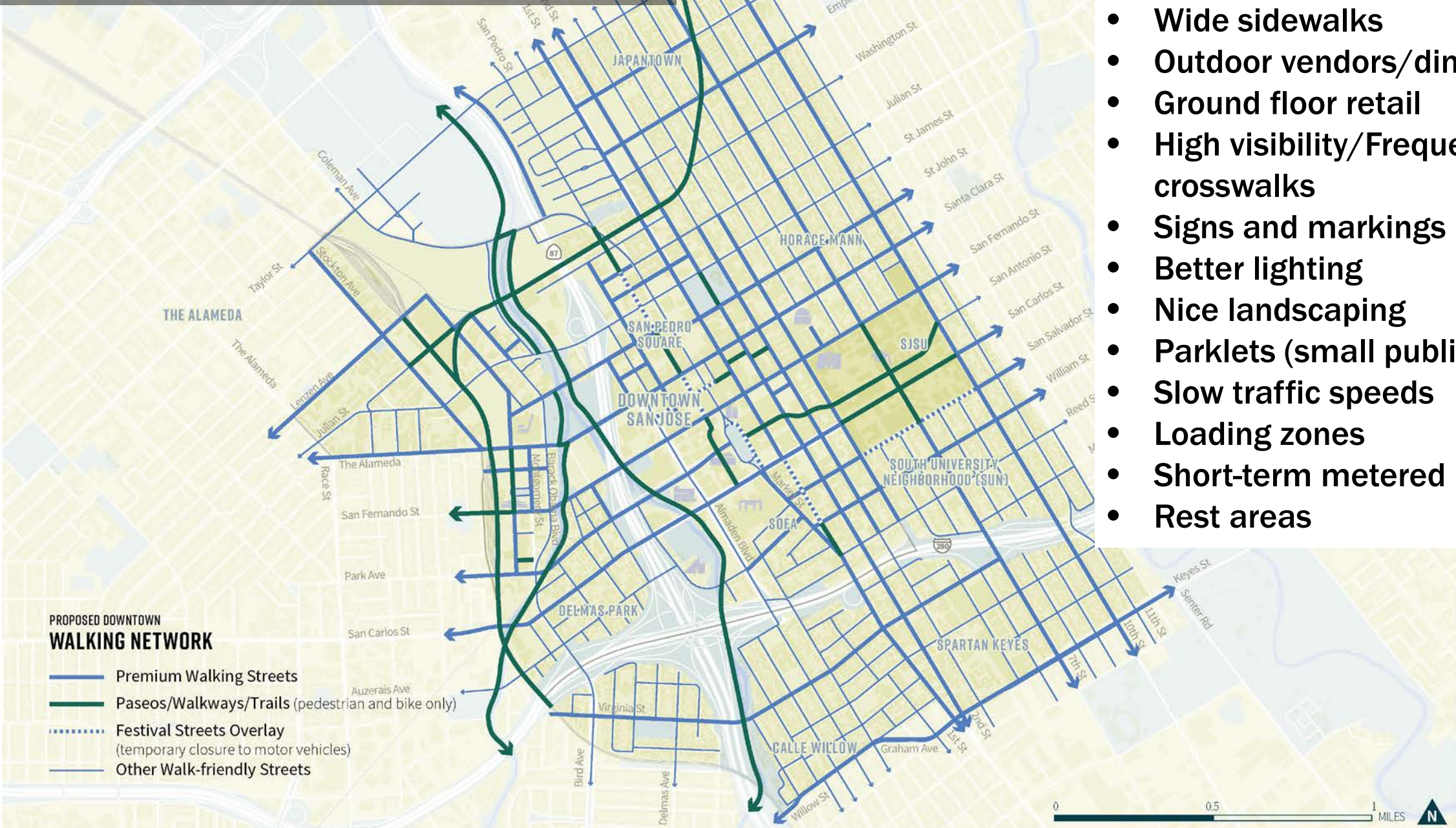


# Walking Network

## Premium Walking Corridors

prioritize:

- Wide sidewalks
- Outdoor vendors/dining
- Ground floor retail
- High visibility/Frequent crosswalks
- Signs and markings
- Better lighting
- Nice landscaping
- Parklets (small public space)
- Slow traffic speeds
- Loading zones
- Short-term metered parking
- Rest areas



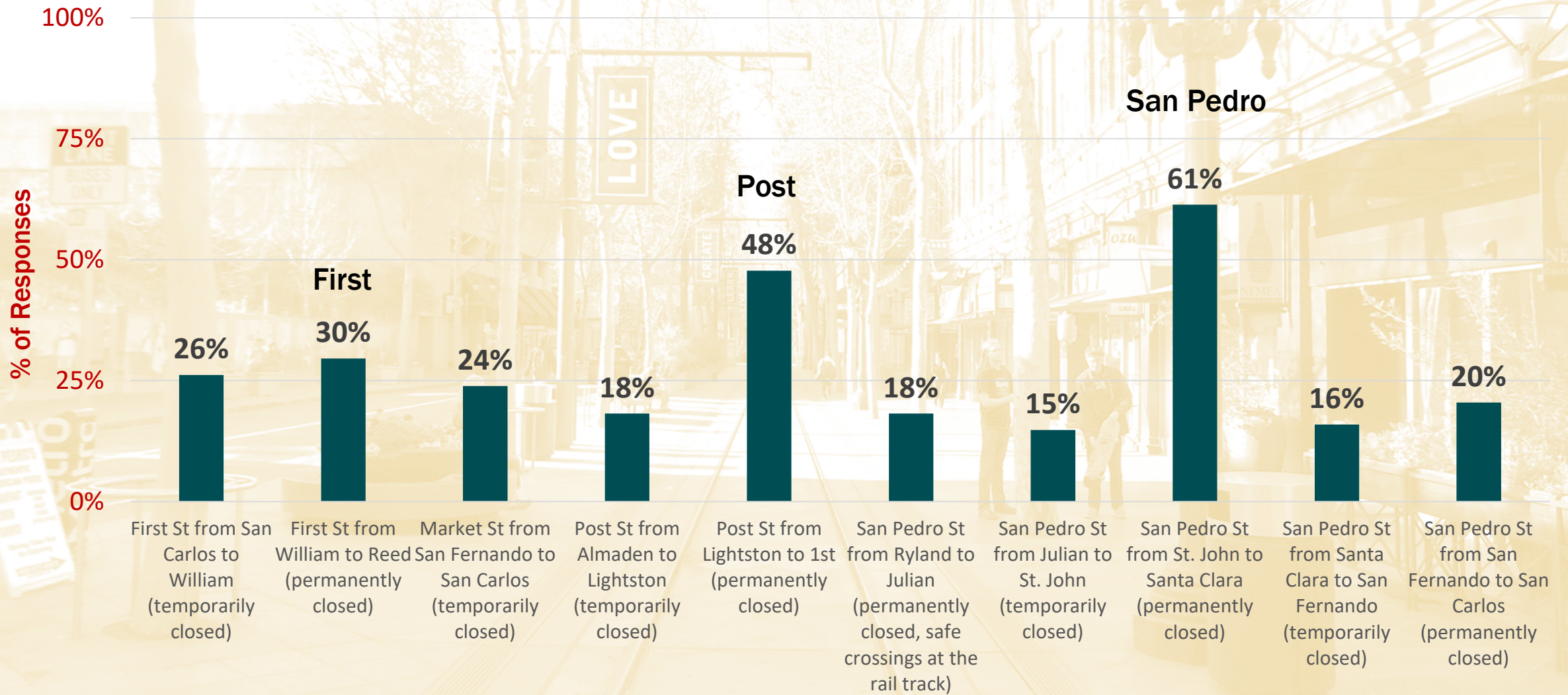
### PROPOSED DOWNTOWN WALKING NETWORK

- Premium Walking Streets
- Paseos/Walkways/Trails (pedestrian and bike only)
- ..... Festival Streets Overlay (temporary closure to motor vehicles)
- Other Walk-friendly Streets





# Streets for Walking and Public Life



\*88 responses



# Biking & Scootering Network

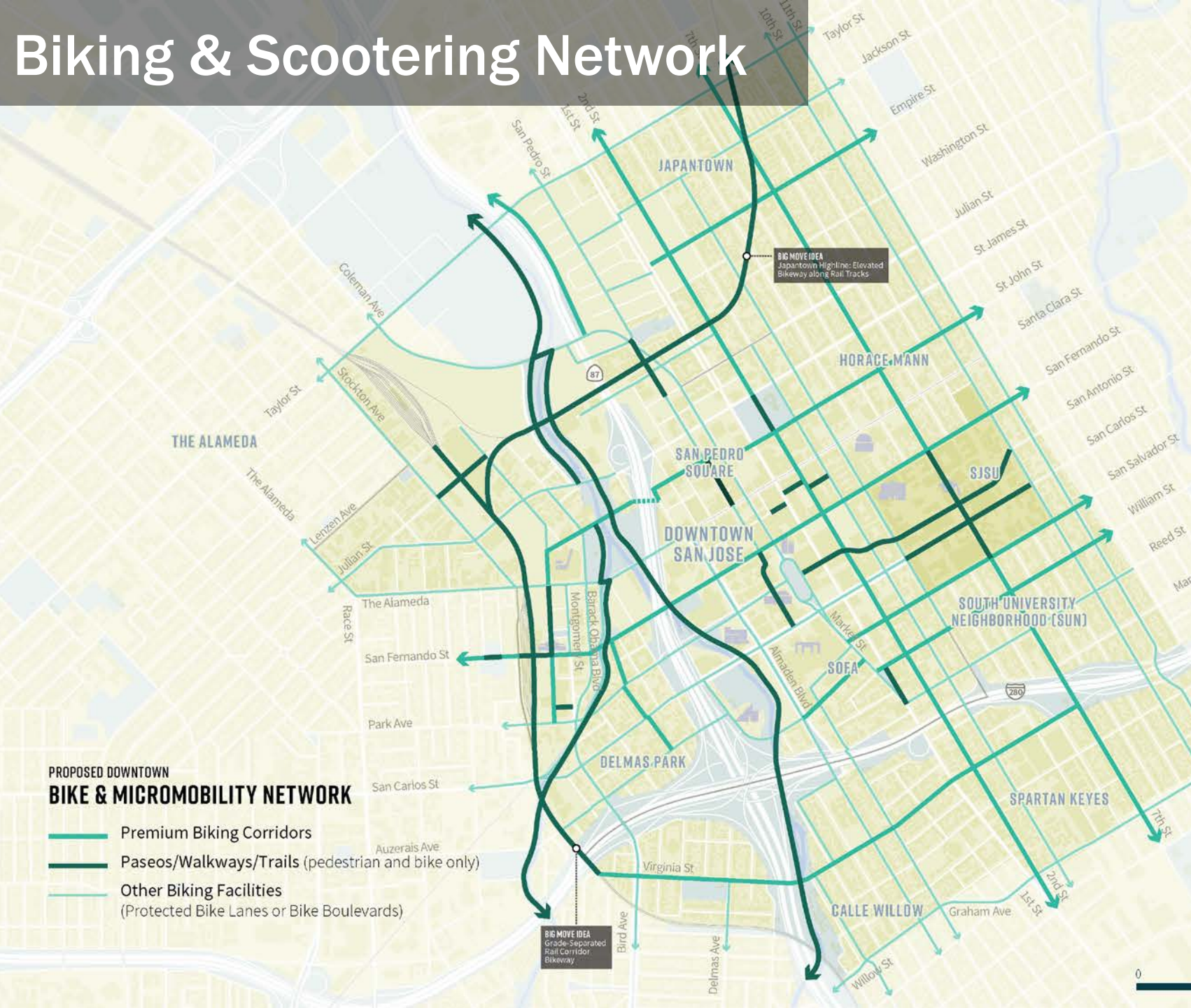
## Premium Biking Corridors

prioritize:

- Protected bike lanes/sidepaths
- Slow shared streets
- Raised bike paths
- Bikeshare stations
- Bike/scooter parking corals
- Bike lockers
- Curb extensions
- Traffic calming
- Bike signal
- Better lighting
- Signs and markings
- Nice landscaping
- Permeable pavement
- Bioswales
- Loading zones
- Short-term metered parking

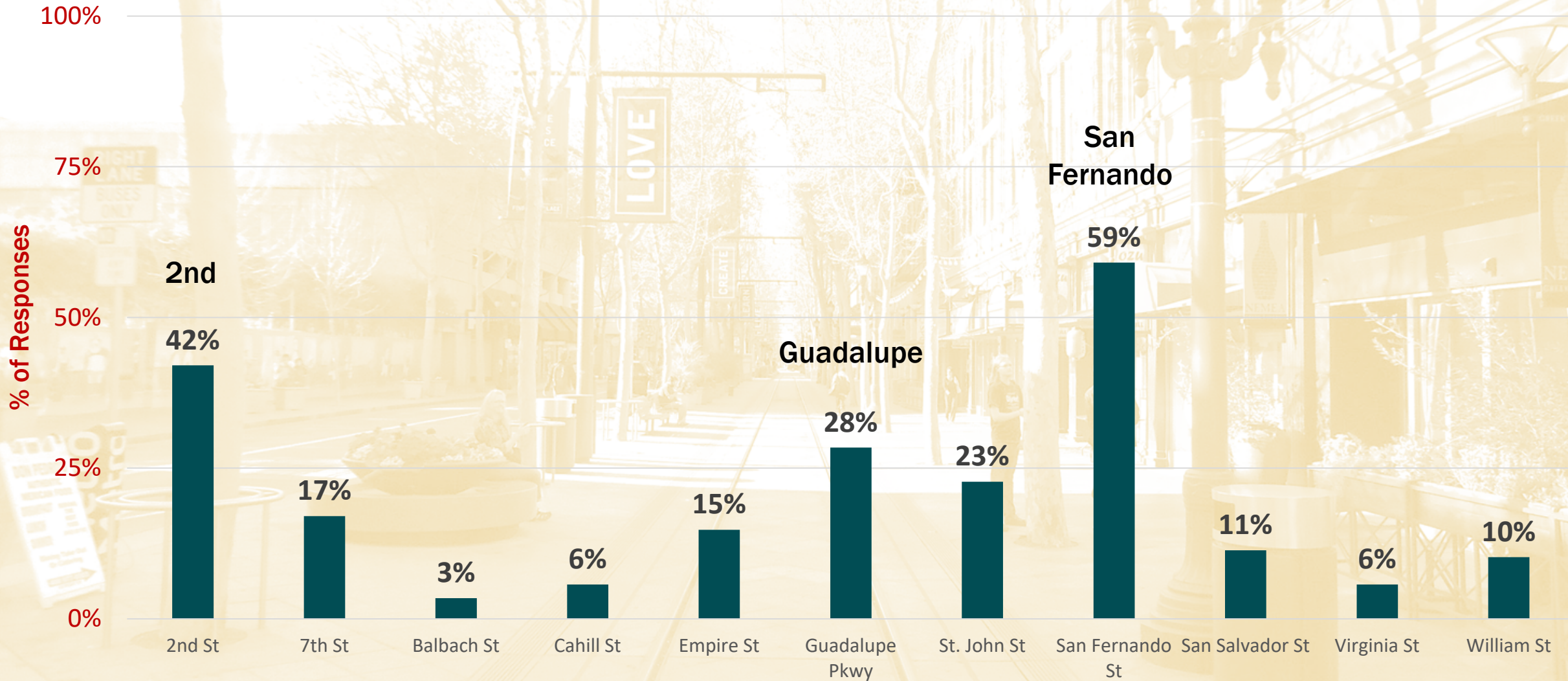
### PROPOSED DOWNTOWN BIKE & MICROMOBILITY NETWORK

-  Premium Biking Corridors
-  Paseos/Walkways/Trails (pedestrian and bike only)
-  Other Biking Facilities  
(Protected Bike Lanes or Bike Boulevards)





# Most Beneficial Biking/Scooter Corridors



\*88 responses

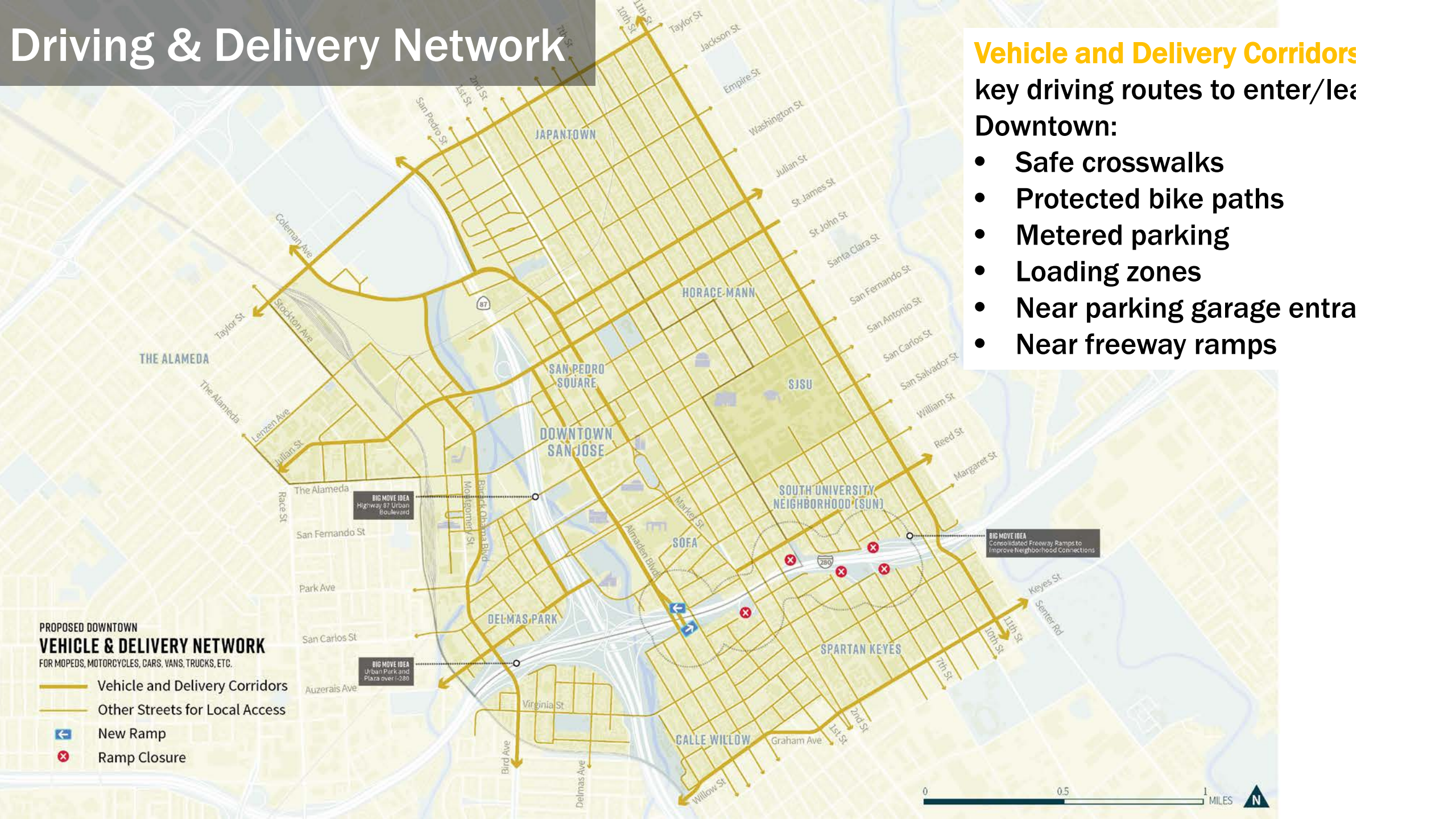


# Driving & Delivery Network

## Vehicle and Delivery Corridors

key driving routes to enter/leave Downtown:

- Safe crosswalks
- Protected bike paths
- Metered parking
- Loading zones
- Near parking garage entrances
- Near freeway ramps



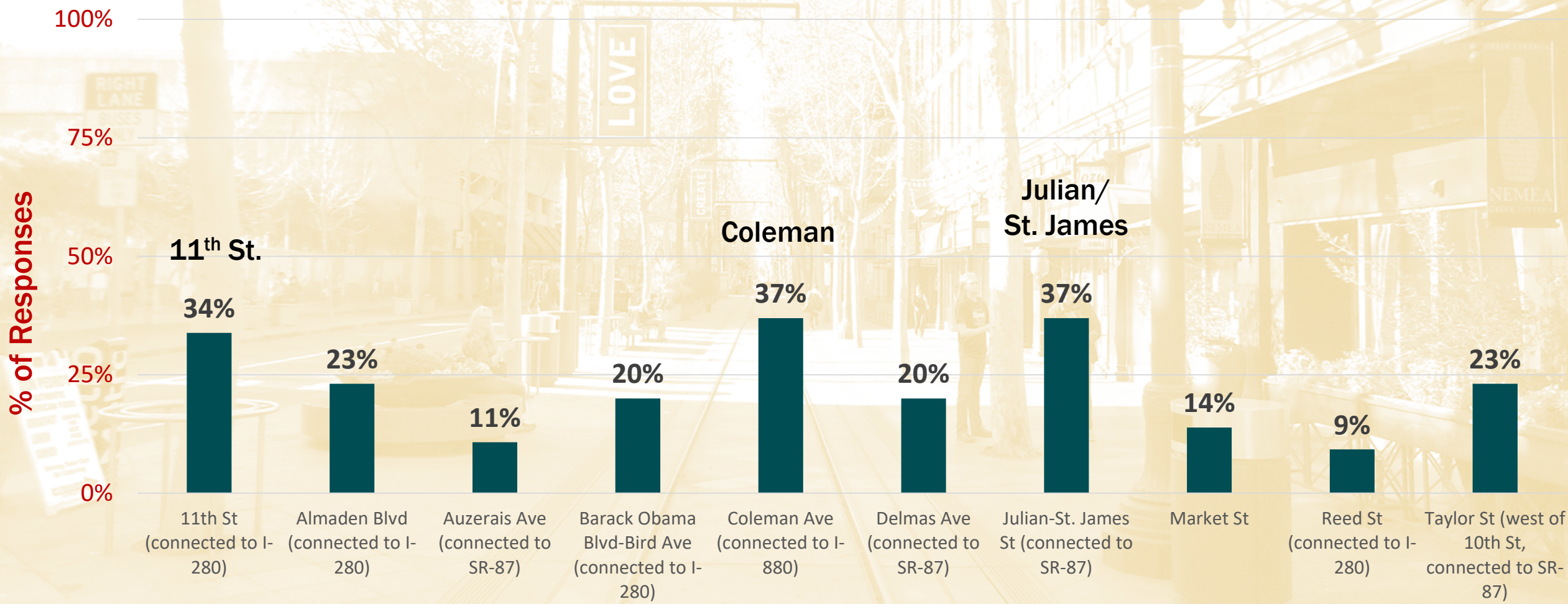
**PROPOSED DOWNTOWN  
VEHICLE & DELIVERY NETWORK**  
FOR MOPEDS, MOTORCYCLES, CARS, VANS, TRUCKS, ETC.

- Vehicle and Delivery Corridors
- Other Streets for Local Access
- ↔ New Ramp
- ⊗ Ramp Closure





# Driving & Delivery: Key Routes



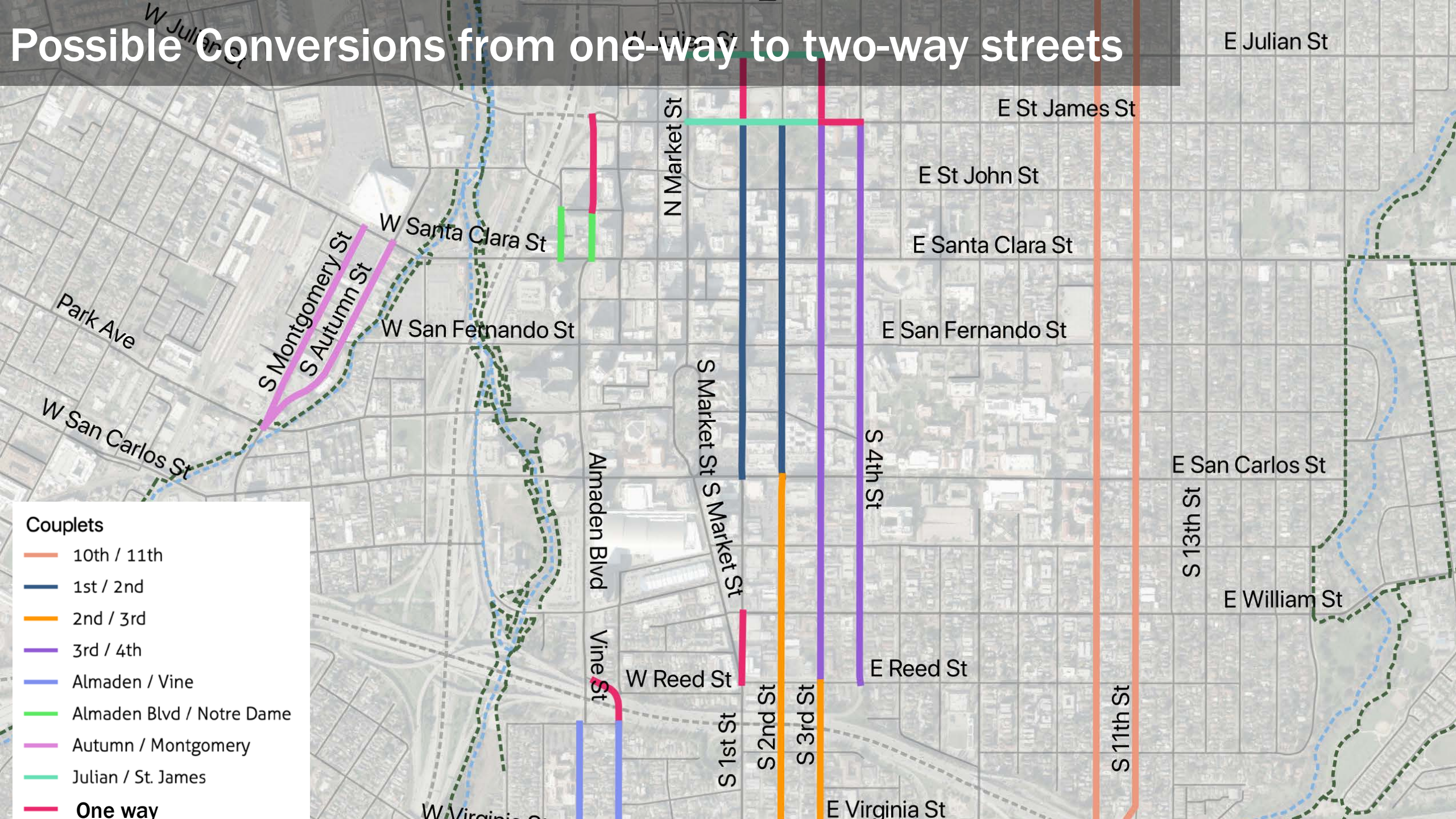
\*65 responses



# Possible Conversions from one-way to two-way streets







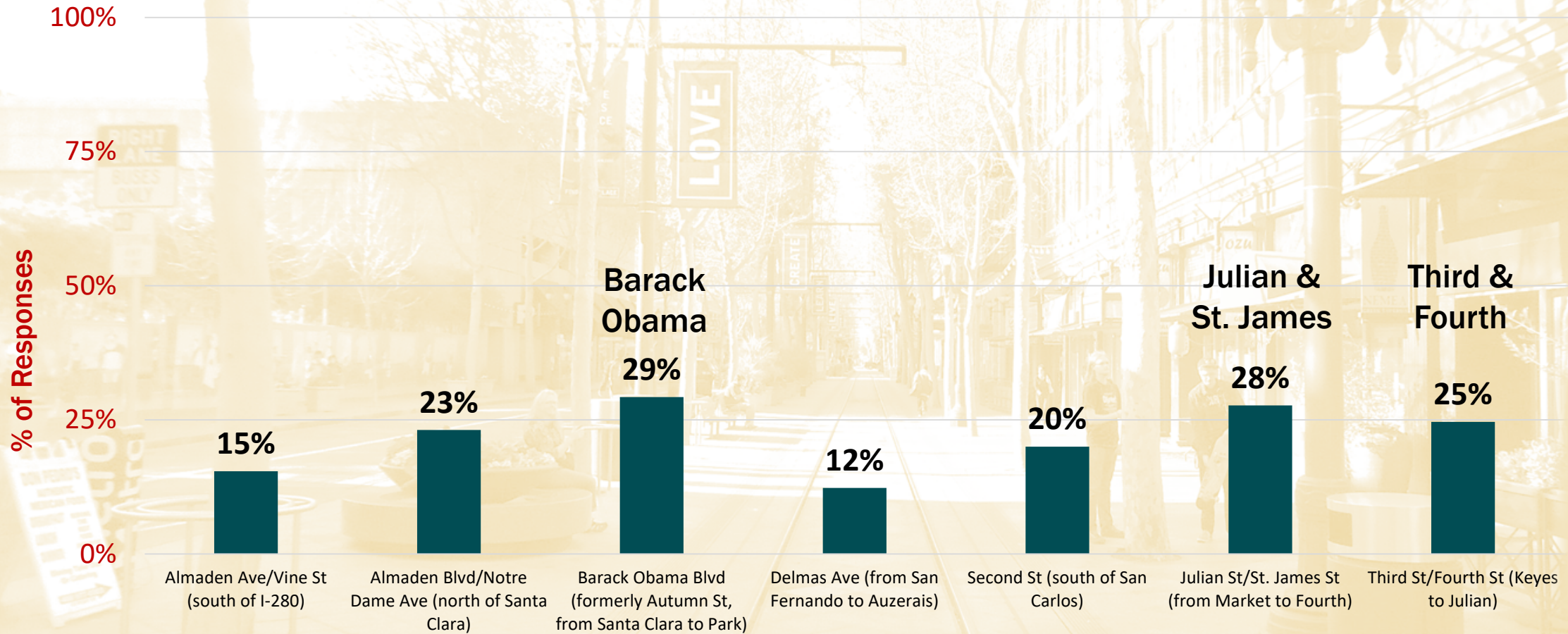
# Possible Conversions from one-way to two-way streets

- Couplets**
- 10th / 11th
  - 1st / 2nd
  - 2nd / 3rd
  - 3rd / 4th
  - Almaden / Vine
  - Almaden Blvd / Notre Dame
  - Autumn / Montgomery
  - Julian / St. James
- One way**

W Julian St  
E Julian St  
E St James St  
E St John St  
E Santa Clara St  
E San Fernando St  
E San Carlos St  
E William St  
E Virginia St  
N Market St  
S Market St  
S 1st St  
S 2nd St  
S 3rd St  
S 4th St  
S 11th St  
S 13th St  
W Santa Clara St  
W San Fernando St  
W Reed St  
W Virginia St  
Almaden Blvd  
Vine St  
S Montgomery St  
S Autumn St  
Park Ave  
W San Carlos St



# Preferred One-Way to Two-Way Street Conversions



\*65 responses



# Next Steps

- **Draft plan**

- More detailed projects, programs, policies
- Conceptual drawings for top-priority projects
- Public review (May 2022)
- Neighborhood/stakeholder meetings

- **Final plan**

- Council hearing (September 2022)

- **Post-adoption (2023-2040)**

- Design phases for streets & big moves
- Funding opportunities
- Implementation/construction phases



SJ



**D O W N T O W N  
T R A N S P O R T A T I O N P L A N**

**Thank you**

Wilson Tam and Eric Eidlin  
April 14, 2022

Source: Tomwsulcer