

Traffic Safety Enhancements Jackson Ave and SB I-680 On-Ramp Traffic Signal

Kyle Tanhueco and Katie Lewis
Department of Transportation

Community Meeting

October 26, 2022

Agenda

- Project Location and Background
- Project Overview
 - Existing conditions
 - Proposed improvements
- Estimated Timeline
- Project Benefits Summary
- Q/A

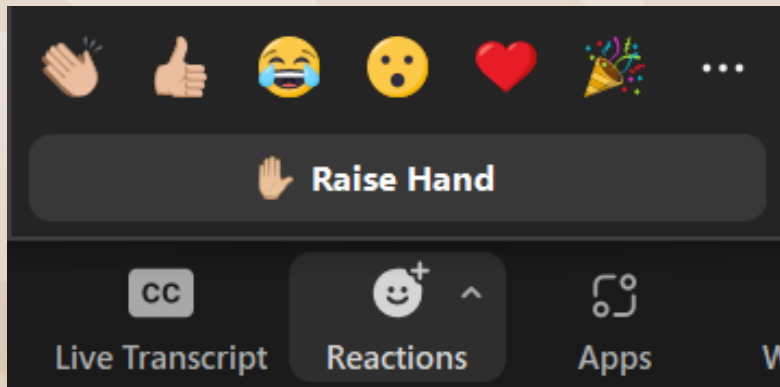
Project Background

- Jackson Avenue is one of the City's Vision Zero Priority Safety Corridors
- Review collisions trends to improve safety for pedestrians, bicyclists and vehicles
- Follow state guideline for traffic signal design and installation (CA MUTCD)
- New signal is funded at \$2.4M

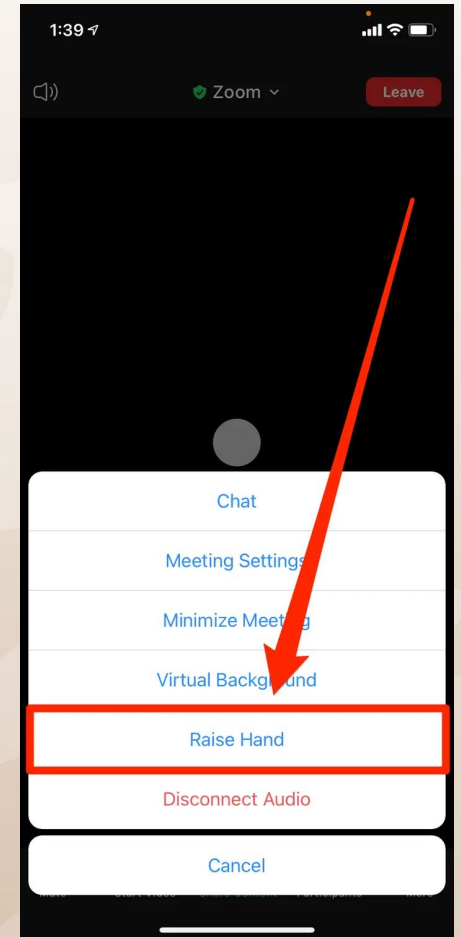
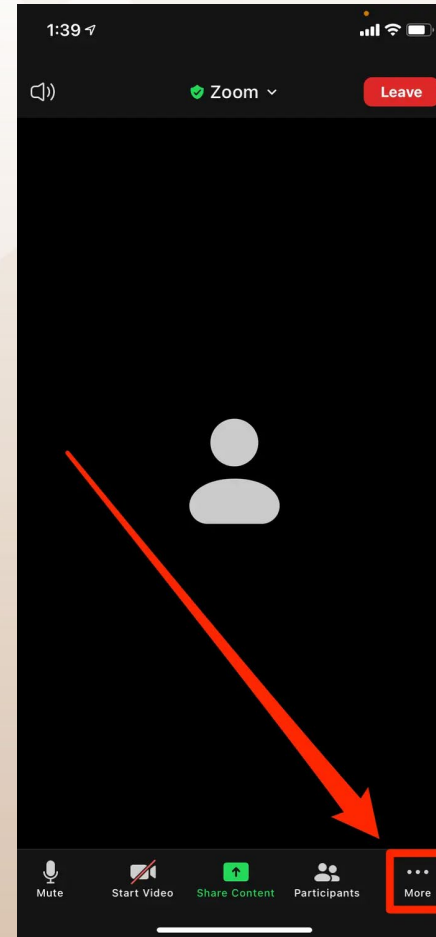


Feedback on walking/biking/driving near project location

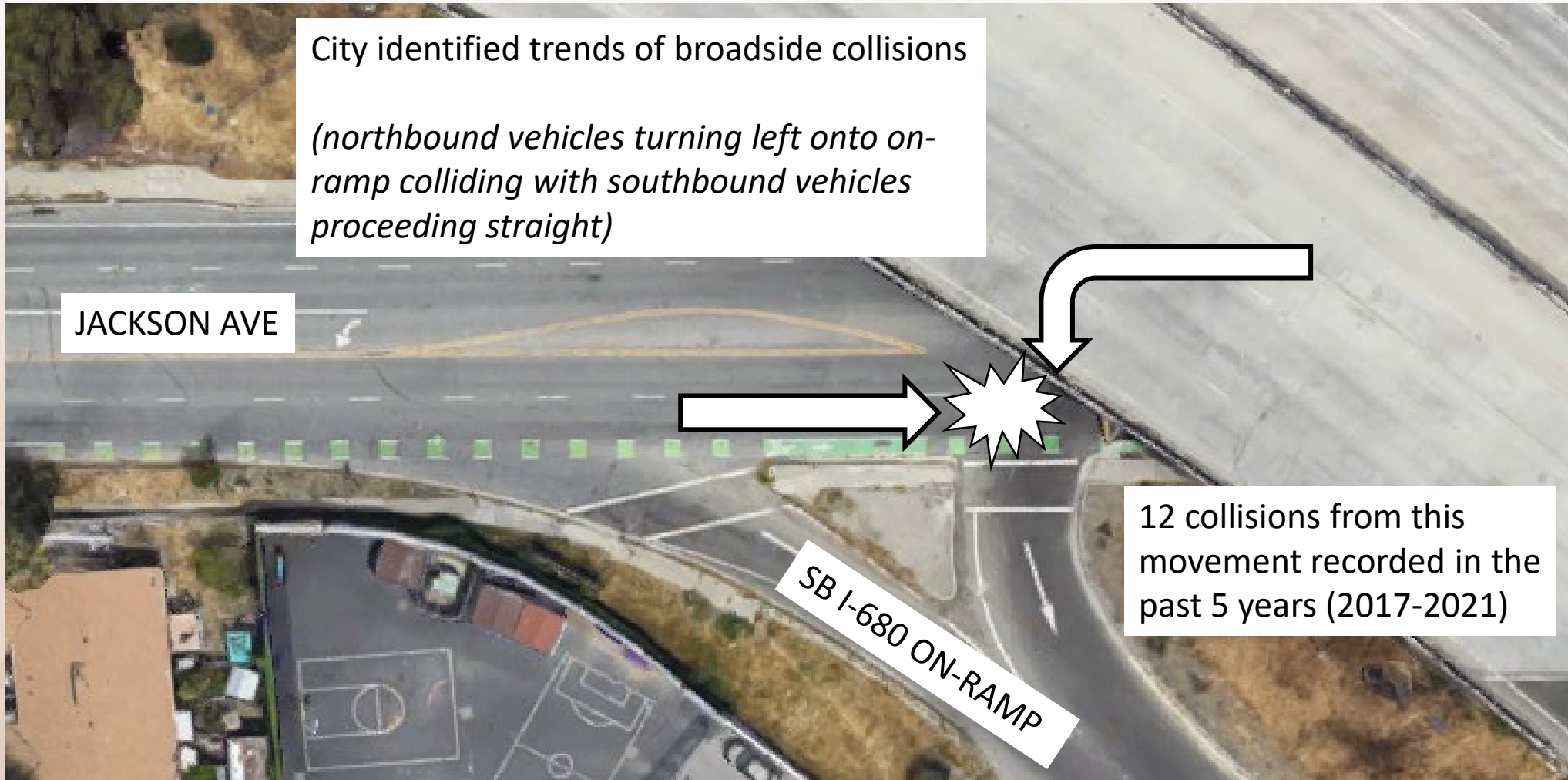
Raise hand on computer or laptop



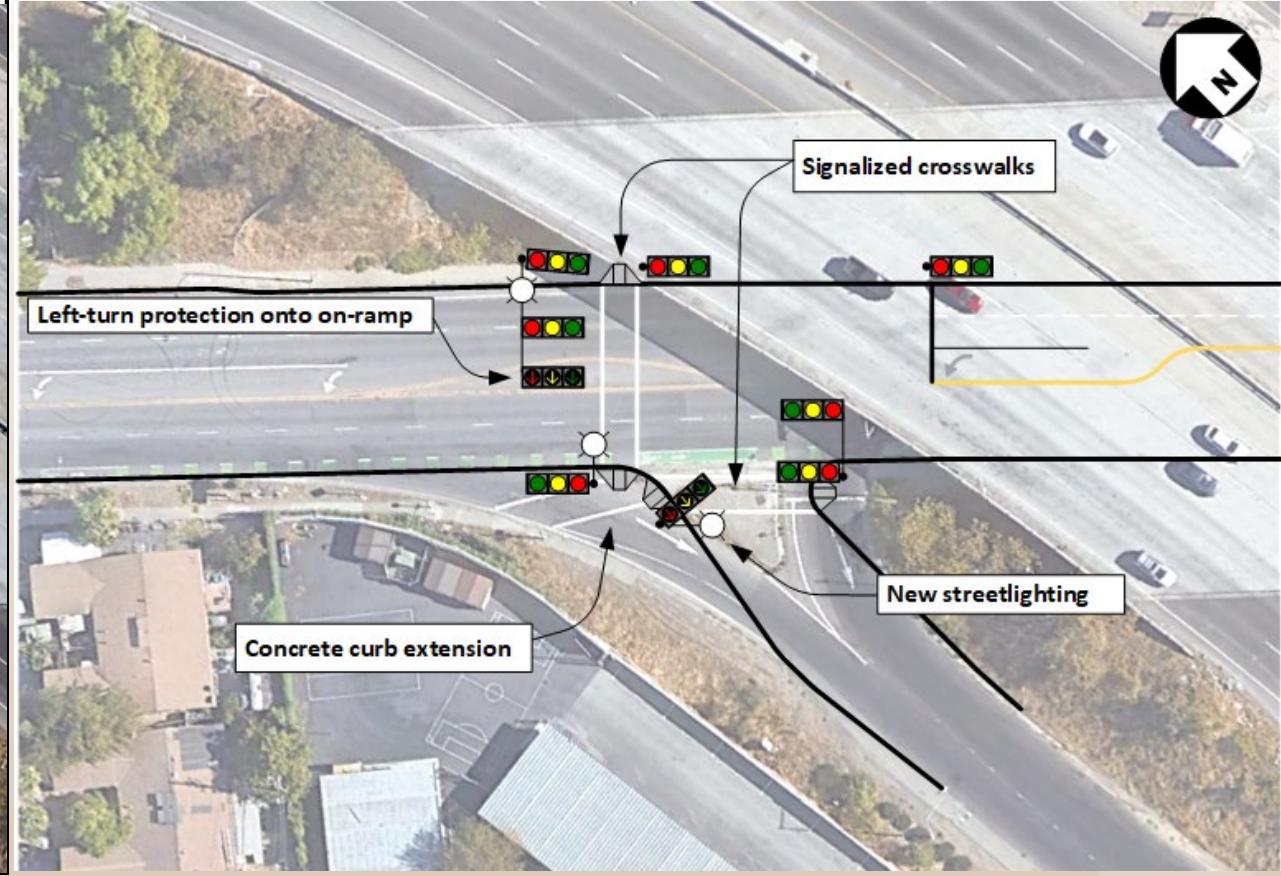
Raise hand on phone



Collision Analysis



Existing vs. Proposed

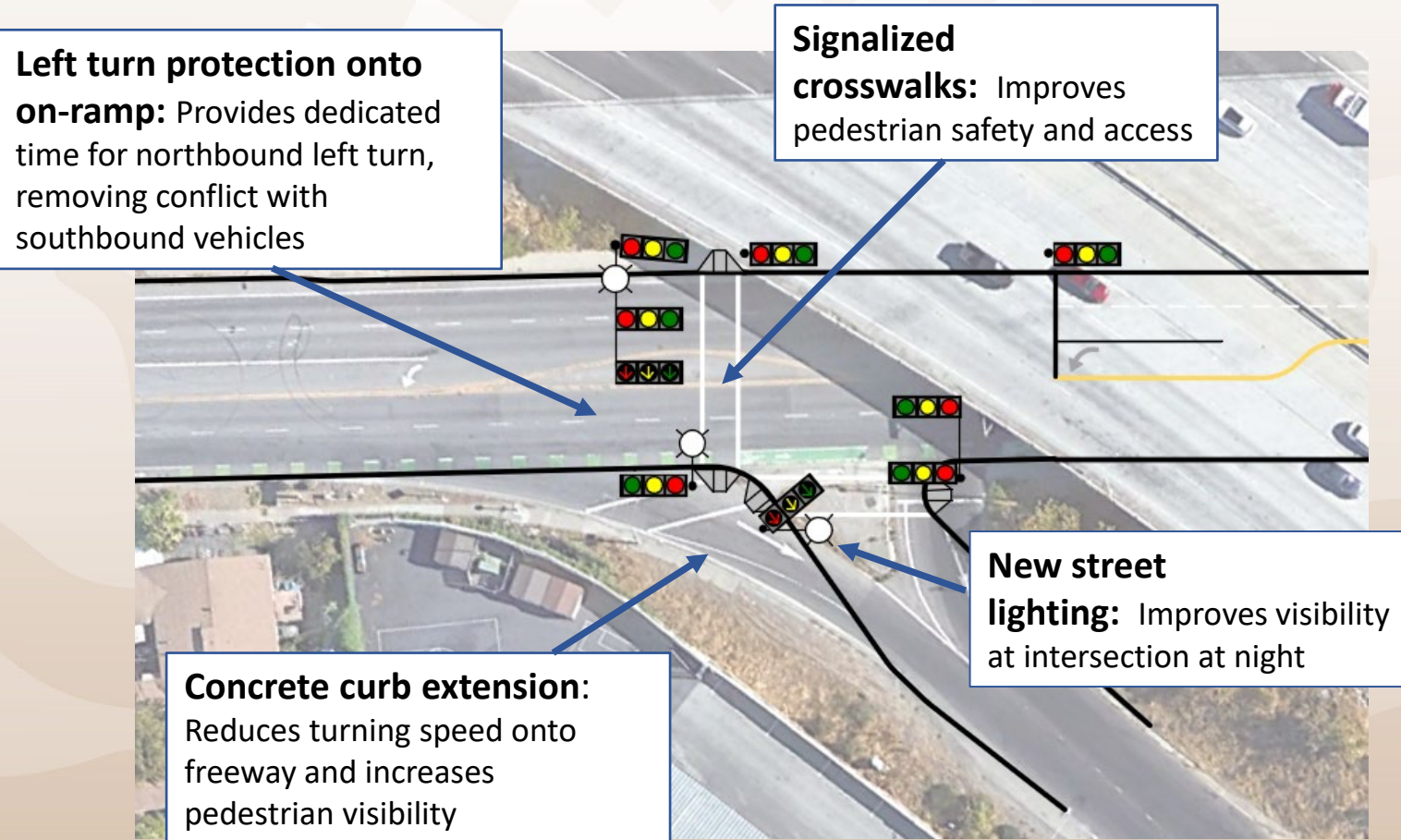


Existing vs. Proposed – Street View



Perspective traveling southbound on Jackson

Traffic Signal Features



Additional Traffic Signal Features



Yellow Retroreflective Backplates

- Improves traffic signal head visibility, particularly at night



Accessible Pedestrian Signals (APS)

- Activates crosswalk by touching or waving at device
- Audio program informs pedestrians when they are allowed to cross, and which street they are crossing



Leading Pedestrian Interval

- Allows pedestrians to begin crossing before vehicles are given the green light
- Makes pedestrians more visible to vehicles

Benefits Summary

Project Goals	Traffic Signal Features
Improve bike and pedestrian safety by slowing southbound right turn movements	<ul style="list-style-type: none">• Removal of existing concrete island• Extension of curb
Improve pedestrian safety and accessibility	<ul style="list-style-type: none">• Signalized crosswalks with leading pedestrian intervals• New ADA ramps and Accessible Pedestrian Signals
Improve vehicle safety and reduce broadside collisions	<ul style="list-style-type: none">• Dedicated phase for northbound left turn onto I-680 on-ramp
Improve visibility at night for all roadway users	<ul style="list-style-type: none">• Additional streetlights• Traffic signal heads with high-visibility backplates

Estimated Project Timeline



Note: these are projected timelines and subject to change

For more information or to provide feedback:

Contact Anna Le at: Anna.Le@sanjoseca.gov or (408)535-7985

For project information:

Visit our webpage at: <https://bit.ly/680-jackson>



QR Code for more info

Q&A

Thank You!