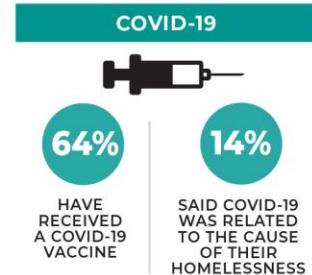
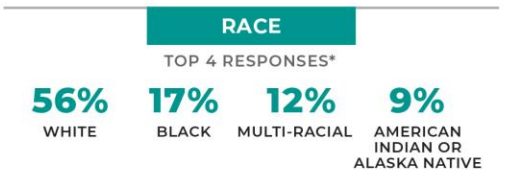
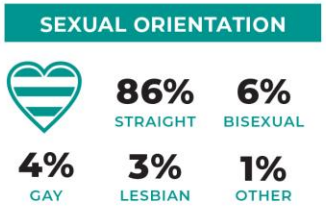
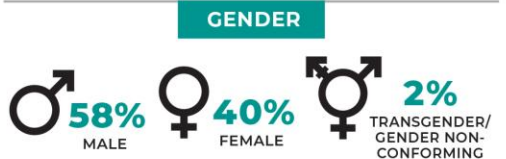
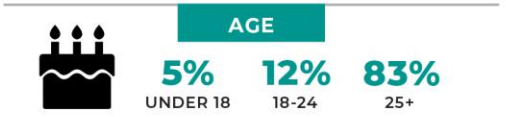
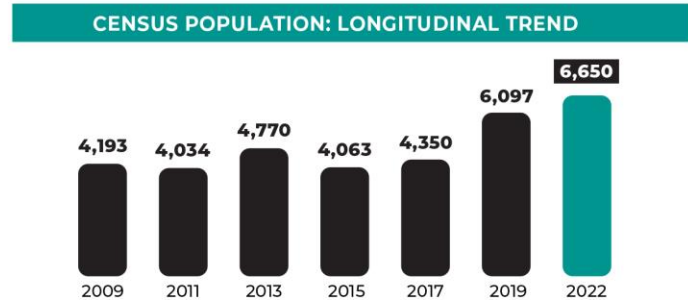


# CITY OF SAN JOSE

## 2022 HOMELESS POINT-IN-TIME COUNT & SURVEY

Every two years, typically during the last 10 days of January, communities across the country conduct comprehensive counts of the local homeless populations in order to measure the prevalence of homelessness in each local Continuum of Care.

The 2022 City of San José Point-in-Time Count was a community-wide effort conducted on February 23rd and 24th, 2022. In the weeks following the street count, a survey was administered to 549 unsheltered and sheltered individuals experiencing homelessness, in order to profile their experience and characteristics.



### AGE AT FIRST EXPERIENCE OF HOMELESSNESS



### FIRST EPISODE OF HOMELESSNESS



### DURATION OF CURRENT EPISODE OF HOMELESSNESS



### INTEREST IN PERMANENT HOUSING

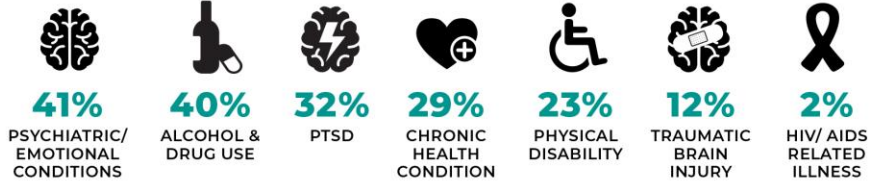


### BARRIERS TO PERMANENT HOUSING+



### SELF REPORTED HEALTH+

Current health conditions that may affect the housing stability or employment of those experiencing homelessness.

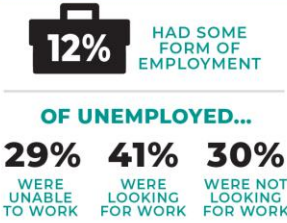


### DISABLING CONDITIONS

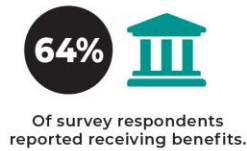


A disabling condition is defined by HUD as a developmental disability, HIV/AIDS, or a long-term physical or mental impairment that impacts a person's ability to live independently but could be improved with stable housing.

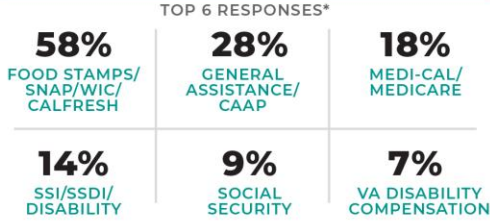
### EMPLOYMENT STATUS



### SERVICES AND ASSISTANCE



### SERVICES CURRENTLY ACCESSING+



### △ SUBPOPULATION DEFINITIONS

**CHRONICALLY HOMELESS**  
An individual with one or more disabling conditions or a family with a head of household with a disabling condition who:  
» Has been continuously homeless for 1 year or more and/or;  
» Has experienced 4 or more episodes of homelessness within the past 3 years.

**VETERANS**  
Persons who have served on active duty in the Armed Forces of the United States. This does not include inactive military reserves or the National Guard unless the person was called up to active duty.

**FAMILIES**  
A household with at least one adult member (persons 18 or older) and at least one child member (persons under 18).

**UNACCOMPANIED YOUTH & YOUNG ADULTS**  
Youth under the age of 18 and young adults between the ages of 18 and 24 years old (TAY) who are experiencing homelessness and living without a parent or legal guardian.

+ Multiple response question, results may not add up to 100%.  
\* Only displaying top responses, all response data will be available in full report.  
Note: Some percentages have been rounded so total percentage will equal 100%.

The complete comprehensive report includes a more detailed profile of the characteristics of those experiencing homelessness in the City of San José. It will be available in late summer 2022.  
Source: Applied Survey Research, 2019, Santa Clara County Homeless Census & Survey, Watsonville, CA.