





LEVITT PAVILION

It was playwright and poet Johann Wolfgang Von Goethe that said, “Music is liquid architecture; Architecture is frozen music.” The design of the pavilion took its inspiration from music and performance. Three flowing melodies or scenes run together to form a dramatic central crescendo, then fade away. Wrapping the periphery of The Lawn, suspended pyramids of overlapping translucent panels give the pavilion structures a sense of dynamism and buoyancy. These sculptural panels give form to the inner rhythms and flows of the city and park, and form a cadence with the geometries of the surrounding neighborhood, landscape, and planting.

Inspiration also came from San Jose’s Moon Tower urban lighting structure constructed in 1881 on a neighboring downtown site (at the intersection Santa Clara and Market Streets), and the notion of embracing “urban lighting” became critical to our conception of the pavilion design. Lastly, the pavilion was inspired by the Victorian-era origins of the park and other open glass and iron structures, like the Crystal Palace from 1851. Taken together, these inspirations form a compelling range of associations and narratives.

NEIGHBORHOOD PAVILION: A STAGE FOR THE CITY

First and foremost the Levitt Pavilion will be a welcoming place of leisure and recreation for the neighborhood to enjoy. During the day, the pavilion creates a neighborhood place - a cool shaded colonnade for strolling, an open urban stage for casual gatherings, a generous lawn for Frisbee, seating for neighbors to meet and chat. In the evening, the pavilion is a striking illuminated feature and a place to host a neighborhood event or barbecue, enjoy a coffee with a friend. It performs more like a hub with shade canopies and can support programs that make it an attractive place to walk through and visit during the week and on weekends; a safe, meeting place for the neighborhood. The central pavilion also provides flexible open space that accommodates multiple informal programs like yoga, exercise meetups, dance recitals, poetry readings, and small ceremonies.



Sinuous illuminated colonnades are designed to encourage visitors to meander and relax in the evening.



The pavilion, during daytime, is a social and recreational hub for a range of activities.



Pavilion Colonnade: shade canopies wrap around The Lawn adjacent to the cafe.

THE LEVITT PAVILION SAN JOSE: CONCERT IN THE PARK

The Levitt Pavilion will be able to quickly transform from park structure into an extraordinary venue for outdoor music and performance; an iconic sculptural structure with undulating shade canopy wings. The design creates an intimate “concert in the park” venue with trees and dense plantings serving as the primary backdrop.

The pavilion has dramatic lighting and a cutting-edge focused sound system that transforms the space into a performance venue of the highest quality. The stage and surrounding canopy arms each house fixed sound and lighting elements that facilitate a rapid and scalable setup for a range of activities, from solo acoustic sets to more complex musical ensembles. The generous open stage will accommodate many performance types from operas, symphonies, and large bands to solo musicians. The Lawn creates a flexible space for visitors to spread out a blanket and sit directly in front of the performers to enjoy the show or stroll along the edges under the canopy wings. The Lawn readily accommodates audiences of 5000 people.



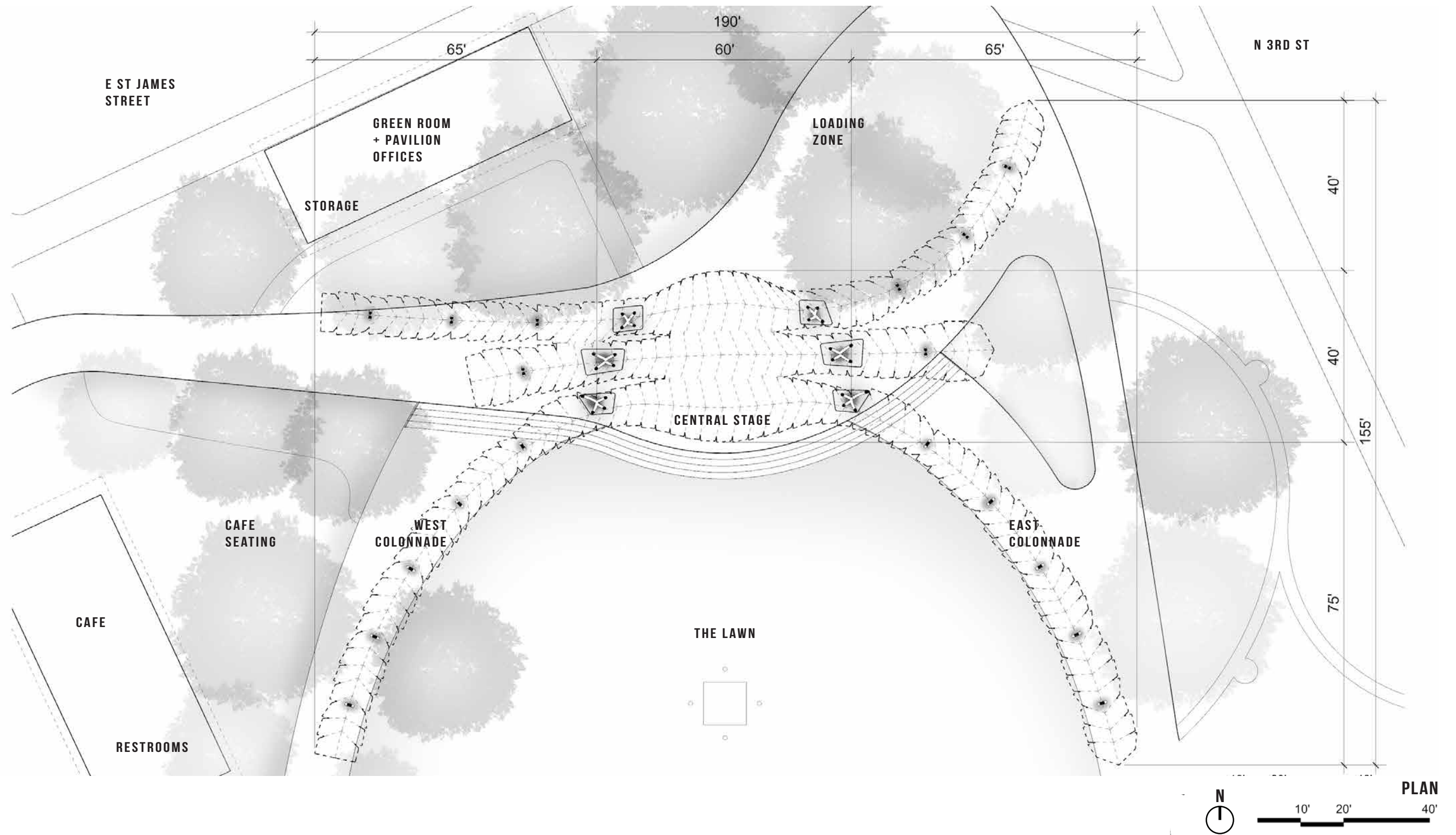
The Pavilion fits seamlessly into the new St. James Park network of pathways and lawns.

The Pavilion would also support programs like open air cinema and performances.

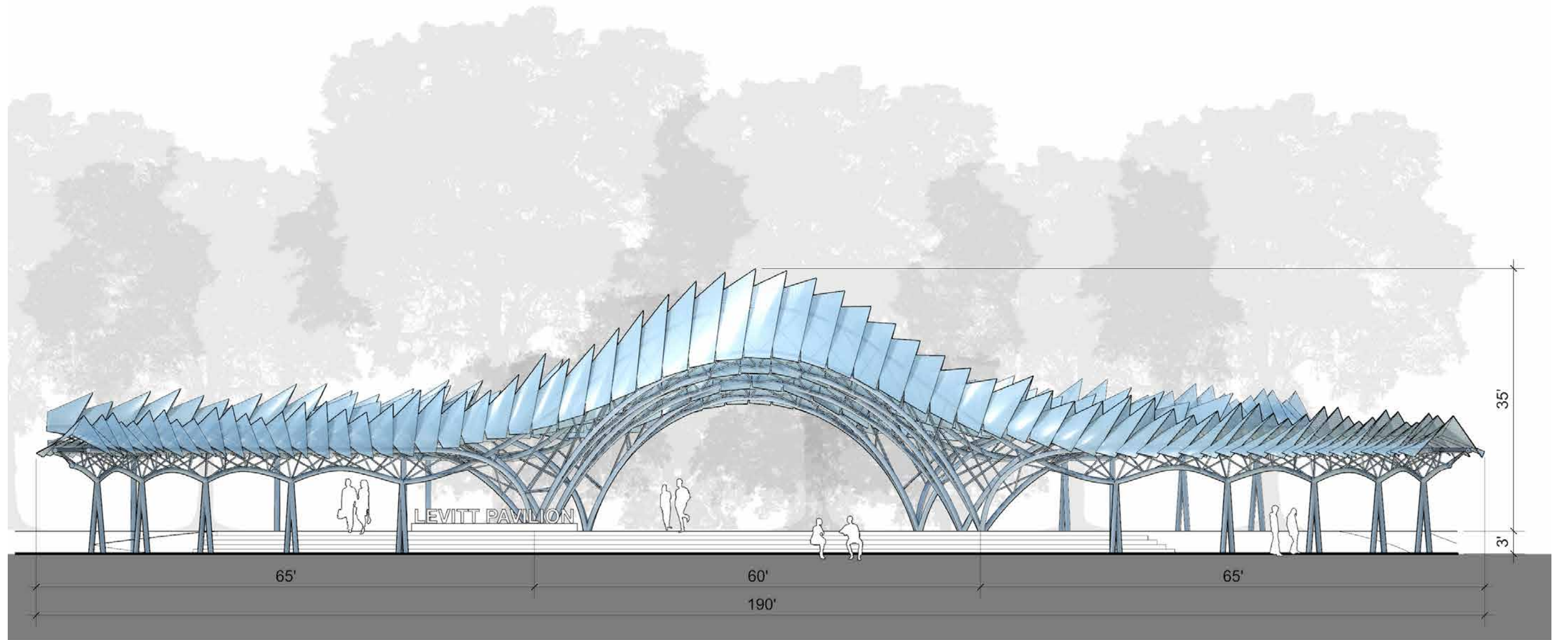


The Levitt Pavilion San Jose: a cutting-edge concert venue and dramatic urban backdrop

PAVILION: PLAN



PAVILION: ELEVATION



WEST COLONNADE

CENTRAL STAGE

EAST COLONNADE

ELEVATION

